

LAMP2 Rabbit mAb

Catalog No: #48611

Package Size: #48611-1 50ul #48611-2 100ul

Orders: order@signalwayantibody.comSupport: tech@signalwayantibody.com

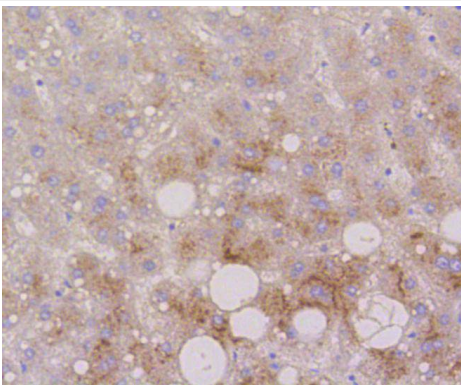
Description

Product Name	LAMP2 Rabbit mAb
Host Species	Recombinant Rabbit
Clonality	Monoclonal antibody
Clone No.	SA46-01
Purification	ProA affinity purified
Applications	WB IHC ICC/IF
Species Reactivity	Human;Mouse;Rat
Immunogen Description	recombinant protein
Conjugates	Unconjugated
Other Names	CD107 antigen-like family member B antibody CD107b antibody LAMP 2 antibody Lamp 2a antibody LAMP-2 antibody LAMP2 antibody LAMP2_HUMAN antibody Lysosome-associated membrane glycoprotein 2 antibody Lysosome-associated membrane protein 2 antibody
Accession No.	Swiss-Prot#:P13473
Calculated MW	45 kDa
SDS-PAGE MW	110 kDa
Formulation	1*TBS (pH7.4), 1%BSA, 40%Glycerol. Preservative: 0.05% Sodium Azide.
Storage	Store at -20°C

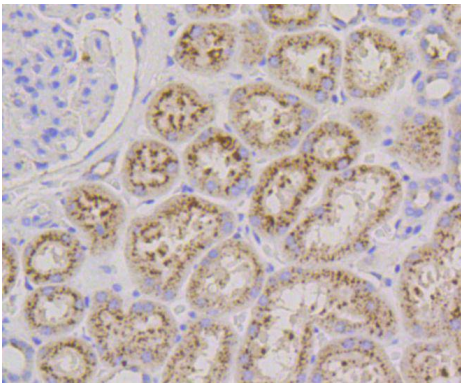
Application Details

WB: 1:1,000-5,000 IHC: 1:50-1:200

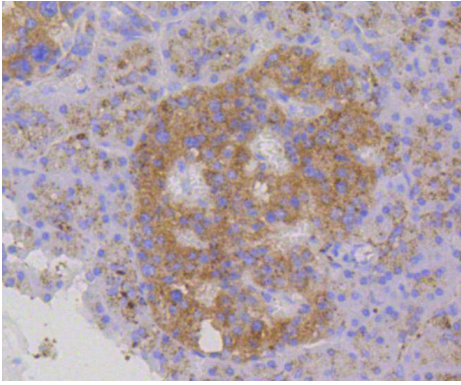
Images



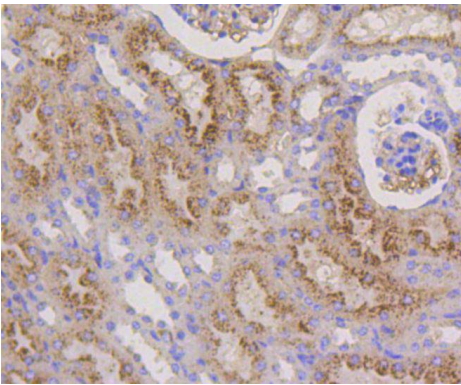
Immunohistochemical analysis of paraffin-embedded human liver tissue using anti-LAMP2a antibody. Counter stained with hematoxylin.



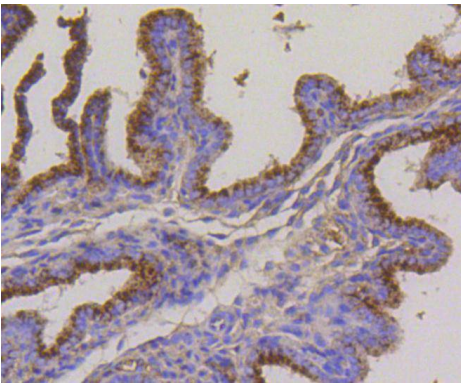
Immunohistochemical analysis of paraffin-embedded human kidney tissue using anti-LAMP2a antibody. Counter stained with hematoxylin.



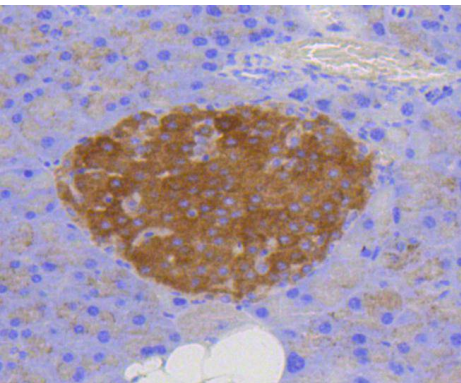
Immunohistochemical analysis of paraffin-embedded human pancreas tissue using anti-LAMP2a antibody. Counter stained with hematoxylin.



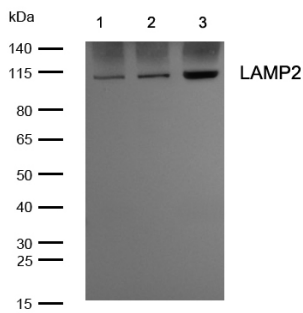
Immunohistochemical analysis of paraffin-embedded mouse kidney tissue using anti-LAMP2a antibody. Counter stained with hematoxylin.



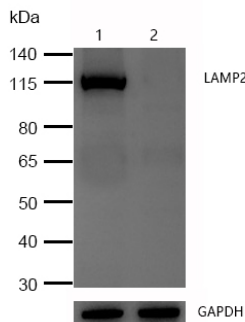
Immunohistochemical analysis of paraffin-embedded mouse placenta tissue using anti-LAMP2a antibody. Counter stained with hematoxylin.



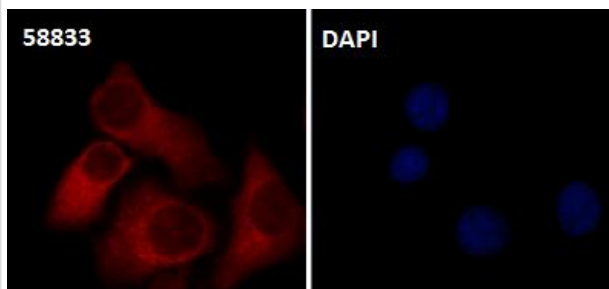
Immunohistochemical analysis of paraffin-embedded mouse brain tissue using anti-LAMP2a antibody. Counter stained with hematoxylin.



All lanes: LAMP2 Rabbit mAb at 1/1k dilution
 Lane 1 : Mouse liver lysates
 Lane 2 : Rat liver lysates
 Lane 3 : JAR whole cell lysates
 Lysates/proteins at 20 µg per lane.
 Secondary: Goat Anti-Rabbit IgG H&L (HRP) at 1/20000 dilution
 Predicted band size: 45 kDa
 Observed band size: 110 kDa
 Exposure time: 4 seconds



All lanes :LAMP2 Rabbit mAb at 1/1k dilution
 Lane 1 : Wild-type HAP1 cell lysate
 Lane 2 : LAMP2 knockdown HAP1 cell lysate
 Lysates/proteins at 20 µg per lane.



Immunocytochemistry/ Immunofluorescence LAMP2 antibody (48611)
 ICC/IF staining of LAMP2 in Hela cells. Cells were fixed with 4% Paraformaldehyde permeabilized with 0.1% Triton X-100.

Samples were incubated with 48611 at a working dilution of 1/100. The secondary antibody was Alexa FluorB 647 goat anti rabbit, used at a dilution of 1/500.

Nuclei

were counterstained with DAPI.

Background

Lysosome-associated membrane proteins (LAMP) are glycosylated type I membrane proteins that play a role in the biogenesis of the pigment melanin. LAMP-1 (also designated CD107A) and LAMP-2 (also designated CD107B) are involved in a variety of functions, including cellular adhesion, and are thought to participate in the process of tumor invasion and metastasis. Newly synthesized LAMP-1 and LAMP-2 proteins are sorted at the trans Golgi network and are transported intracellularly via a pathway that is distinct from the clathrin-coated vesicles used for the mannose-6 phosphate receptor. LAMP-1 is expressed on the surface of thrombin-activated but not resting platelets, and it is thought to be involved in the adhesive, prothrombic properties of these cells. Both LAMP-1 and LAMP-2 are involved in maintaining lysosome acidity and protecting the lysosomal membranes from autodigestion, and their expression is increased in patients with lysosomal storage disorders.

References

1. Guan, JJ. et al. 2015. DRAM1 regulates apoptosis through increasing protein levels and lysosomal localization of BAX. *Cell death & disease*. 6: e1624.
2. Gu, G. et al. 2013. Ubiquitin E3 Ligase A20 is Required in Degradation of Microbial Superantigens in Vascular Endothelial Cells. *Cell Biochem. Biophys*. 66: 649-655.

Note: This product is for in vitro research use only and is not intended for use in humans or animals.