

Bcl-XL Rabbit mAb

Catalog No: #48688

Package Size: #48688-1 50ul #48688-2 100ul

Orders: order@signalwayantibody.comSupport: tech@signalwayantibody.com

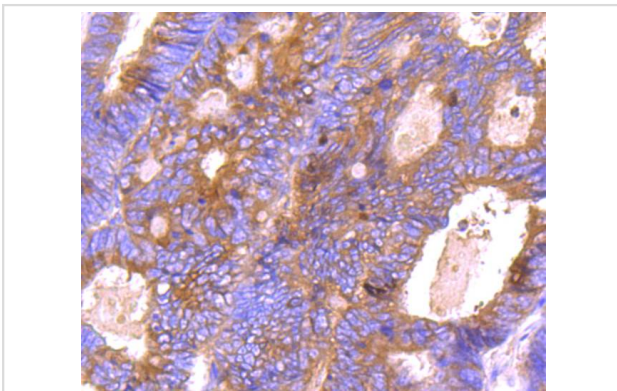
Description

Product Name	Bcl-XL Rabbit mAb
Host Species	Recombinant Rabbit
Clonality	Monoclonal antibody
Clone No.	SZ3-03
Purification	ProA affinity purified
Applications	WB, ICC/IF, IHC, IP, FC
Species Reactivity	Human;Mouse;Rat
Immunogen Description	recombinant protein
Conjugates	Unconjugated
Other Names	Apoptosis regulator Bcl X antibody Apoptosis regulator Bcl-X antibody Apoptosis regulator BclX antibody B cell lymphoma 2 like antibody B2CL1_HUMAN antibody Bcl 2 like 1 protein antibody Bcl X antibody Bcl xL antibody BCL XL/S antibody Bcl xS antibody Bcl-2-like protein 1 antibody Bcl2 Like 1 antibody Bcl2 related gene antibody Bcl2-L-1 antibody BCL2L antibody Bcl2l1 antibody BCLX antibody BclXL antibody BclXs antibody DKFZp781P2092 antibody PPP1R52 antibody Protein phosphatase 1 regulatory subunit 52 antibody
Accession No.	Swiss-Prot#:Q07817
Calculated MW	26 kDa
SDS-PAGE MW	26 kDa
Formulation	1*TBS (pH7.4), 1%BSA, 40%Glycerol. Preservative: 0.05% Sodium Azide.
Storage	Store at -20°C

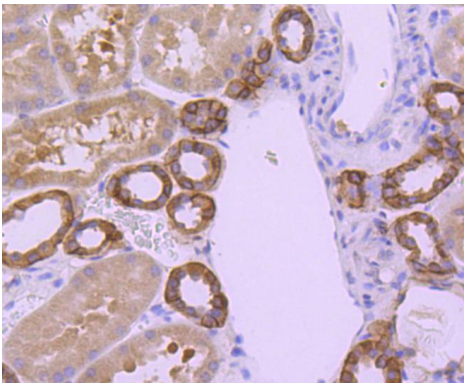
Application Details

WB: 1:1,000 IHC: 1:50-1:200 ICC: 1:50-1:200 FC: 1:50-1:100

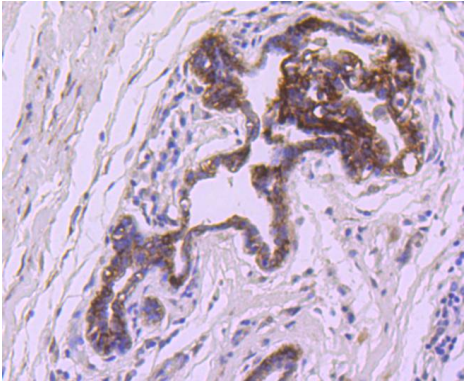
Images



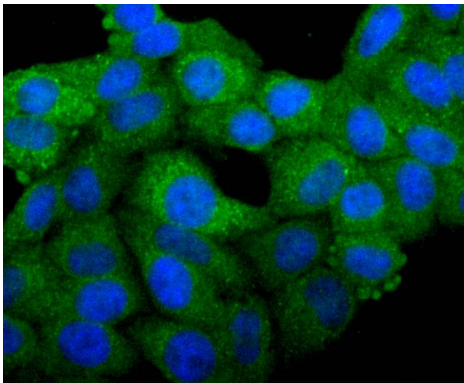
Immunohistochemical analysis of paraffin-embedded human colon cancer tissue using anti-Bcl-XL antibody. Counter stained with hematoxylin.



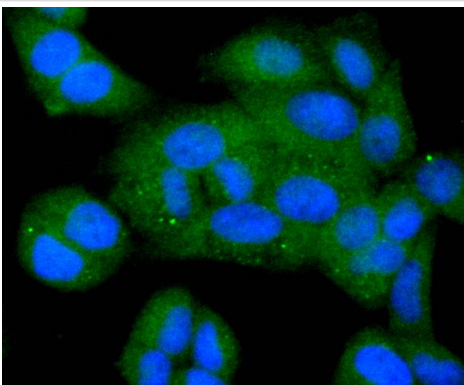
Immunohistochemical analysis of paraffin-embedded human kidney tissue using anti-Bcl-XL antibody. Counter stained with hematoxylin.



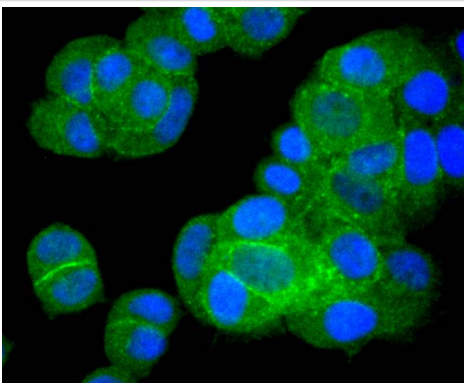
Immunohistochemical analysis of paraffin-embedded human breast carcinoma tissue using anti-Bcl-XL antibody. Counter stained with hematoxylin.



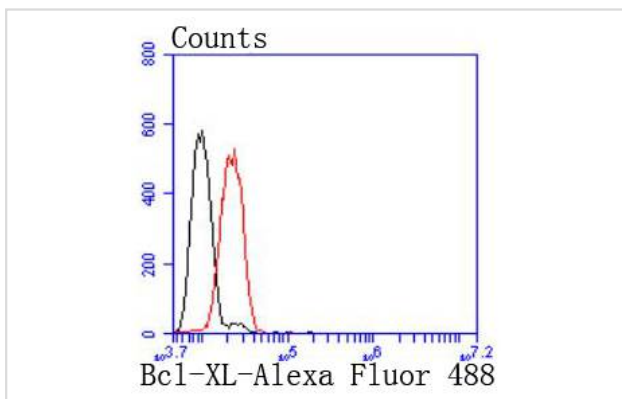
ICC staining Bcl-XL in HepG2 cells (green). The nuclear counter stain is DAPI (blue). Cells were fixed in paraformaldehyde, permeabilised with 0.25% Triton X100/PBS.



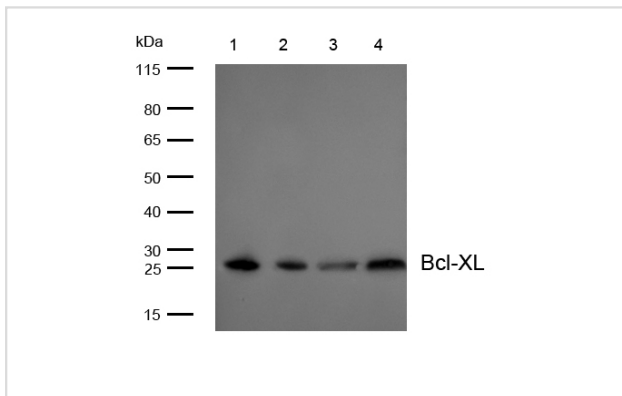
ICC staining Bcl-XL in HeLa cells (green). The nuclear counter stain is DAPI (blue). Cells were fixed in paraformaldehyde, permeabilised with 0.25% Triton X100/PBS.



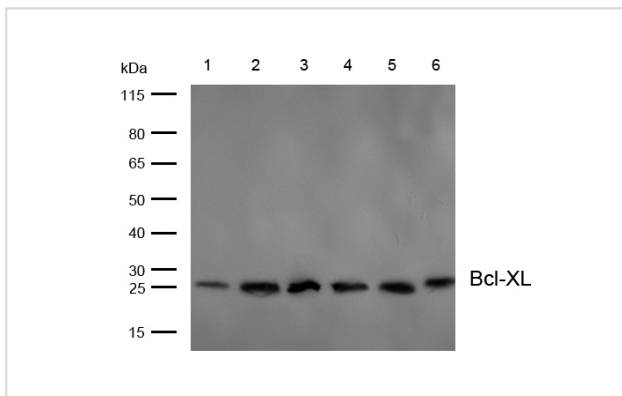
ICC staining Bcl-XL in MCF-7 cells (green). The nuclear counter stain is DAPI (blue). Cells were fixed in paraformaldehyde, permeabilised with 0.25% Triton X100/PBS.



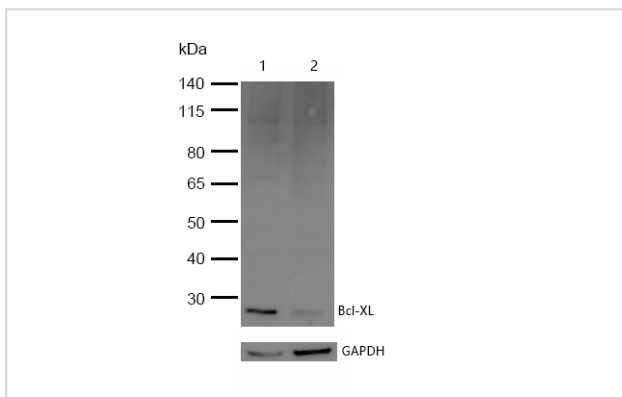
Flow cytometric analysis of HeLa cells with Bcl-XL antibody at 1/50 dilution (red) compared with an unlabelled control (cells without incubation with primary antibody; black). Alexa Fluor 488-conjugated goat anti rabbit IgG was used as the secondary antibody.



All lanes: Bcl-XL Rabbit mAb at 1/1k dilution
Lane 1 : K562 whole cell lysates
Lane 2 : JK whole cell lysates
Lane 3 : MCF-7 whole cell lysates
Lane 4 : C6 whole cell lysates
Lysates/proteins at 20 µg per lane.
Secondary All lanes : Goat Anti-Rabbit IgG H&L (HRP) at 1/20000 dilution
Predicted band size: 26 kDa
Observed band size: 26 kDa
Exposure time: 5 seconds



All lanes: Bcl-XL Rabbit mAb at 1/1k dilution
Lane 1 : Mouse brain lysates
Lane 2 : Mouse heart lysates
Lane 3 : Mouse liver lysates
Lane 4 : Rat brain lysates
Lane 5 : Rat heart lysates
Lane 6 : Rat liver lysates
Lysates/proteins at 20 µg per lane.
Secondary All lanes : Goat Anti-Rabbit IgG H&L (HRP) at 1/20000 dilution
Predicted band size: 26 kDa
Observed band size: 26 kDa
Exposure time: 3 seconds



All lanes: Bcl-XL Rabbit mAb at 1/1k dilution
Lane 1 : Wild-type HeLa cell lysate
Lane 2 : Bcl-XL knockdown HeLa cell lysate
Lysates/proteins at 20 µg per lane.

Background

The Bcl-2 gene was isolated at the chromosomal breakpoint of t(14;18) bearing follicular B cell lymphomas. Bcl-2 blocks cell death following a variety of stimuli and confers a death-sparing effect to certain hematopoietic cell lines following growth factor withdrawal. A second protein, designated Bcl-associated X protein (Bax) p21, has extensive amino acid homology with Bcl-2 and both homodimerizes and heterodimerizes with Bcl-2. Overexpression of Bax accelerates apoptotic death induced by cytokine deprivation in an IL-3-dependent cell line, and Bax also counters the death repressor activity of Bcl-2. Bcl-x, one of several additional proteins with sequence homology to Bcl-2, is expressed as Bcl-xL, a 233 amino acid protein with 43% sequence identity with Bcl-2 that suppresses cell death, and Bcl-xS, a shorter variant that is 178 amino acids in length and lacks a 63 amino acid region (amino acids 126-188) found in Bcl-xL and which functions as a dominant inhibitor of Bcl-2. A further apoptosis-inducing protein, Bad,

dimerizes both with Bcl-xL and to a lesser extent with Bcl-2, thus displacing Bax and inducing apoptosis.

References

1. Cheng H Inhibiting CD146 by its Monoclonal Antibody AA98 Improves Radiosensitivity of Cervical Cancer Cells. *Med Sci Monit* 22:3328-33 (2016).
2. Wu J et al. Silencing of Kv1.5 Gene Inhibits Proliferation and Induces Apoptosis of Osteosarcoma Cells. *Int J Mol Sci* 16:26914-26 (2015).

Note: This product is for in vitro research use only and is not intended for use in humans or animals.