

CD68 Rabbit mAb

Catalog No: #49067

Package Size: #49067-1 50ul #49067-2 100ul

Orders: order@signalwayantibody.comSupport: tech@signalwayantibody.com

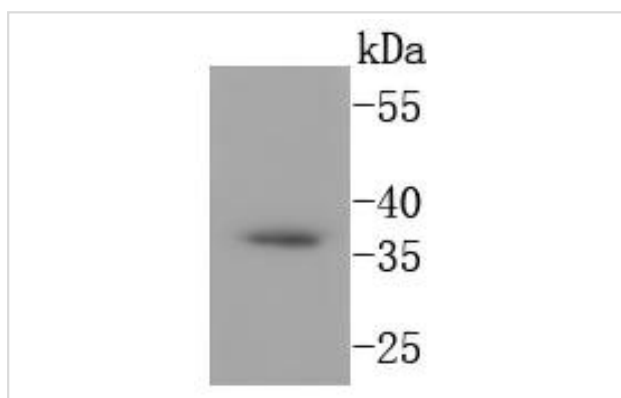
Description

Product Name	CD68 Rabbit mAb
Host Species	Recombinant Rabbit
Clonality	Monoclonal antibody
Clone No.	SN07-27
Purification	ProA affinity purified
Applications	WB
Species Reactivity	Human;Mouse;Rat
Immunogen Description	recombinant protein
Conjugates	Unconjugated
Other Names	CD 68 antibody CD68 antibody CD68 antigen antibody CD68 molecule antibody CD68_HUMAN antibody DKFZp686M18236 antibody gp11 antibody Gp110 antibody LAMP4 antibody Macrophage antigen CD68 (microsialin) antibody MACROPHAGE ANTIGEN CD68 antibody Macrosialin antibody SCARD1 antibody Scavenger receptor class D member 1 antibody
Accession No.	Swiss-Prot#:P34810
Calculated MW	37 kDa
Formulation	1*TBS (pH7.4), 1%BSA, 40%Glycerol. Preservative: 0.05% Sodium Azide.
Storage	Store at -20°C

Application Details

WB: 1:1,000

Images



Background

CD68, also called Scavenger Receptor D1 (SR-D1) or macrosialin in mouse, is a 110 kDa type I transmembrane glycoprotein that belongs to the LAMP family of molecules. It contains a 300 amino acid (aa) extracellular region that is rich in threonine and serine, a likely attachment site for multiple

carbohydrates. Human CD68 shares 74% aa sequence identity to mouse CD68 in the extracellular region. CD68 is found on monocytes and macrophages and serves as a scavenger receptor for oxidized LDL.

References

1. Behler F et al. Macrophage-inducible C-type lectin Mincle-expressing dendritic cells contribute to control of splenic *Mycobacterium bovis* BCG infection in mice. *Infect Immun* 83:184-96 (2015).
2. Furukawa S et al. Preferential M2 macrophages contribute to fibrosis in IgG4-related dacryoadenitis and sialoadenitis, so-called Mikulicz's disease. *Clin Immunol* 156:9-18 (2015).

Note: This product is for in vitro research use only and is not intended for use in humans or animals.