

# Prostate Specific Antigen Rabbit mAb

Catalog No: #49127

Package Size: #49127-1 50ul #49127-2 100ul

Orders: [order@signalwayantibody.com](mailto:order@signalwayantibody.com)Support: [tech@signalwayantibody.com](mailto:tech@signalwayantibody.com)

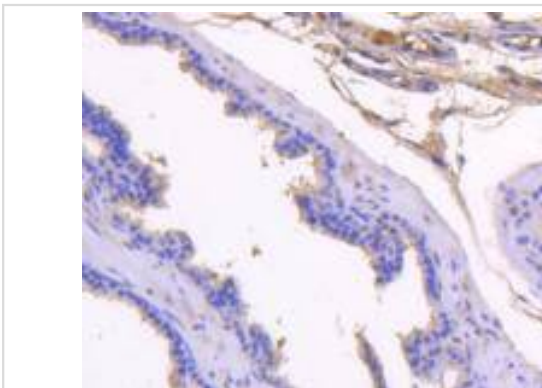
## Description

Product Name	Prostate Specific Antigen Rabbit mAb
Host Species	Recombinant Rabbit
Clonality	Monoclonal antibody
Clone No.	SD07-45
Purification	ProA affinity purified
Applications	WB, ICC/IF, IHC
Species Reactivity	Hu
Immunogen Description	recombinant protein
Other Names	antigen, prostate-specific antibody APS antibody Gamma seminoprotein antibody Gamma-seminoprotein antibody hK3 antibody Kallikrein 3 antibody Kallikrein related peptidase 3 antibody Kallikrein-3 antibody KLK 3 antibody KLK2A1 antibody Klk3 antibody KLK3_HUMAN antibody P-30 antigen antibody P30 antigen antibody Prostate-specific antigen antibody Psa antibody Semenogelase antibody Seminogelase antibody Seminogelase antigen
Accession No.	Swiss-Prot#:P07288
Calculated MW	34 kDa
Formulation	1*TBS (pH7.4), 1%BSA, 40%Glycerol. Preservative: 0.05% Sodium Azide.
Storage	Store at -20°C

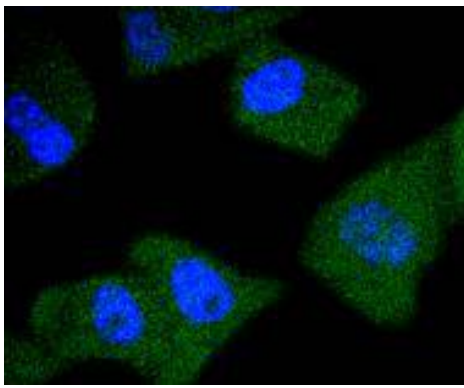
## Application Details

WB: 1:1,000IHC: 1:50-1:200ICC: 1:50-1:200

## Images



Immunohistochemical analysis of paraffin-embedded mouse prostate tissue using anti-PSA antibody. Counter stained with hematoxylin.



ICC staining PSA in PC-3M cells (green). The nuclear counter stain is DAPI (blue). Cells were fixed in paraformaldehyde, permeabilised with 0.25% Triton X100/PBS.

## Background

Prostate specific antigen (PSA), also designated  $\gamma$ -seminoprotein, seminin, p30 antigen, semenogelase, and kallikrein 3 (KLK3), was first identified as a glycoprotein in human seminal plasma. PSA was determined by sequence similarity to be a member of the kallikrein subfamily of trypsin proteases. PSA is a serine protease that hydrolyzes the major human seminal protein, the seminal plasma mobility inhibitor precursor, or semenogelin I (SPMIP or Sgl), which leads to semen liquification. PSA production and expression are highest in normal, benign hyperplastic and cancerous tissues of the prostate, although PSA has also been detected in accessory male sex glands and in breast cancer. PSA has been identified as an aid in the early detection of prostate cancer and is a commonly used tumor marker.

## References

1. Sanz G et al. Promotion of cancer cell invasiveness and metastasis emergence caused by olfactory receptor stimulation. PLoS One 9:e85110 (2014).
2. Berry SM et al. Streamlining immunoassays with immiscible filtrations assisted by surface tension. Anal Chem 84:5518-23 (2012).

**Note:** This product is for in vitro research use only and is not intended for use in humans or animals.