

FGFR1 Rabbit mAb

Catalog No: #49175



Package Size: #49175-1 50ul #49175-2 100ul

Orders: order@signalwayantibody.comSupport: tech@signalwayantibody.com

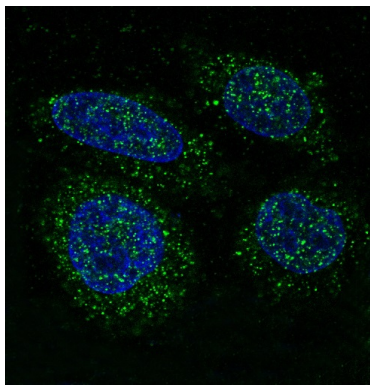
Description

Product Name	FGFR1 Rabbit mAb
Host Species	Recombinant Rabbit
Clonality	Monoclonal antibody
Clone No.	SD08-25
Purification	Affinity-chromatography
Applications	WB;IHC;ICC/IF
Species Reactivity	Human
Immunogen Type	peptide
Immunogen Description	A synthesized peptide derived from human FGFR1
Conjugates	Unconjugated
Other Names	Basic fibroblast growth factor receptor 1 antibody bFGF-R-1 antibody BFGFR antibody CD331 antibody CEK antibody FGFR antibody FGFR 1 antibody FGFR-1 antibody FGFR1 antibody FGFR1/PLAG1 fusion antibody FGFR1_HUMAN antibody fibroblast growth factor receptor 1 antibody FLG antibody FLT-2 antibody FLT2 antibody Fms-like gene antibody Fms-like tyrosine kinase 2 antibody fms-related tyrosine kinase 2 antibody HBGFR antibody heparin-binding growth factor receptor antibody HH2 antibody HRTFDS antibody hydroxyaryl-protein kinase antibody KAL2 antibody N-SAM antibody OGD antibody Proto-oncogene c-Fgr antibody
Accession No.	Swiss-Prot#:P11362
Calculated MW	92 kDa
SDS-PAGE MW	120, 140 kDa
Concentration	2mg/ml
Formulation	Rabbit IgG in 10mM phosphate buffered saline , pH 7.4, 150mM sodium chloride, 0.05% BSA, 0.02% sodium azide and 50% glycerol.
Storage	Store at +4°C for short term. Store at -20°C for long term. Avoid freeze/thaw cycle.

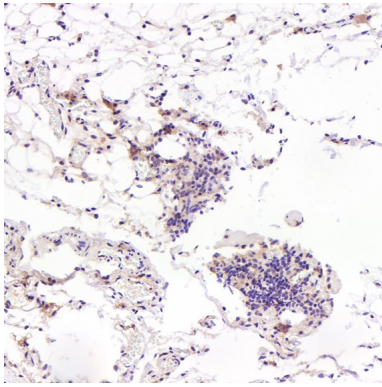
Application Details

WB 1:1000-1:2000; IHC 1:50-1:100; ICC/IF 1:50-1:200

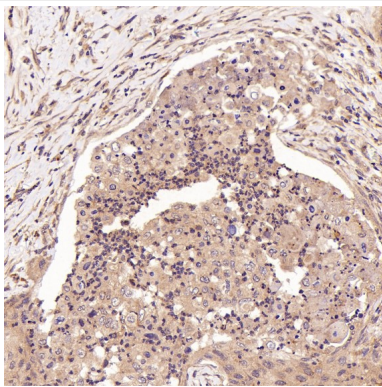
Images



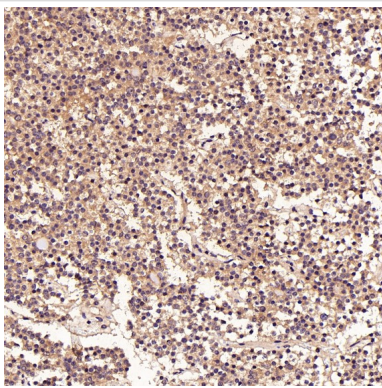
Immunofluorescent analysis of HeLa cells, using FGFR1 Antibody.



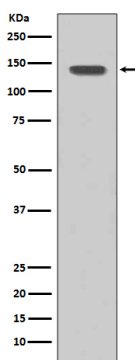
Immunohistochemical analysis of paraffin-embedded Rat pancreas, using the Antibody at 1:50 dilution.



Immunohistochemical analysis of paraffin-embedded Human thymoma, using the Antibody at 1:50 dilution.



Immunohistochemical analysis of paraffin-embedded Human pituitary tumor, using the Antibody at 1:50 dilution.



Western blot analysis of FGFR1 expression in SH-SY5Y cell lysate.

Background

Tyrosine-protein kinase that acts as a cell-surface receptor for fibroblast growth factors and plays an essential role in the regulation of embryonic development, cell proliferation, differentiation and migration.

References

1. Sneddon WB et al. Convergent Signaling Pathways Regulate Parathyroid Hormone and Fibroblast Growth Factor-23 Action on NPT2A-mediated Phosphate Transport. *J Biol Chem* 291:18632-42 (2016).
2. Koole K et al. FGFR1 Is a Potential Prognostic Biomarker and Therapeutic Target in Head and Neck Squamous Cell Carcinoma. *Clin Cancer Res* 22:3884-93 (2016).

Published Papers

el at., METTL3 suppresses anlotinib sensitivity by regulating m6A modification of FGFR3 in oral squamous cell carcinoma. In *Cancer Cell Int* on 2022 Sep 27 by Jie Chen, Shuai Li, et al.. PMID:36167542, , (2022)

[PMID:36167542](#)

Note: This product is for in vitro research use only and is not intended for use in humans or animals.