

PKC delta Rabbit mAb

Catalog No: #49299

Package Size: #49299-1 50ul #49299-2 100ul

Orders: order@signalwayantibody.comSupport: tech@signalwayantibody.com

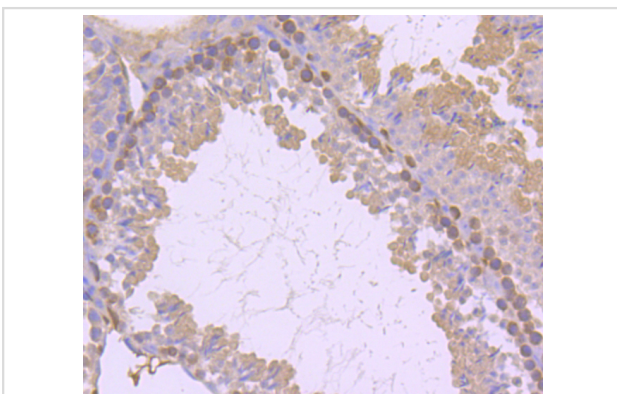
Description

Product Name	PKC delta Rabbit mAb
Host Species	Recombinant Rabbit
Clonality	Monoclonal antibody
Clone No.	JJ093-02
Purification	ProA affinity purified
Applications	WB, ICC/IF, IHC
Species Reactivity	Human;Mouse;Rat
Immunogen Description	recombinant protein
Conjugates	Unconjugated
Other Names	CVID9 antibody D14Erd420e antibody Kinase PKC delta antibody KPCD antibody KPCD_HUMAN antibody MAY 1 antibody MAY1 antibody MGC49908 antibody nPKC delta antibody nPKC-delta antibody PCKd antibody PKC d antibody PKC delta antibody PKCD antibody PKCdelta antibody PRKC D antibody PRKC delta antibody Prkcd antibody Protein Kinase C delta antibody Protein kinase C delta type antibody Protein kinase C delta VIII antibody Protein Kinase Cdelta antibody Tyrosine protein kinase PRKCD antibody
Accession No.	Swiss-Prot#:Q05655
Calculated MW	78 kDa
SDS-PAGE MW	78 kDa
Formulation	1*TBS (pH7.4), 1%BSA, 40%Glycerol. Preservative: 0.05% Sodium Azide.
Storage	Store at -20°C

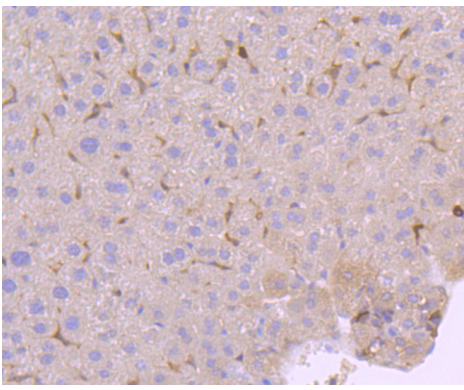
Application Details

WB: 1:1,000-1:2,000 IHC: 1:50-1:200 ICC: 1:50-1:200

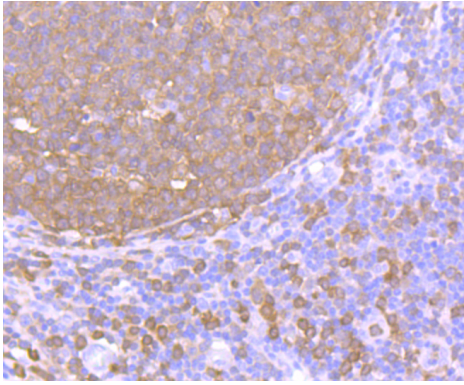
Images



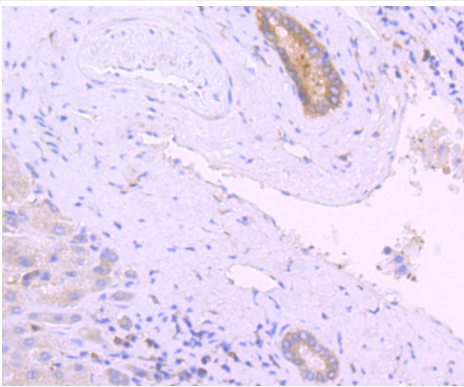
Immunohistochemical analysis of paraffin-embedded mouse testis tissue using anti-PKC delta antibody. Counter stained with hematoxylin.



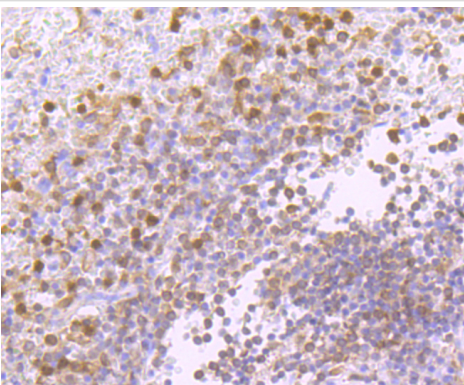
Immunohistochemical analysis of paraffin-embedded mouse liver tissue using anti-PKC delta antibody. Counter stained with hematoxylin.



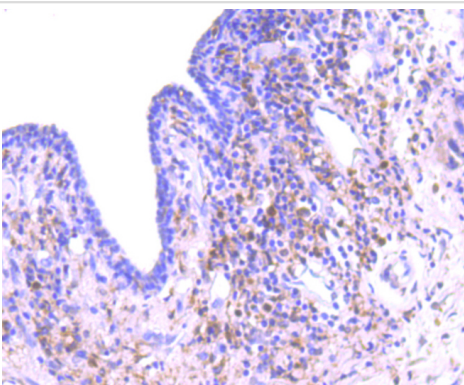
Immunohistochemical analysis of paraffin-embedded human tonsil tissue using anti-PKC delta antibody. Counter stained with hematoxylin.



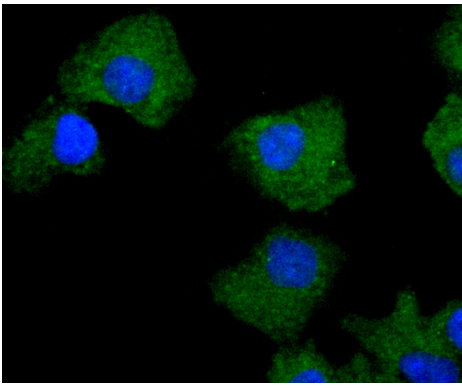
Immunohistochemical analysis of paraffin-embedded human liver tissue using anti-PKC delta antibody. Counter stained with hematoxylin.



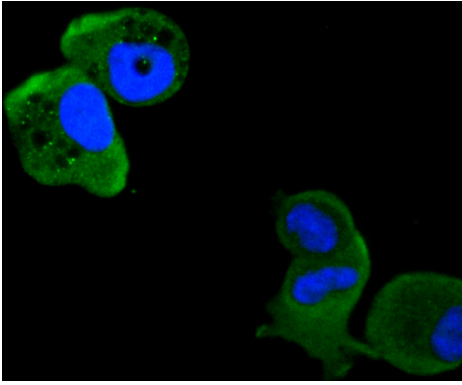
Immunohistochemical analysis of paraffin-embedded human spleen tissue using anti-PKC delta antibody. Counter stained with hematoxylin.



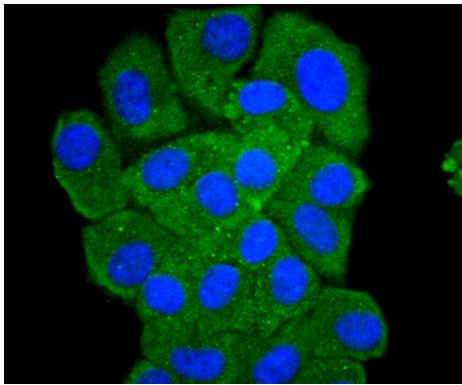
Immunohistochemical analysis of paraffin-embedded human breast carcinoma tissue using anti-PKC delta antibody. Counter stained with hematoxylin.



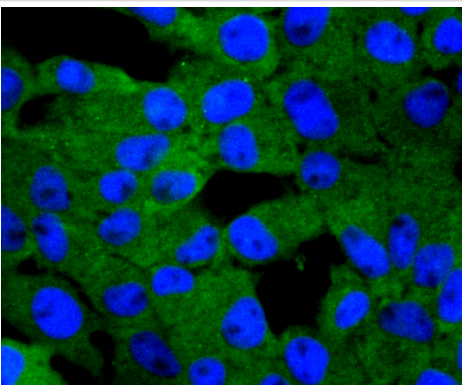
ICC staining PKC delta in A549 cells (green). The nuclear counter stain is DAPI (blue). Cells were fixed in paraformaldehyde, permeabilised with 0.25% Triton X100/PBS.



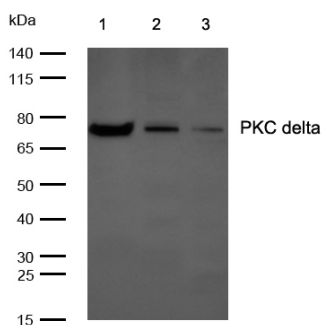
ICC staining PKC delta in MCF-7 cells (green). The nuclear counter stain is DAPI (blue). Cells were fixed in paraformaldehyde, permeabilised with 0.25% Triton X100/PBS.



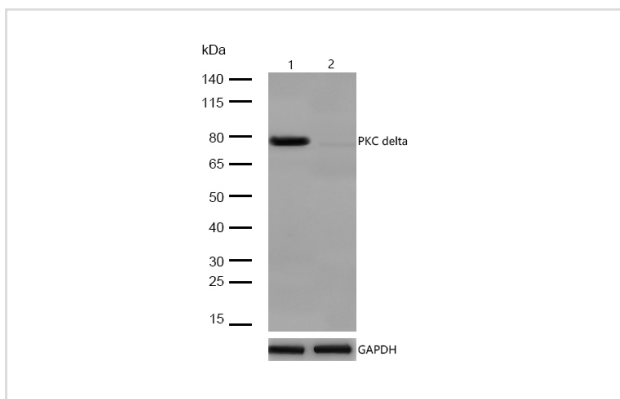
ICC staining PKC delta in HepG2 cells (green). The nuclear counter stain is DAPI (blue). Cells were fixed in paraformaldehyde, permeabilised with 0.25% Triton X100/PBS.



ICC staining PKC delta in RH-35 cells (green). The nuclear counter stain is DAPI (blue). Cells were fixed in paraformaldehyde, permeabilised with 0.25% Triton X100/PBS.



All lanes: PKC delta Rabbit mAb at 1/1k dilution
 Lane 1 : HeLa whole cell lysates
 Lane 2 : Mouse brain lysates
 Lane 3 : Rat brain lysates
 Lysates/proteins at 20 µg per lane.
 Secondary All lanes : Goat Anti-Rabbit IgG H&L (HRP) at 1/20000 dilution
 Predicted band size: 78 kDa
 Observed band size: 78 kDa
 Exposure time: 6 seconds



All lanes:PKC delta Rabbit mAb at 1/1k dilution
 Lane 1 : Wild-type HeLa cell lysate
 Lane 2 :PKC delta Rabbit mAb knockdown HeLa cell lysate
 Lysates/proteins at 20 µg per lane.

Background

Members of the protein kinase C (PKC) family play a key regulatory role in a variety of cellular functions, including cell growth and differentiation, gene expression, hormone secretion and membrane function. PKCs were originally identified as serine/threonine protein kinases whose activity was dependent on calcium and phospholipids. Diacylglycerols (DAG) and tumor promoting phorbol esters bind to and activate PKC. PKCs can be subdivided into at least two major classes, including conventional (c) PKC isoforms (α , β I, β II and γ) and novel (n) PKC isoforms (δ , ϵ , ζ , η , θ , λ I, μ and ν). Patterns of expression for each PKC isoform differ among tissues and PKC family members exhibit clear differences in their cofactor dependencies. For instance, the kinase activities of PKC δ and ϵ are independent of Ca^{2+} . On the other hand, most of the other PKC members possess phorbol ester-binding activities and kinase activities.

References

1. Slusarczyk J et al. Anti-inflammatory properties of tianeptine on lipopolysaccharide-induced changes in microglial cells involve toll-like receptor-related pathways. *J Neurochem* 136:958-70 (2016).
2. Song X et al. RasGRPs are targets of the anti-cancer agent ingenol-3-angelate. *PLoS One* 8:e72331 (2013).

Note: This product is for in vitro research use only and is not intended for use in humans or animals.