

## beta Actin(HRP conjugated) Rabbit mAb

Catalog No: #49381



Package Size: #49381-1 50ul #49381-2 100ul

Orders: order@signalwayantibody.com

Support: tech@signalwayantibody.com

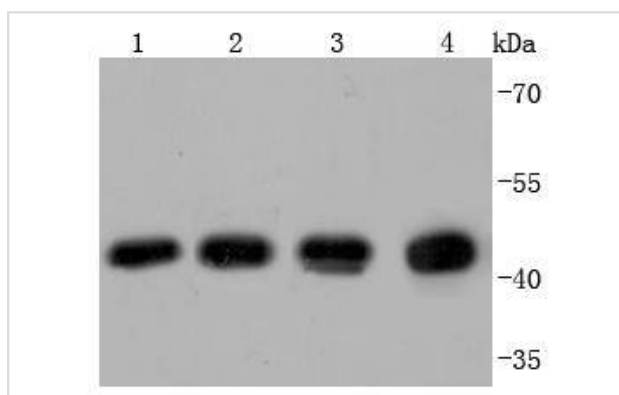
## Description

Product Name	beta Actin(HRP conjugated) Rabbit mAb
Host Species	Recombinant Rabbit
Clonality	Monoclonal antibody
Clone No.	JF53-10
Purification	ProA affinity purified
Applications	WB
Species Reactivity	Hu, Ms, Rt, Monkey, Hamster, Plant, zebrafish
Immunogen Description	recombinant protein
Conjugates	HRP
Other Names	A26C1A antibody A26C1B antibody ACTB antibody ACTB_HUMAN antibody Actin beta antibody Actin cytoplasmic 1 antibody Actin, cytoplasmic 1, N-terminally processed antibody Actx antibody b actin antibody Beta cytoskeletal actin antibody Beta-actin antibody BRWS1 antibody E430023M04Rik antibody MGC128179 antibody PS1TP5 binding protein 1 antibody PS1TP5BP1 antibody
Accession No.	Swiss-Prot#:P60709
Calculated MW	42 kDa
Formulation	1*TBS (pH7.4), 1%BSA, 40%Glycerol. Preservative: 0.05% Sodium Azide.
Storage	Store at -20°C

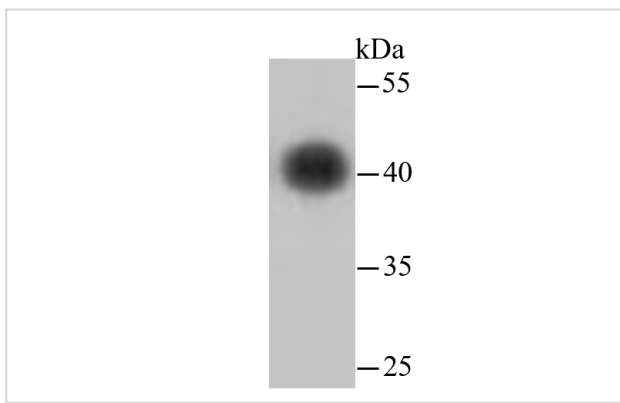
## Application Details

WB: 1:1,000-1:2,000

## Images



Western blot analysis of beta Actin on different lysates using anti-beta Actin antibody at 1/1,000 dilution. Positive control:  
 Lane 1: HeLa  
 Lane 2: PC-12  
 Lane 3: NIH/3T3  
 Lane 4: zebrafish



Western blot analysis of beta Actin on hybrid fish (crucian-carp) brain tissue lysate using anti-beta Actin antibody at 1/500 dilution.

## Background

All eukaryotic cells express Actin, which often constitutes as much as 50% of total cellular protein. Actin filaments can form both stable and labile structures and are crucial components of microvilli and the contractile apparatus of muscle cells. While lower eukaryotes, such as yeast, have only one Actin gene, higher eukaryotes have several isoforms encoded by a family of genes. At least six types of Actin are present in mammalian tissues and fall into three classes.  $\alpha$ -Actin expression is limited to various types of muscle, whereas  $\beta$ -Actin and  $\gamma$ -Actin are the principle constituents of filaments in other tissues. Members of the small GTPase family regulate the organization of the Actin cytoskeleton. Rho controls the assembly of Actin stress fibers and focal adhesion. Rac regulates Actin filament accumulation at the plasma membrane. Cdc42 stimulates formation of filopodia.

## References

1. Wang H et al. Role of the orexin (hypocretin) system in contextual fear conditioning in rats. *Behav Brain Res* 316:47-53 (2017).
2. Gruber R et al. YAP1 and TAZ Control Pancreatic Cancer Initiation in Mice by Direct Up-regulation of JAK-STAT3 Signaling. *Gastroenterology* 151:526-39 (2016).

## Published Papers

Guo Jieyun, Yan Lulu, Zhao Chao, Zhang Bo, Qiu Lihua et al., Genetic Characterization of Primordial Germ Cells in Spotted Sea Bass (*Lateolabrax maculatus*), *Genes*, (2025)

[PMID:41009958](https://pubmed.ncbi.nlm.nih.gov/41009958/)

Note: This product is for in vitro research use only and is not intended for use in humans or animals.