

Nuf2 Rabbit mAb

Catalog No: #49882



Package Size: #49882-1 50ul #49882-2 100ul

Orders: order@signalwayantibody.com

Support: tech@signalwayantibody.com

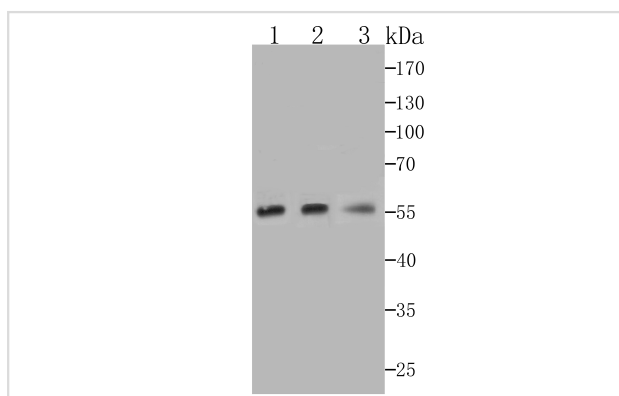
Description

| | |
|-----------------------|--|
| Product Name | Nuf2 Rabbit mAb |
| Host Species | Recombinant Rabbit |
| Clonality | Monoclonal antibody |
| Clone No. | JG34-64 |
| Purification | ProA affinity purified |
| Applications | WB,FC |
| Species Reactivity | Human |
| Immunogen Description | Recombinant protein within human Nuf2 aa 1-200. |
| Conjugates | Unconjugated |
| Other Names | Cancer/testis antigen 106 antibody CDCA 1 antibody CDCA1 antibody Cell division cycle associated 1 antibody Cell division cycle associated protein 1 antibody Cell division cycle-associated protein 1 antibody CT106 antibody hNuf 2 antibody hNuf2 antibody hNuf2R antibody hsNuf2 antibody Kinetochore protein Nuf2 antibody Nuf 2 antibody NUF2 antibody NUF2 NDC80 kinetochore complex component antibody NUF2 NDC80 kinetochore complex component homolog antibody NUF2, S. cerevisiae, homolog of antibody NUF2_HUMAN antibody NUF2R antibody |
| Accession No. | Swiss-Prot#:Q9BZD4 |
| Calculated MW | 54 kDa |
| Formulation | 1*TBS (pH7.4), 1%BSA, 40%Glycerol. Preservative: 0.05% Sodium Azide. |
| Storage | Store at -20°C |

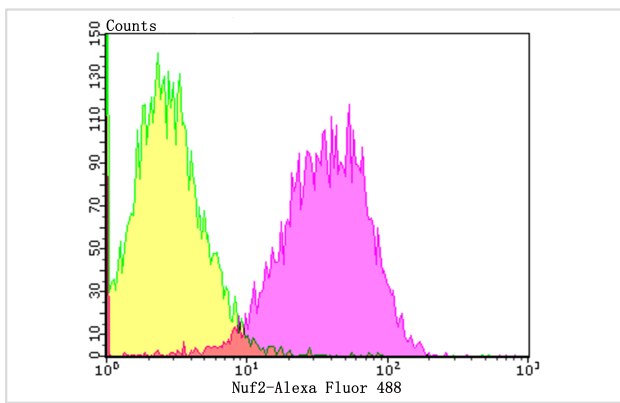
Application Details

WB: 1:500-1:2,000 FC: 1:50-1:100

Images



Western blot analysis of Nuf2 on different cell lysates using anti-Nuf2 at 1/1,000 dilution. Positive control 1: K562 Line 2: PC-3M Line 3: THP-1



Flow cytometric analysis of A431 cells with Nuf2 antibody at 1/50 dilution (purple) compared with an unlabelled control (cells without incubation with primary antibody; yellow). Alexa Fluor 488-conjugated goat anti-rabbit IgG was used as the secondary antibody.

Background

This gene encodes a protein that is highly similar to yeast Nuf2, a component of a conserved protein complex associated with the centromere. Yeast Nuf2 disappears from the centromere during meiotic prophase when centromeres lose their connection to the spindle pole body, and plays a regulatory role in chromosome segregation. The encoded protein is found to be associated with centromeres of mitotic HeLa cells, which suggests that this protein is a functional homolog of yeast Nuf2. Acts as a component of the essential kinetochore-associated NDC80 complex, which is required for chromosome segregation and spindle checkpoint activity. Required for kinetochore integrity and the organization of stable microtubule binding sites in the outer plate of the kinetochore. The NDC80 complex synergistically enhances the affinity of the SKA1 complex for microtubules and may allow the NDC80 complex to track depolymerizing microtubules.

References

1. Schmidt J.C. et al. The kinetochore-bound Ska1 complex tracks depolymerizing microtubules and binds to curved protofilaments. *Dev. Cell* 23:968-980 (2012).
2. Liu D. et al. Human NUF2 interacts with centromere-associated protein E and is essential for a stable spindle microtubule-kinetochore attachment. *J. Biol. Chem.* 282:21415-21424(2007).

Published Papers

Zhong Rongde, Liu Yunsheng, Li Qian, Kou Zengwei, Chen Fanfan, Wang Heng, Zhang Na, Tang Han, Zhang Yuan, Huang Guodong et al., Uncovering novel functions of NUF2 in glioblastoma and MRI-based expression prediction, *Scientific Reports*, (2025)

PMID:40890233

Note: This product is for in vitro research use only and is not intended for use in humans or animals.