

Secretory Phospholipase A2 Rabbit mAb

Catalog No: #52568



Package Size: #52568-1 50ul #52568-2 100ul

Orders: order@signalwayantibody.com

Support: tech@signalwayantibody.com

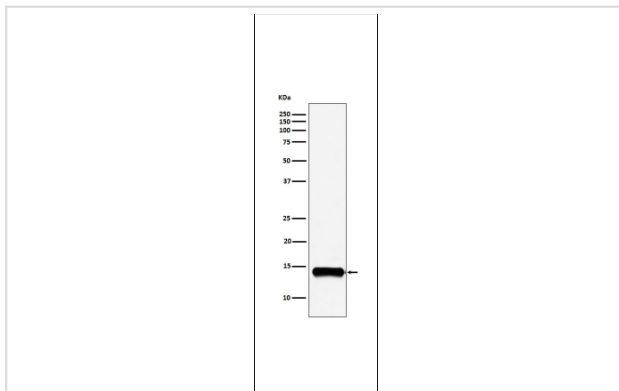
Description

Product Name	Secretory Phospholipase A2 Rabbit mAb
Host Species	Recombinant Rabbit
Clonality	Monoclonal
Clone No.	S09-4F9
Isotype	Rabbit IgG
Purification	Affinity-chromatography
Applications	WB
Species Reactivity	Human;Mouse;Rat
Immunogen Description	A synthesized peptide derived from human PLA2G2A
Conjugates	Unconjugated
Modification	Unmodification
Other Names	MOM1; PLA2; PLA2B; PLA2L; PLA2S; PLAS1; sPLA2
Accession No.	Swiss-Prot:P14555GenelD:5320
Calculated MW	14kDa
Concentration	0.8 mg/ml
Formulation	Rabbit IgG in 10mM phosphate buffered saline , pH 7.4, 150mM sodium chloride, 0.05% BSA, 0.02% sodium azide and 50% glycerol.
Storage	Store at 4°C short term. Aliquot and store at -20°C long term. Avoid freeze/thaw cycles.

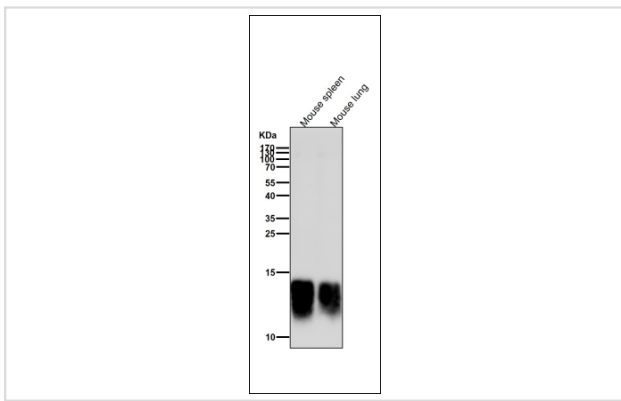
Application Details

WB 1:1000-1:2000

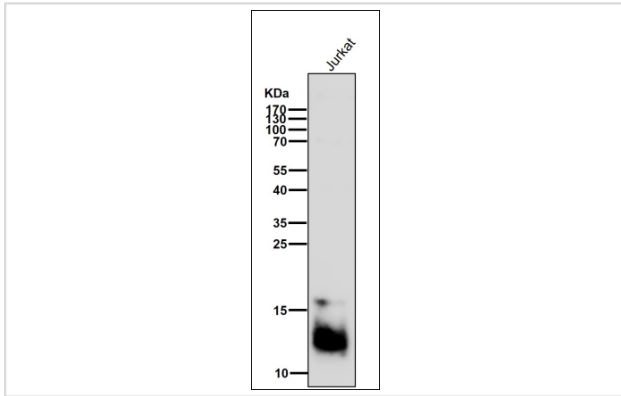
Images



Western blot analysis of PLA2G2A expression in A549 cell lysate.



All lanes use the Antibody at 1:5K dilution for 1 hour at room temperature.



All lanes use the Antibody at 1:5K dilution for 1 hour at room temperature.

Background

Thought to participate in the regulation of the phospholipid metabolism in biomembranes including eicosanoid biosynthesis. Catalyzes the calcium-dependent hydrolysis of the 2-acyl groups in 3-sn-phosphoglycerides.

Published Papers

Zong Yan, Liu Sihao, Yu Yubin, Wang Chunxiao, Cheng Chao, Liu Xiuping, Du Jiangbo, Gu Yonghui, Wu Kaili et al., Differential Tear Lipid Metabolomics Signatures Discriminate Superior Limbic Keratoconjunctivitis From Dry Eye Disease, *Translational vision science & technology*, (2025)

[PMID:41294299](#)

Note: This product is for in vitro research use only and is not intended for use in humans or animals.