

# Lamin A/C Rabbit mAb

Catalog No: #52789



Package Size: #52789-1 50ul #52789-2 100ul

Orders: [order@signalwayantibody.com](mailto:order@signalwayantibody.com)

Support: [tech@signalwayantibody.com](mailto:tech@signalwayantibody.com)

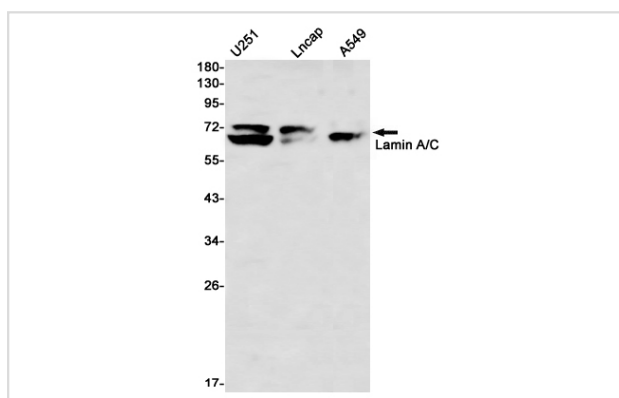
## Description

Product Name	Lamin A/C Rabbit mAb
Host Species	Recombinant Rabbit
Clonality	Monoclonal antibody
Clone No.	S07-115
Isotype	IgG
Purification	Affinity Purified
Applications	WB IHC
Species Reactivity	Human;Mouse;Rat
Immunogen Description	A synthetic peptide of human Lamin A/C
Conjugates	Unconjugated
Modification	Unmodification
Other Names	FPL; IDC; LFP; CDDC; EMD2; FPLD; HGPS; LDP1; LMN1; LMNC; MADA; PRO1; CDCD1; CMD1A; FPLD2; LMNL1; CMT2B1; LGMD1B
Accession No.	Swiss-Prot:P02545GeneID:4000
Calculated MW	Calculated MW:74 kDa,Observed MW:74,63 kDa
Formulation	50nM Tris-Glycine(pH 7.4), 0.15M NaCl, 40% Glycerol, 0.01% Sodium azide and 0.05% BSA
Storage	Store at 4°C short term. Aliquot and store at -20°C long term. Avoid freeze/thaw cycles.

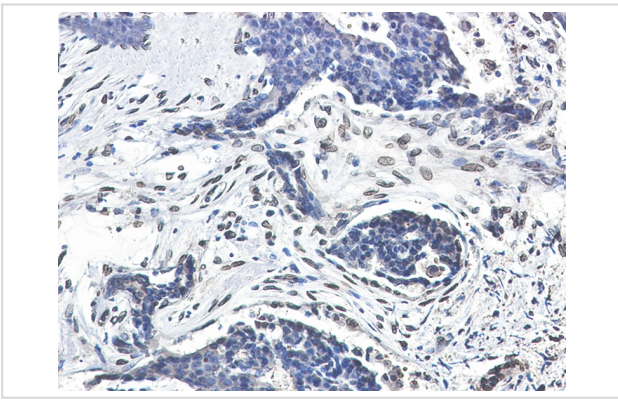
## Application Details

WB: 1/2000-1/10000 IHC: 1/50

## Images



Western blot detection of Lamin A/C in U251,Lncap,A549 using Lamin A/C Rabbit mAb(1:1000 diluted)



Immunohistochemistry of Lamin A/C in paraffin-embedded Human breast cancer tissue using Lamin A/C Rabbit mAb at dilution 1/50

## Background

Lamins are components of the nuclear lamina, a fibrous layer on the nucleoplasmic side of the inner nuclear membrane, which is thought to provide a framework for the nuclear envelope and may also interact with chromatin. Lamin A and C are present in equal amounts in the lamina of mammals. Recruited by DNA repair proteins XRCC4 and IFFO1 to the DNA double-strand breaks (DSBs) to prevent chromosome translocation by immobilizing broken DNA ends

Note: This product is for in vitro research use only and is not intended for use in humans or animals.