

COMP Rabbit Polyclonal Antibody

Catalog No: #54184



Package Size: #54184-1 50ul #54184-2 100ul

Orders: order@signalwayantibody.comSupport: tech@signalwayantibody.com

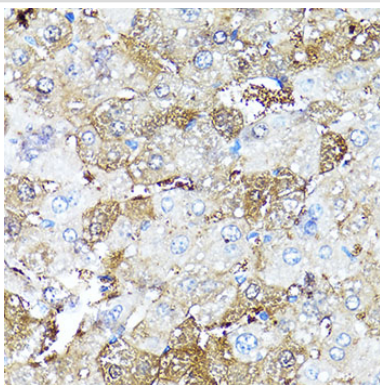
Description

Product Name	COMP Rabbit Polyclonal Antibody
Host Species	Rabbit
Clonality	Polyclonal
Isotype	IgG
Purification	Affinity purification
Applications	WB,IHC
Species Reactivity	Human;Mouse;Rat
Immunogen Description	Recombinant fusion protein of human COMP (NP_000086.2).
Conjugates	Unconjugated
Other Names	COMP;EDM1;EPD1;MED;PSACH;THBS5;TSP5
Accession No.	Swiss Prot:P49747GeneID:1311
Calculated MW	77kDa/82kDa
Formulation	Buffer: PBS with 0.02% sodium azide,50% glycerol,pH7.3.
Storage	Store at -20°C. Avoid freeze / thaw cycles.

Application Details

WB □ 1:500 - 1:2000 IHC □ 1:50 - 1:200

Images



Immunohistochemistry of paraffin-embedded mouse liver using COMP at dilution of 1:100 (40x lens).

Background

The protein encoded by this gene is a noncollagenous extracellular matrix (ECM) protein. It consists of five identical glycoprotein subunits, each with EGF-like and calcium-binding (thrombospondin-like) domains. Oligomerization results from formation of a five-stranded coiled coil and disulfides. Binding to other ECM proteins such as collagen appears to depend on divalent cations. Contraction or expansion of a 5 aa aspartate repeat and other mutations can cause pseudochondroplasia (PSACH) and multiple epiphyseal dysplasia (MED).

Note: This product is for in vitro research use only and is not intended for use in humans or animals.