

HEBP2 Rabbit Polyclonal Antibody

Catalog No: #54230

Package Size: #54230-1 50ul #54230-2 100ul

Orders: order@signalwayantibody.comSupport: tech@signalwayantibody.com

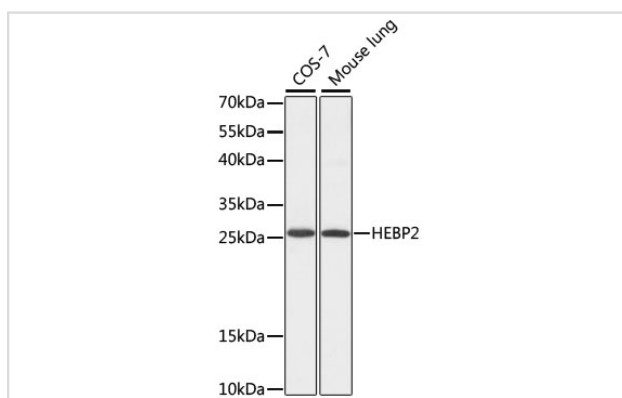
Description

Product Name	HEBP2 Rabbit Polyclonal Antibody
Host Species	Rabbit
Clonality	Polyclonal
Isotype	IgG
Purification	Affinity purification
Applications	WB,IHC,IF
Species Reactivity	Human;Mouse;Rat
Immunogen Description	Recombinant fusion protein of human HEBP2 (NP_055135.1).
Conjugates	Unconjugated
Other Names	HEBP2;C6ORF34B;C6orf34;PP23;SOUL
Accession No.	Swiss Prot:Q9Y5Z4GeneID:23593
Calculated MW	20kDa/22kDa
SDS-PAGE MW	25kDa
Formulation	Buffer: PBS with 0.02% sodium azide,50% glycerol,pH7.3.
Storage	Store at -20°C. Avoid freeze / thaw cycles.

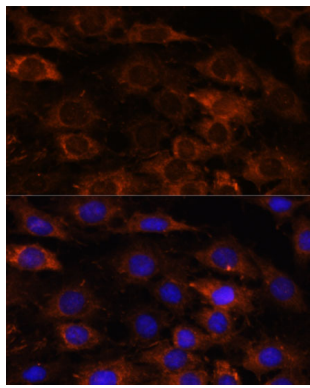
Application Details

WB □ 1:500 - 1:2000 IHC □ 1:50 - 1:200 IF □ 1:50 - 1:200

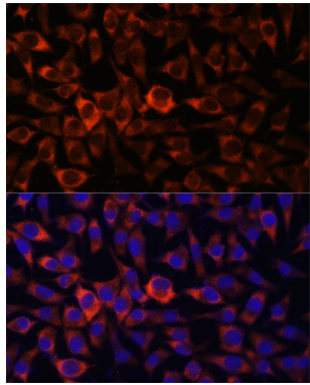
Images



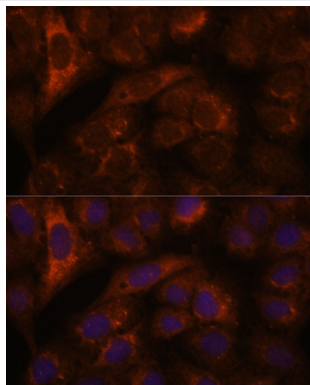
Western blot analysis of extracts of various cell lines, using HEBP2 at 1:1000 dilution.



Immunofluorescence analysis of C6 cells using HEBP2 at dilution of 1:100. Blue: DAPI for nuclear staining.



Immunofluorescence analysis of L929 cells using HEBP2 at dilution of 1:100. Blue: DAPI for nuclear staining.



Immunofluorescence analysis of U-2 OS cells using HEBP2 at dilution of 1:100. Blue: DAPI for nuclear staining.

Background

The protein encoded by this gene is found predominately in the cytoplasm, where it plays a role in the collapse of mitochondrial membrane potential (MMP) prior to necrotic cell death. The encoded protein enhances outer and inner mitochondrial membrane permeabilization, especially under conditions of oxidative stress.

Note: This product is for in vitro research use only and is not intended for use in humans or animals.