

## STAM2 Rabbit Polyclonal Antibody

Catalog No: #55100



Package Size: #55100-1 50ul #55100-2 100ul

Orders: [order@signalwayantibody.com](mailto:order@signalwayantibody.com)Support: [tech@signalwayantibody.com](mailto:tech@signalwayantibody.com)

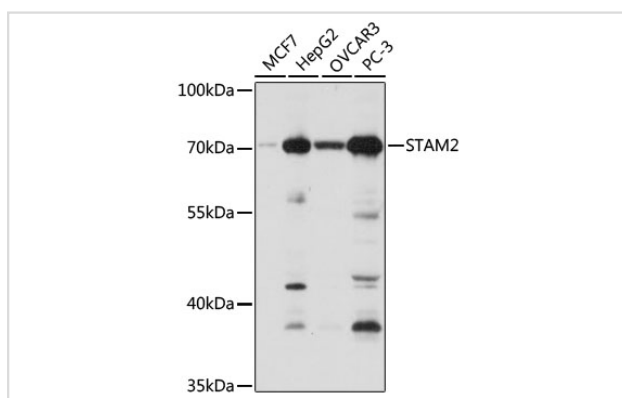
## Description

Product Name	STAM2 Rabbit Polyclonal Antibody
Host Species	Rabbit
Clonality	Polyclonal
Isotype	IgG
Purification	Affinity purification
Applications	WB,IF
Species Reactivity	Human;Mouse;Rat
Immunogen Description	Recombinant fusion protein of human STAM2 (NP_005834.4).
Conjugates	Unconjugated
Other Names	STAM2;Hbp;STAM2A;STAM2B
Accession No.	Swiss Prot:O75886GeneID:10254
Calculated MW	38kDa/58kDa
SDS-PAGE MW	70kDa
Formulation	Buffer: PBS with 0.02% sodium azide,50% glycerol,pH7.3.
Storage	Store at -20°C. Avoid freeze / thaw cycles.

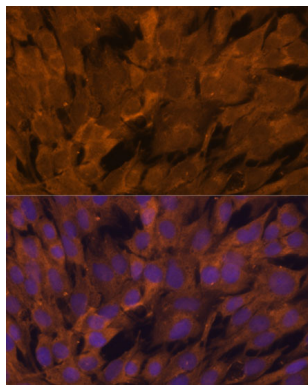
## Application Details

WB □ 1:500 - 1:2000 IF □ 1:50 - 1:100

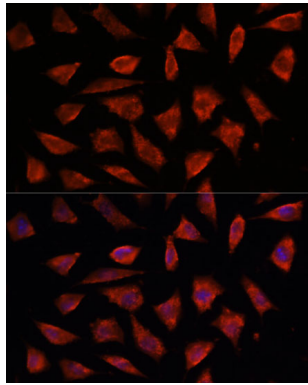
## Images



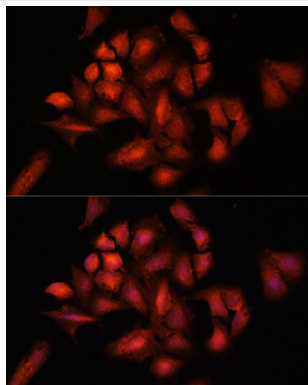
Western blot analysis of extracts of various cell lines, using STAM2 at 1:1000 dilution.



Immunofluorescence analysis of C6 cells using STAM2 at dilution of 1:100. Blue: DAPI for nuclear staining.



Immunofluorescence analysis of L929 cells using STAM2 at dilution of 1:100. Blue: DAPI for nuclear staining.



Immunofluorescence analysis of U-2 OS cells using STAM2 at dilution of 1:100. Blue: DAPI for nuclear staining.

## Background

The protein encoded by this gene is closely related to STAM, an adaptor protein involved in the downstream signaling of cytokine receptors, both of which contain a SH3 domain and the immunoreceptor tyrosine-based activation motif (ITAM). Similar to STAM, this protein acts downstream of JAK kinases, and is phosphorylated in response to cytokine stimulation. This protein and STAM thus are thought to exhibit compensatory effects on the signaling pathway downstream of JAK kinases upon cytokine stimulation.

Note: This product is for in vitro research use only and is not intended for use in humans or animals.