

## CPI17 alpha Rabbit mAb

Catalog No: #56005



Package Size: #56005-1 50ul #56005-2 100ul

Orders: order@signalwayantibody.com

Support: tech@signalwayantibody.com

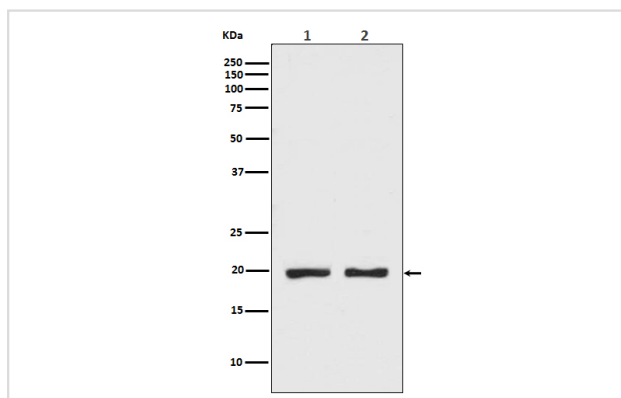
## Description

Product Name	CPI17 alpha Rabbit mAb
Host Species	Recombinant Rabbit
Clonality	Monoclonal
Isotype	Rabbit IgG
Purification	Affinity-chromatography
Applications	WB IP
Species Reactivity	Human;Mouse;Rat
Specificity	CPI17 alpha Antibody detects endogenous levels of total CPI17 alpha
Immunogen Description	A synthesized peptide derived from human CPI17 alpha
Conjugates	Unconjugated
Other Names	CPI17; PKC-potentiating inhibitory protein of PP1; PP14A; PPP1INL; PPP1R14A;
Accession No.	Uniprot:Q96A00
Calculated MW	17kDa
Formulation	Rabbit IgG in phosphate buffered saline , pH 7.4, 150mM NaCl, 0.02% sodium azide and 50% glycerol.
Storage	Store at +4°C short term. Store at -20°C long term. Avoid freeze / thaw cycle.

## Application Details

WB: 1:500~1:2000 IP: 1:30

## Images



Western blot analysis of CPI17 alpha expression in (1) MCF7 cell lysate; (2) 293T cell lysate.

## Product Description

CPI17 alpha a phosphorylation-dependent inhibitory subunit of protein phosphatase 1 (PP-1A). Phosphorylation by PKC regulates its binding to PP-1A. Acts co-operatively to inhibit myosin light chain phosphatase (MLCP) activity.

## Published Papers

---

Qing Yang;XiaoFeng Zhang;David Van Goor;Ashleigh P. Dunn;Callen Hyland;Nelson Medeiros;Paul Forscher et al., Protein kinase C activation decreases peripheral actin network density and increases central nonmuscle myosin II contractility in neuronal growth cones, , (2013)

[PMID:23966465](#)

---

---

Note: This product is for in vitro research use only and is not intended for use in humans or animals.