

## p21 Rabbit mAb

Catalog No: #56088

Package Size: #56088-1 50ul #56088-2 100ul

Orders: [order@signalwayantibody.com](mailto:order@signalwayantibody.com)Support: [tech@signalwayantibody.com](mailto:tech@signalwayantibody.com)

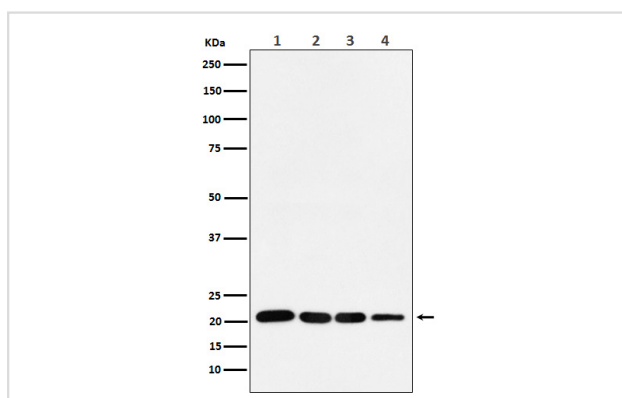
## Description

Product Name	p21 Rabbit mAb
Host Species	Recombinant Rabbit
Clonality	Monoclonal
Isotype	Rabbit IgG
Purification	Affinity-chromatography
Applications	WB ICC/IF
Species Reactivity	Human;Mouse;Rat
Specificity	p21 Antibody detects endogenous levels of total p21
Immunogen Description	A synthesized peptide derived from human p21
Conjugates	Unconjugated
Other Names	CAP20; CDKN1; CIP1; MDA-6; P21; SDI1; WAF1; p21CIP1
Accession No.	Uniprot:P38936
Calculated MW	21kDa
Formulation	Rabbit IgG in phosphate buffered saline , pH 7.4, 150mM NaCl, 0.02% sodium azide and 50% glycerol.
Storage	Store at +4°C short term. Store at -20°C long term. Avoid freeze / thaw cycle.

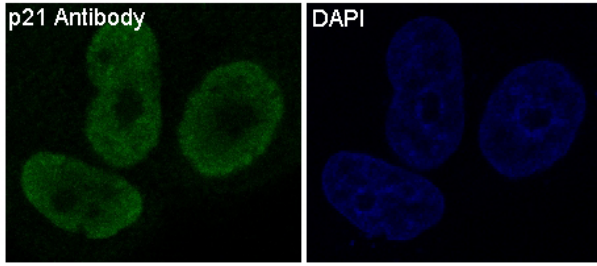
## Application Details

WB: 1:500~1:2000 ICC/IF: 1:50~1:200

## Images



Western blot analysis of p21 in (1) MCF-7 cell lysate; (2) HeLa cell lysate. (3) LnCap cell lysate; (4) U87 MG cell lysate.



Immunofluorescent analysis of MCF7 cells, using p21 Antibody.

## Product Description

The tumor suppressor protein p21 Waf1/Cip1 acts as an inhibitor of cell cycle progression. It functions in stoichiometric relationships forming heterotrimeric complexes with cyclins and cyclin-dependent kinases. In association with CDK2 complexes, it serves to inhibit kinase activity and block progression through G1/S. However, p21 may also enhance assembly and activity in complexes of CDK4 or CDK6 and cyclin D.

## Published Papers

Zhang Weilin, Liu Kuize, Li Zhencong, Feng Dao, Zhou Boyuan, Zhao Wei, Huang Shengbang, Dai Zhiwen, Liang Jinguo, Chen Siyuan, Wei Yen, Wei Jinsong et al., Polyethylene microplastics transported to nucleus pulposus cells via macrophages-derived exosomes, and promote intervertebral disc degeneration through  $\beta$   $\beta$   $\beta$ , *Ecotoxicology and Environmental Safety*, (2025)

[PMID:41175705](#)

**Note:** This product is for in vitro research use only and is not intended for use in humans or animals.