

Clathrin heavy chain Rabbit mAb

Catalog No: #56165



Package Size: #56165-1 50ul #56165-2 100ul

Orders: order@signalwayantibody.com

Support: tech@signalwayantibody.com

Description

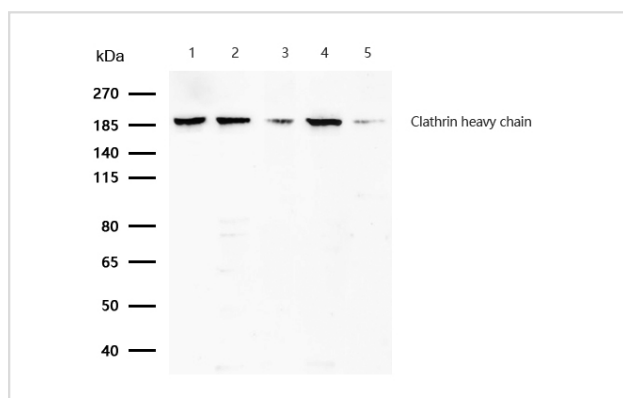
Product Name	Clathrin heavy chain Rabbit mAb
Host Species	Recombinant Rabbit
Clonality	Monoclonal
Isotype	Rabbit IgG
Purification	Affinity-chromatography
Applications	WB IHC ICC/IF
Species Reactivity	Human;Mouse;Rat
Specificity	Clathrin heavy chain Antibody detects endogenous levels of total Clathrin heavy chain
Immunogen Description	A synthesized peptide derived from human Clathrin heavy chain
Conjugates	Unconjugated
Other Names	CHC17; Clathrin heavy chain; Clathrin heavy chain like 1; CLH17; CLH22; CLTC; CLTCL; CLTD;
Accession No.	Uniprot:Q00610/P53675
Calculated MW	187,192kDa
SDS-PAGE MW	192kDa
Formulation	Rabbit IgG in phosphate buffered saline , pH 7.4, 150mM NaCl, 0.02% sodium azide and 50% glycerol.
Storage	Store at +4°C short term. Store at -20°C long term. Avoid freeze / thaw cycle.

Application Details

WB:1:1000~1:5000

IHC:1:50~1:200

Images



All lanes: Clathrin heavy chain Rabbit mAb at 1/1k dilution

Lane 1 : Hela whole cell lysates Lane 2 : 293 whole cell lysates Lane 3 : MCF7 whole cell lysates Lane 4 : Mouse brain lysates Lane 5 : Rat brain lysates

Lysates/proteins at 20 µg per lane.

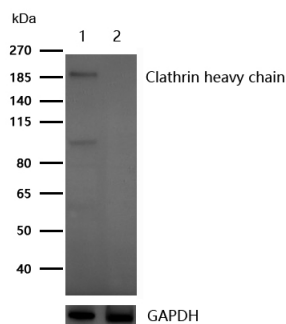
Secondary

All lanes : Goat Anti-Rabbit IgG H&L (HRP) at 1/20000 dilution

Predicted band size: 187,192 kDa

Observed band size: 192 kDa

Exposure time: 10 seconds

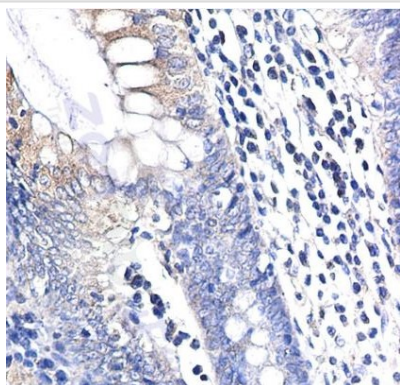


All lanes: Clathrin heavy chain Rabbit mAb at 1/1k dilution

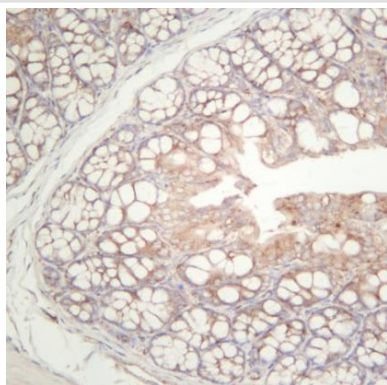
Lane 1 : Wild-type HeLa cell lysate

Lane 2 : Clathrin heavy chain knockdown HeLa cell lysate

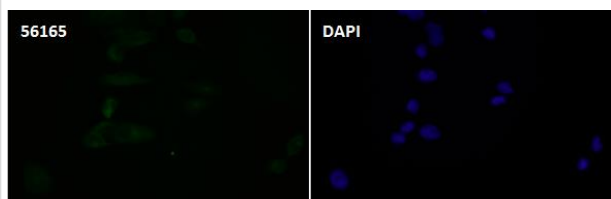
Lysates/proteins at 20 µg per lane.



Formalin-fixed, paraffin-embedded human colon tissue stained for Clathrin heavy chain using 56165 at 1/100 dilution in immunohistochemical analysis.



Formalin-fixed, paraffin-embedded mouse colon tissue stained for Clathrin heavy chain using 56165 at 1/100 dilution in immunohistochemical analysis.



Immunocytochemistry/ Immunofluorescence Clathrin heavy chain antibody (56165) ICC/IF staining of Clathrin heavy chain in HeLa cells. Cells were fixed with 4% Paraformaldehyde permeabilized with 0.1% Triton X-100.

Samples were incubated with 56165 at a working dilution of 1/100. The secondary antibody was Alexa FluorB 488 goat anti rabbit, used at a dilution of 1/500.

Nuclei were counterstained with DAPI.

Product Description

Clathrin heavy chain proteins are composed of several functional domains, including a carboxy-terminal region that permits interaction with other heavy chain proteins within a triskelion, and a globular amino-terminal region that associates with other vesicle proteins. Adaptor proteins, such as AP2, epsin and EPS15, are responsible for the recruitment of vesicle proteins to sites of pit formation and the assembly of the clathrin-coated vesicle.

Note: This product is for in vitro research use only and is not intended for use in humans or animals.