

CHD4 Rabbit mAb

Catalog No: #56169

Package Size: #56169-1 50ul #56169-2 100ul

Orders: order@signalwayantibody.comSupport: tech@signalwayantibody.com

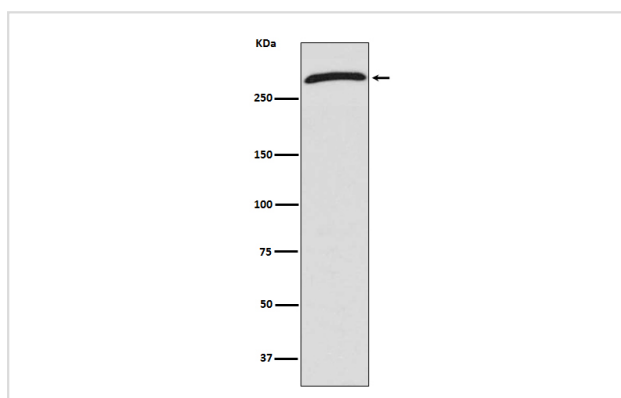
Description

| | |
|-----------------------|--|
| Product Name | CHD4 Rabbit mAb |
| Host Species | Recombinant Rabbit |
| Clonality | Monoclonal |
| Isotype | Rabbit IgG |
| Purification | Affinity-chromatography |
| Applications | WB ICC/IF |
| Species Reactivity | Human |
| Specificity | CHD4 Antibody detects endogenous levels of total CHD4 |
| Immunogen Description | A synthesized peptide derived from human CHD4 |
| Conjugates | Unconjugated |
| Other Names | ATP dependent helicase CHD4; CHD4; Chromodomain helicase DNA binding protein 4; Mi 2 autoantigen 218 kDa protein; Mi 2b; Mi2 beta; |
| Accession No. | Uniprot:Q14839 |
| Calculated MW | 218kDa |
| SDS-PAGE MW | 260kDa |
| Formulation | Rabbit IgG in phosphate buffered saline , pH 7.4, 150mM NaCl, 0.02% sodium azide and 50% glycerol. |
| Storage | Store at +4°C short term. Store at -20°C long term. Avoid freeze / thaw cycle. |

Application Details

WB:1:1000~1:5000|ICC/IF:1:50~1:200|FC:1:50

Images



Western blot analysis of CHD4 expression in 293T cell lysate.

Product Description

Component of the histone deacetylase NuRD complex which participates in the remodeling of chromatin by deacetylating histones.

Note: This product is for in vitro research use only and is not intended for use in humans or animals.