

xCT Rabbit mAb

Catalog No: #56243

Package Size: #56243-1 50ul #56243-2 100ul

Orders: order@signalwayantibody.com

Support: tech@signalwayantibody.com

Description

Product Name	xCT Rabbit mAb
Host Species	Recombinant Rabbit
Clonality	Monoclonal
Isotype	Rabbit IgG
Purification	Affinity-chromatography
Applications	WB, ICC/IF, IP
Species Reactivity	Human; Mouse; Rat
Specificity	xCT Antibody detects endogenous levels of total xCT
Immunogen Description	A synthesized peptide derived from human xCT
Conjugates	Unconjugated
Other Names	CCBR1; Cysteine/glutamate transporter; SLC7A11; solute carrier family 7; xCT;
Accession No.	Uniprot:Q9UPY5
Calculated MW	55kDa
Formulation	Rabbit IgG in phosphate buffered saline , pH 7.4, 150mM NaCl, 0.02% sodium azide and 50% glycerol.
Storage	Store at +4°C short term. Store at -20°C long term. Avoid freeze / thaw cycle.

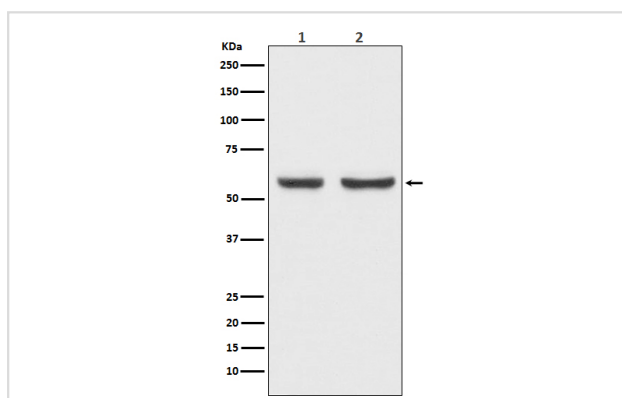
Application Details

WB 1:500~1:2000

ICC/IF 1:50~1:150

IP 1:50

Images



Western blot analysis of xCT expression in (1) HepG2 cell lysate; (2) Mouse brain lysate.

Product Description

Sodium-independent, high-affinity exchange of anionic amino acids with high specificity for anionic form of cystine and glutamate.

Published Papers

Zhang Weilin, Liu Kuize, Li Zhencong, Feng Dao, Zhou Boyuan, Zhao Wei, Huang Shengbang, Dai Zhiwen, Liang Jinguo, Chen Siyuan, Wei Yen, Wei Jinsong et al., Polyethylene microplastics transported to nucleus pulposus cells via macrophages-derived exosomes, and promote intervertebral disc degeneration through β β β , *Ecotoxicology and Environmental Safety*, (2025)

[PMID:41175705](#)

Note: This product is for in vitro research use only and is not intended for use in humans or animals.