

Dynamin 1 Rabbit mAb

Catalog No: #56249



Package Size: #56249-1 50ul #56249-2 100ul

Orders: order@signalwayantibody.comSupport: tech@signalwayantibody.com

Description

| | |
|-----------------------|--|
| Product Name | Dynamin 1 Rabbit mAb |
| Host Species | Recombinant Rabbit |
| Clonality | Monoclonal |
| Isotype | Rabbit IgG |
| Purification | Affinity-chromatography |
| Applications | WB IHC ICC/IF |
| Species Reactivity | Human;Mouse;Rat |
| Specificity | Dynamin 1 Antibody detects endogenous levels of total Dynamin 1 |
| Immunogen Description | A synthesized peptide derived from human Dynamin 1 |
| Conjugates | Unconjugated |
| Other Names | B dynamin; D100; DNM 1; DNM1; Dynamin; Dynamin1; |
| Accession No. | Uniprot:Q05193 |
| Calculated MW | 97kDa |
| SDS-PAGE MW | 97kDa |
| Formulation | Rabbit IgG in phosphate buffered saline , pH 7.4, 150mM NaCl, 0.02% sodium azide and 50% glycerol. |
| Storage | Store at +4°C short term. Store at -20°C long term. Avoid freeze / thaw cycle. |

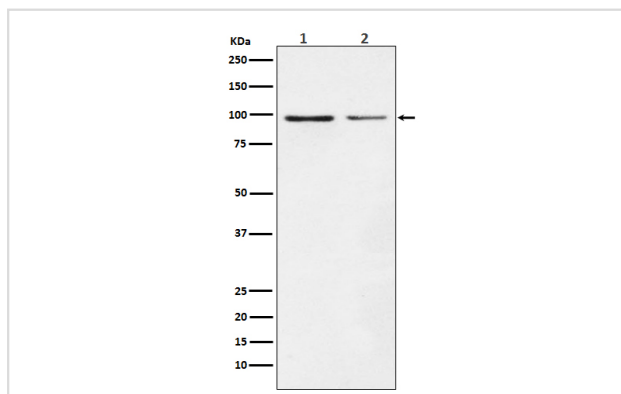
Application Details

WB:1:500~1:2000

IHC:1:50~1:200

ICC/IF:1:50~1:200

Images



Western blot analysis of Dynamin 1 expression in (1) SH-SY5Y cell lysate; (2) NIH/3T3 cell lysate.

Product Description

Microtubule-associated force-producing protein involved in producing microtubule bundles and able to bind and hydrolyze GTP. Most probably

involved in vesicular trafficking processes. Involved in receptor-mediated endocytosis.

Note: This product is for in vitro research use only and is not intended for use in humans or animals.