

Aspartate Aminotransferase Rabbit mAb

Catalog No: #56284



Package Size: #56284-1 50ul #56284-2 100ul

Orders: order@signalwayantibody.com

Support: tech@signalwayantibody.com

Description

Product Name	Aspartate Aminotransferase Rabbit mAb
Host Species	Recombinant Rabbit
Clonality	Monoclonal
Isotype	Rabbit IgG
Purification	Affinity-chromatography
Applications	WB;IHC;IF
Species Reactivity	Human;Mouse;Rat
Specificity	Aspartate Aminotransferase Antibody detects endogenous levels of total Aspartate Aminotransferase
Immunogen Description	A synthesized peptide derived from human Aspartate Aminotransferase
Conjugates	Unconjugated
Other Names	Aspartate aminotransferase 1; ASTQTL1; cAspAT; cCAT; GIG18; Glutamate oxaloacetate transaminase 1; GOT1; Growth inhibiting protein 18; SGOT; Transaminase A;
Accession No.	P17174
Calculated MW	46 kDa
SDS-PAGE MW	41 kDa
Formulation	Rabbit IgG in phosphate buffered saline , pH 7.4, 150mM NaCl, 0.02% sodium azide and 50% glycerol.
Storage	Store at +4°C short term. Store at -20°C long term. Avoid freeze / thaw cycle.

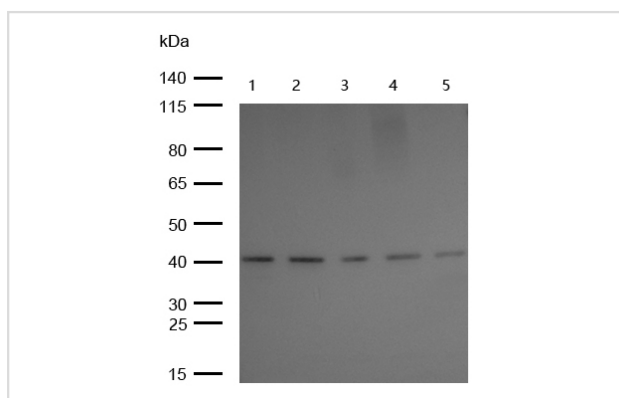
Application Details

WB:1:500~1:2000

IHC:1:50~1:200

IF:1:50~1:200

Images



All lanes : Aspartate Aminotransferase Rabbit mAb at 1/1k dilution

Lane 1 : Hela whole cell lysates
 Lane 2 : MCF7 whole cell lysates
 Lane 3 : HepG2 whole cell lysates
 Lane 4 : K562 whole cell lysates
 Lane 5 : Raw264.7 whole cell lysates

Lysates/proteins at 20 µg per lane.

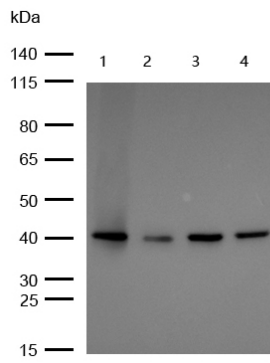
Secondary

All lanes : Goat Anti-Rabbit IgG H&L (HRP) at 1/20000 dilution

Predicted band size: 46 kDa

Observed band size: 41 kDa

Exposure time: 10 seconds



All lanes : Aspartate Aminotransferase Rabbit mAb at 1/1k dilution

Lane 1 : Mouse Brain lysates
 Lane 2 : Mouse Kidney lysates
 Lane 3 : Rat Brain lysates
 Lane 4 : Rat Kidney lysates

Lysates/proteins at 20 µg per lane.

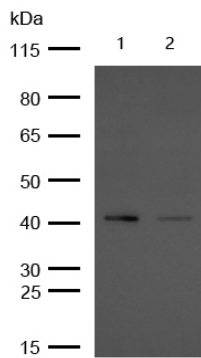
Secondary

All lanes : Goat Anti-Rabbit IgG H&L (HRP) at 1/20000 dilution

Predicted band size: 46 kDa

Observed band size: 41 kDa

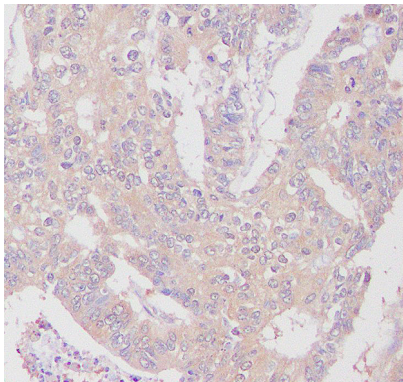
Exposure time: 5 seconds



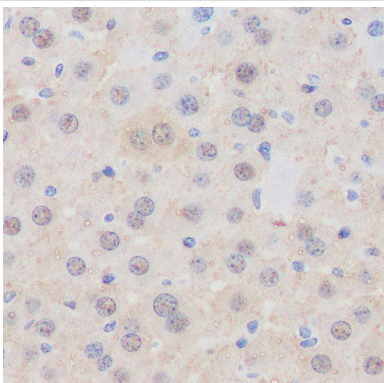
All lanes : Aspartate Aminotransferase Rabbit mAb at 1/1k dilution

Lane 1 : Wild-type HeLa cell lysate
 Lane 2 : Aspartate Aminotransferase knockdown HeLa cell lysate

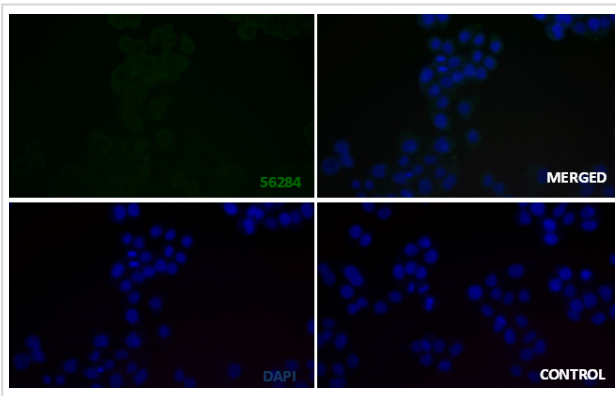
Lysates/proteins at 20 µg per lane.



Formalin-fixed, paraffin-embedded human colon carcinoma tissue stained for Aspartate Aminotransferase using 56284 at 1/100 dilution in immunohistochemical analysis.



Formalin-fixed, paraffin-embedded mouse liver tissue stained for Aspartate Aminotransferase using 56284 at 1/100 dilution in immunohistochemical analysis.



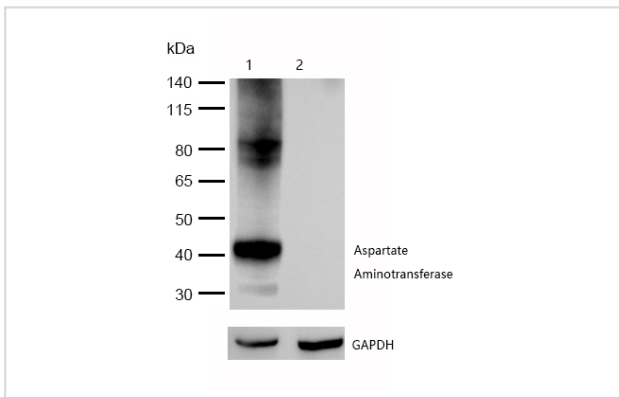
Immunocytochemistry/ Immunofluorescence Aspartate Aminotransferase antibody (56284)

56284 staining Aspartate Aminotransferase in the HeLa cell line by ICC/IF. Cells were fixed with 4% Paraformaldehyde permeabilized with 0.1% Triton X-100.

Samples were incubated with 56284 at a working dilution of 1/100. The secondary antibody was Alexa FluorB 488 goat anti rabbit, used at a dilution of 1/500.

The negative control is shown in bottom right hand panel - for the negative control, purified 56284 was used at a dilution of 1/100 followed by Alexa FluorB 647 goat anti- rabbit antibody at a dilution of 1/500.

Nuclei were counterstained with DAPI.



All lanes :Aspartate Aminotransferase Rabbit mAb at 1/1k dilution Lane 1 : Wild-type HAP1 cell lysate Lane 2 : Aspartate Aminotransferase knockdown HAP1 cell lysate Lysates/proteins at 20 µg per lane.

Product Description

Plays a key role in amino acid metabolism.

Note: This product is for in vitro research use only and is not intended for use in humans or animals.