

## SHC Rabbit mAb

Catalog No: #56293

Package Size: #56293-1 50ul #56293-2 100ul

Orders: order@signalwayantibody.com

Support: tech@signalwayantibody.com

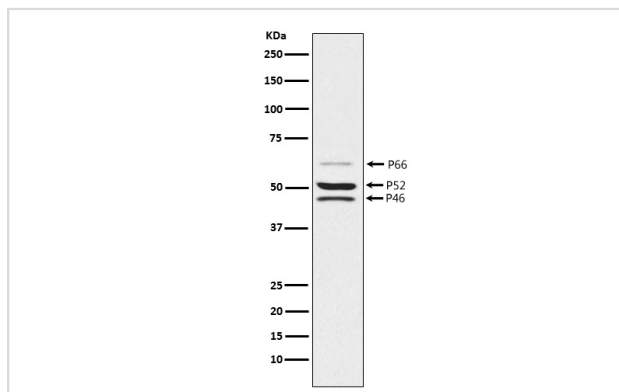
## Description

Product Name	SHC Rabbit mAb
Host Species	Recombinant Rabbit
Clonality	Monoclonal
Isotype	Rabbit IgG
Purification	Affinity-chromatography
Applications	WB IHC ICC/IF FC
Species Reactivity	Human;Mouse;Rat
Specificity	SHC Antibody detects endogenous levels of total SHC
Immunogen Description	A synthesized peptide derived from human SHC
Conjugates	Unconjugated
Other Names	SH2 domain protein C1; SHC; SHC-transforming protein 1; SHCA; Src homology 2 domain-containing-transforming protein C1;
Accession No.	Uniprot:P29353
Calculated MW	46, 52, 66kDa
Formulation	Rabbit IgG in phosphate buffered saline , pH 7.4, 150mM NaCl, 0.02% sodium azide and 50% glycerol.
Storage	Store at +4°C short term. Store at -20°C long term. Avoid freeze / thaw cycle.

## Application Details

WB:1:500~1:2000IHC:1:50~1:200ICC/IF:1:50~1:200FC:1:50

## Images



Western blot analysis of SHC expression in MCF7 cell lysate.

## Product Description

Signaling adapter that couples activated growth factor receptors to signaling pathways. Participates in a signaling cascade initiated by activated KIT and KITLG/SCF. Isoform p46Shc and isoform p52Shc, once phosphorylated, couple activated receptor tyrosine kinases to Ras via the recruitment of the GRB2/SOS complex and are implicated in the cytoplasmic propagation of mitogenic signals.

## Published Papers

---

Zeng Xi, Pang Suwen, Lu Hong, Zhu Jingchao, Li Ze, Liu Ni, Zhang Xifeng, Wang Yun, Wei Zhifeng et al., Aloperine ameliorates radiation enteritis by driving the TAS2R138-PLC $\beta$ /GAPDH axis-mediated glucose metabolic reprogramming to inhibit ferroptosis in intestinal B $\beta$ <sup>+</sup>, *Biochemical pharmacology*, (2025)

[PMID:40902734](#)

---

Note: This product is for in vitro research use only and is not intended for use in humans or animals.