

## PODXL Rabbit mAb

Catalog No: #56396



Package Size: #56396-1 50ul #56396-2 100ul

Orders: order@signalwayantibody.com

Support: tech@signalwayantibody.com

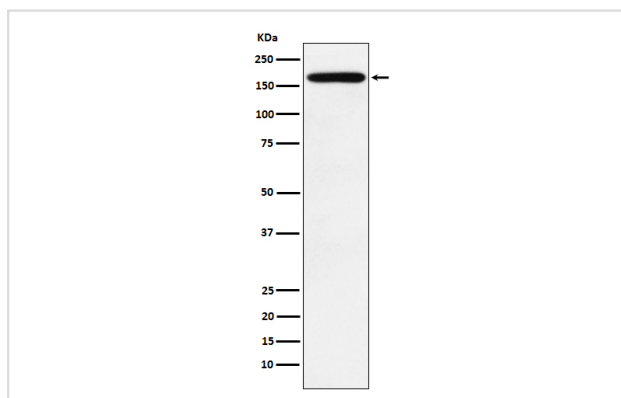
## Description

Product Name	PODXL Rabbit mAb
Host Species	Recombinant Rabbit
Clonality	Monoclonal
Isotype	Rabbit IgG
Purification	Affinity-chromatography
Applications	WB IHC ICC/IF IP FC
Species Reactivity	Human
Specificity	PODXL Antibody detects endogenous levels of total PODXL
Immunogen Description	A synthesized peptide derived from human PODXL
Conjugates	Unconjugated
Other Names	Gp2; Gp200; PC; PCLP; PCLP1; Pcx; Podocalyxin; Podocalyxin like; Podocalyxin-like protein 1; Podxl;
Accession No.	Uniprot:O00592
Calculated MW	165kDa
Formulation	Rabbit IgG in phosphate buffered saline , pH 7.4, 150mM NaCl, 0.02% sodium azide and 50% glycerol.
Storage	Store at +4°C short term. Store at -20°C long term. Avoid freeze / thaw cycle.

## Application Details

WB:1:500~1:2000IHC:1:50~1:200ICC/IF:1:100~1:500IP:1:50FC:1:100

## Images



Western blot analysis of PODXL expression in HeLa cell lysate.

## Product Description

Involved in the regulation of both adhesion and cell morphology and cancer progression. Function as an anti-adhesive molecule that maintains an open filtration pathway between neighboring foot processes in the podocyte by charge repulsion.

---

Note: This product is for in vitro research use only and is not intended for use in humans or animals.