

Eph receptor B1 Rabbit mAb

Catalog No: #56463



Package Size: #56463-1 50ul #56463-2 100ul

Orders: order@signalwayantibody.com

Support: tech@signalwayantibody.com

Description

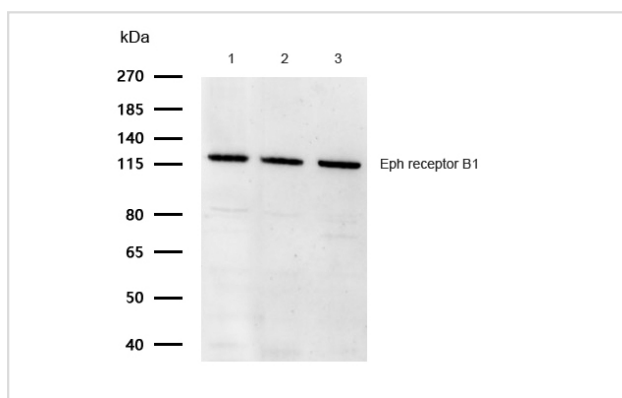
Product Name	Eph receptor B1 Rabbit mAb
Host Species	Recombinant Rabbit
Clonality	Monoclonal
Isotype	Rabbit IgG
Purification	Affinity-chromatography
Applications	WB
Species Reactivity	Human;Mouse;Rat
Specificity	Eph receptor B1 Antibody detects endogenous levels of total Eph receptor B1
Immunogen Description	A synthesized peptide derived from human Eph receptor B1
Conjugates	Unconjugated
Other Names	ELK; NET; Hek6; EPHT2; EPHB1;
Accession No.	Uniprot:P54762
Calculated MW	110kDa
SDS-PAGE MW	110kDa
Formulation	Rabbit IgG in phosphate buffered saline , pH 7.4, 150mM NaCl, 0.02% sodium azide and 50% glycerol.
Storage	Store at +4°C short term. Store at -20°C long term. Avoid freeze / thaw cycle.

Application Details

WB:1:500~1:2000

IP:1:50

Images



All lanes: Eph receptor B1 Rabbit mAb at 1/1k dilution

Lane 1 : U-87 MG whole cell lysates Lane 2 : Mouse brain lysates Lane 3 : Rat brain lysates

Lysates/proteins at 20 µg per lane.

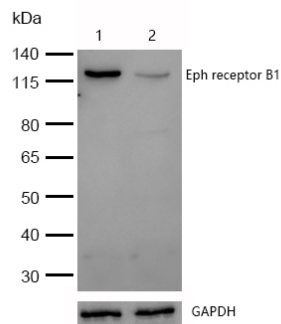
Secondary

All lanes : Goat Anti-Rabbit IgG H&L (HRP) at 1/20000 dilution

Predicted band size: 110 kDa

Observed band size: 110 kDa

Exposure time: 6 seconds



All lanes: Eph receptor B1 Rabbit mAb at 1/1k dilution

Lane 1 : Wild-type HeLa cell lysate

Lane 2 : Eph receptor B1 knockdown HeLa cell lysate

Lysates/proteins at 20 μ g per lane.

Product Description

Receptor for members of the ephrin-B family. Binds to ephrin-B1, -B2 and -B3. Binding with the guidance cue ephrin-B2 at the optic chiasm midline redirect ventrotemporal (VT) retinal ganglion cells (RGCs) axons ipsilaterally. May be involved in cell-cell interactions in the nervous system.

Note: This product is for in vitro research use only and is not intended for use in humans or animals.