

BMP6 Rabbit mAb

Catalog No: #56493



Package Size: #56493-1 50ul #56493-2 100ul

Orders: order@signalwayantibody.comSupport: tech@signalwayantibody.com

Description

Product Name	BMP6 Rabbit mAb
Host Species	Recombinant Rabbit
Clonality	Monoclonal
Isotype	Rabbit IgG
Purification	Affinity-chromatography
Applications	WB;IHC;IF
Species Reactivity	Human;Mouse;Rat
Specificity	BMP6 Antibody detects endogenous levels of total BMP6
Immunogen Description	A synthesized peptide derived from human BMP6
Conjugates	Unconjugated
Other Names	Bmp6; DVR6; VGR; VGR1;
Accession No.	P22004
Calculated MW	57 kDa
SDS-PAGE MW	42 kDa
Formulation	Rabbit IgG in phosphate buffered saline , pH 7.4, 150mM NaCl, 0.02% sodium azide and 50% glycerol.
Storage	Store at +4°C short term. Store at -20°C long term. Avoid freeze / thaw cycle.

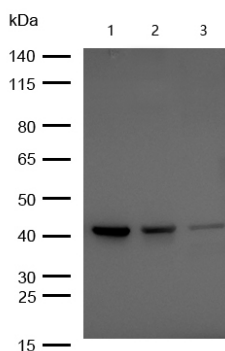
Application Details

WB:1:500~1:2000

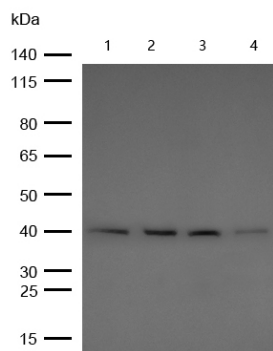
IHC:1:50~1:200

IF:1:50~1:200

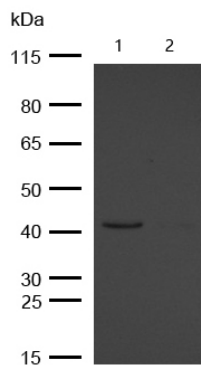
Images



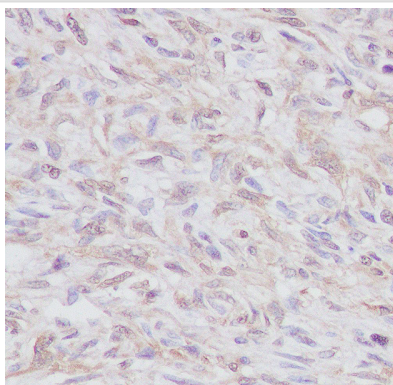
All lanes : BMP6 Rabbit mAb at 1/1k dilution Lane 1 : HUVEC whole cell lysates Lane 2 : 293T whole cell lysates Lane 3 : A549 whole cell lysates Lysates/proteins at 20 µg per lane. Secondary All lanes : Goat Anti-Rabbit IgG H&L (HRP) at 1/20000 dilution Predicted band size: 57 kDa Observed band size: 42 kDa Exposure time: 3 seconds



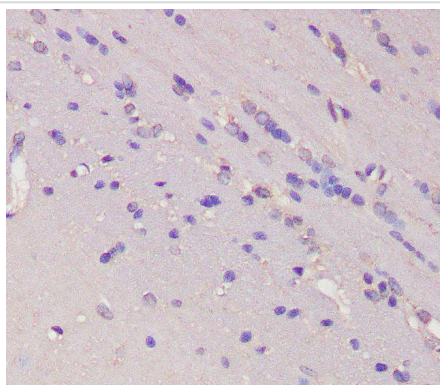
All lanes : BMP6 Rabbit mAb at 1/1k dilution Lane 1 : Mouse Lung lysates Lane 2 : Rat Brain lysates Lane 2 : Rat Kidney lysates Lane 3 : Rat Lung lysates Lysates/proteins at 20 μ g per lane. Secondary All lanes : Goat Anti-Rabbit IgG H&L (HRP) at 1/20000 dilution Predicted band size: 57 kDa Observed band size: 42 kDa Exposure time: 3 seconds



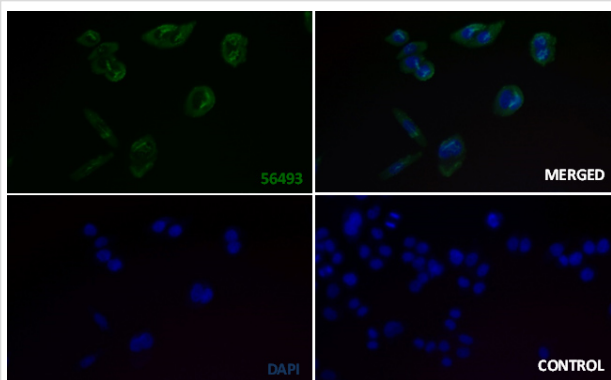
All lanes : BMP6 Rabbit mAb at 1/1k dilution Lane 1 : Wild-type HeLa cell lysate Lane 2 : BMP6 knockdown HeLa cell lysate Lysates/proteins at 20 μ g per lane.



Formalin-fixed, paraffin-embedded human breast carcinoma tissue stained for BMP6 using 56493 at 1/100 dilution in immunohistochemical analysis.



Formalin-fixed, paraffin-embedded rat brain tissue stained for BMP6 using 56493 at 1/100 dilution in immunohistochemical analysis.



Immunocytochemistry/ Immunofluorescence BMP6 antibody (56493) 56493 staining BMP6 in the HeLa cell line by ICC/IF. Cells were fixed with 4% Paraformaldehyde permeabilized with 0.1% Triton X-100. Samples were incubated with 56493 at a working dilution of 1/100. The secondary antibody was Alexa FluorB 488 goat anti rabbit, used at a dilution of 1/500. The negative control is shown in bottom right hand panel - for the negative control, purified 56493 was used at a dilution of 1/100 followed by Alexa FluorB 647 goat anti- rabbit antibody at a dilution of 1/500. Nuclei were counterstained with DAPI.

Product Description

Induces cartilage and bone formation.

Note: This product is for in vitro research use only and is not intended for use in humans or animals.