

## DLDH Rabbit mAb

Catalog No: #56779

Package Size: #56779-1 50ul #56779-2 100ul

Orders: order@signalwayantibody.com

Support: tech@signalwayantibody.com

## Description

Product Name	DLDH Rabbit mAb
Host Species	Recombinant Rabbit
Clonality	Monoclonal
Isotype	Rabbit IgG
Purification	Affinity-chromatography
Applications	WB IHC ICC/IF
Species Reactivity	Human;Mouse;Rat
Specificity	DLDH Antibody detects endogenous levels of total DLDH
Immunogen Description	A synthesized peptide derived from human DLDH
Conjugates	Unconjugated
Other Names	Diaphorase; Dihydrolipoamide dehydrogenase; DLDD; DLDH; GCSL; LAD; lipoamide dehydrogenase; Lipoamide reductase; Lipoyl dehydrogenase; PHE3;
Accession No.	Uniprot:P09622
Calculated MW	54kDa
SDS-PAGE MW	56kDa
Formulation	Rabbit IgG in phosphate buffered saline , pH 7.4, 150mM NaCl, 0.02% sodium azide and 50% glycerol.
Storage	Store at +4°C short term. Store at -20°C long term. Avoid freeze / thaw cycle.

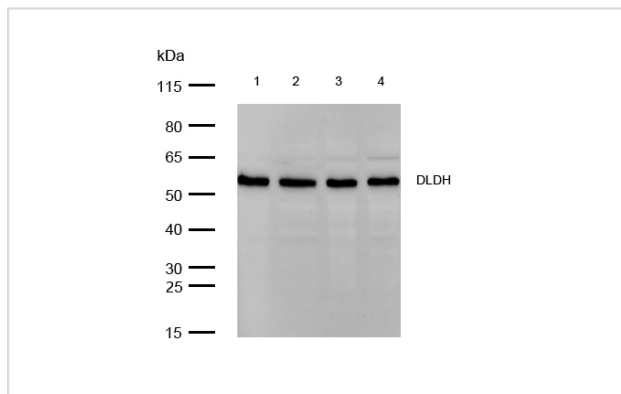
## Application Details

WB:1:500~1:2000

IHC:1:50~1:200

ICC/IF:1:50~1:200

## Images



All lanes: CSK Rabbit mAb at 1/1k dilution

Lane 1 : HeLa whole cell lysates  
 Lane 2 : JK whole cell lysates  
 Lane 3 : HepG2 whole cell lysates  
 Lane 4 : MCF7 whole cell lysates

Lysates/proteins at 20 µg per lane.

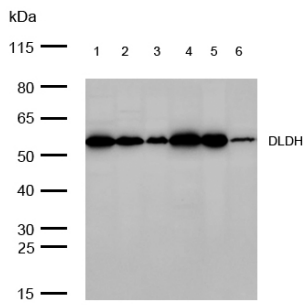
Secondary

All lanes : Goat Anti-Rabbit IgG H&amp;L (HRP) at 1/20000 dilution

Predicted band size: 54 kDa

Observed band size: 56 kDa

Exposure time: 4 seconds



All lanes: CSK Rabbit mAb at 1/1k dilution

Lane 1 : Mouse kidney lysates Lane 2 : Mouse brain lysates  
Lane 3 : Mouse skin lysates Lane 4 : Rat heart lysates Lane 5 : Rat liver lysates Lane 6 : Rat spleen lysates  
Lysates/proteins at 20 µg per lane.

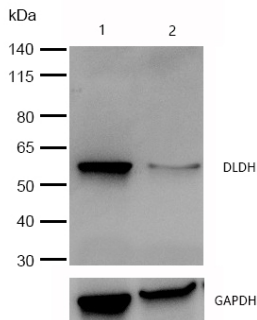
Secondary

All lanes : Goat Anti-Rabbit IgG H&L (HRP) at 1/20000 dilution

Predicted band size: 54 kDa

Observed band size: 56 kDa

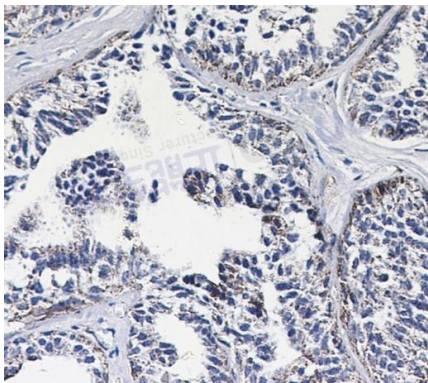
Exposure time: 9 seconds



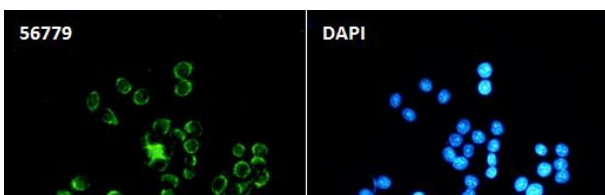
All lanes:DLDH Rabbit mAb at 1/1k dilution

Lane 1 : Wild-type HeLa cell lysate  
Lane 2 : DLDH knockdown HeLa cell lysate

Lysates/proteins at 20 µg per lane.



Formalin-fixed, paraffin-embedded human breast cancer tissue stained for DLDH using 56779 at 1/100 dilution in immunohistochemical analysis.



Immunocytochemistry/ Immunofluorescence DLDH antibody (56779)

ICC/IF staining of DLDH in HeLa cells. Cells were fixed with 4% Paraformaldehyde permeabilized with 0.1% Triton X-100.

Samples were incubated with 56779 at a working dilution of 1/100. The secondary antibody was Alexa FluorB 488 goat anti rabbit, used at a dilution of 1/500.

Nuclei were counterstained with DAPI.

## Product Description

Lipoamide dehydrogenase is a component of the glycine cleavage system as well as of the alpha-ketoacid dehydrogenase complexes. Involved in the hyperactivation of spermatazoa during capacitation and in the spermatazoal acrosome reaction.

## Published Papers

---

Tang XiYang, Zhang RunZe, Feng ZhiBo, Zhou YuLong, Du WeiGuang, Shu Chen, Shen Yang, Li MengChao, Cai JunChao, Yan XiaoLong, Ma Nan, Zhao JinBo et al., FGL1-mediated lymph node metastasis in stage T1 non-small cell lung cancer: therapeutic targeting, *Experimental Hematology & Oncology*, (2025)

[PMID:41024301](#)

---

Note: This product is for in vitro research use only and is not intended for use in humans or animals.