

## NAT10 Rabbit mAb

Catalog No: #56904

Package Size: #56904-1 50ul #56904-2 100ul

Orders: order@signalwayantibody.com

Support: tech@signalwayantibody.com

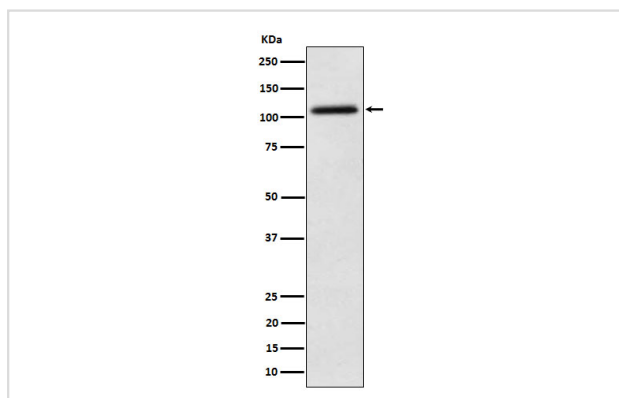
## Description

Product Name	NAT10 Rabbit mAb
Host Species	Recombinant Rabbit
Clonality	Monoclonal
Isotype	Rabbit IgG
Purification	Affinity-chromatography
Applications	WB IHC ICC/IF IP FC
Species Reactivity	Human;Mouse;Rat
Specificity	NAT10 Antibody detects endogenous levels of total NAT10
Immunogen Description	A synthesized peptide derived from human NAT10
Conjugates	Unconjugated
Other Names	ALP; hALP; N acetyltransferase like protein; NAT10; NET43;
Accession No.	Uniprot:Q9H0A0
Calculated MW	116kDa
Formulation	Rabbit IgG in phosphate buffered saline , pH 7.4, 150mM NaCl, 0.02% sodium azide and 50% glycerol.
Storage	Store at +4°C short term. Store at -20°C long term. Avoid freeze / thaw cycle.

## Application Details

WB:1:500~1:2000IHC:1:50~1:200ICC/IF:1:50~1:200IP:1:50FC:1:50

## Images



Western blot analysis of NAT10 expression in HeLa cell lysate.

## Product Description

Has protein acetyltransferase activity in vitro. Can acetylate both histones and microtubules. Histone acetylation may regulate transcription and mitotic chromosome de-condensation.

## Published Papers

---

Zhang Weilin, Liu Kuize, Li Zhencong, Feng Dao, Zhou Boyuan, Zhao Wei, Huang Shengbang, Dai Zhiwen, Liang Jinguo, Chen Siyuan, Wei Yen, Wei Jinsong et al., Polyethylene microplastics transported to nucleus pulposus cells via macrophages-derived exosomes, and promote intervertebral disc degeneration through  $\beta$   $\beta$   $\beta$ , *Ecotoxicology and Environmental Safety*, (2025)

[PMID:41175705](#)

---

Note: This product is for in vitro research use only and is not intended for use in humans or animals.