

PIM2 Rabbit mAb

Catalog No: #56914



Package Size: #56914-1 50ul #56914-2 100ul

Orders: order@signalwayantibody.comSupport: tech@signalwayantibody.com

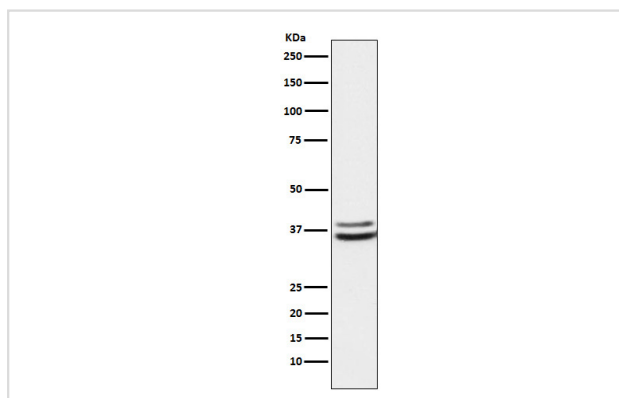
Description

Product Name	PIM2 Rabbit mAb
Host Species	Recombinant Rabbit
Clonality	Monoclonal
Isotype	Rabbit IgG
Purification	Affinity-chromatography
Applications	WB IP
Species Reactivity	Human;Mouse;Rat
Specificity	PIM2 Antibody detects endogenous levels of total PIM2
Immunogen Description	A synthesized peptide derived from PIM2
Conjugates	Unconjugated
Other Names	PIM2; Pim2h;
Accession No.	Uniprot:Q9P1W9
Calculated MW	34-44kDa
Formulation	Rabbit IgG in phosphate buffered saline , pH 7.4, 150mM NaCl, 0.02% sodium azide and 50% glycerol.
Storage	Store at +4°C short term. Store at -20°C long term. Avoid freeze / thaw cycle.

Application Details

WB: 1:500~1:2000 IP: 1:50

Images



Western blot analysis of PIM2 expression in K562 cell lysate.

Product Description

Promotes cell survival in response to a variety of proliferative signals via positive regulation of the I-kappaB kinase/NF-kappaB cascade; this process requires phosphorylation of MAP3K8/COT.

Published Papers

Ge Fan, Tian Fang, Zhu Yeyan, Yan Qixiang, Sun Qimeng, Lu Jun et al., Modified Xi-Jiao-Di-Huang Decoction Alleviates Sepsis via Regulating Macrophage Polarization by Inhibiting the PIM2/NF- κ B Pathway, Journal of inflammation research, (2025)

[PMID:40248592](#)

Note: This product is for in vitro research use only and is not intended for use in humans or animals.