

Semaphorin 4D / CD100 Rabbit mAb

Catalog No: #57048

Package Size: #57048-1 50ul #57048-2 100ul

Orders: order@signalwayantibody.comSupport: tech@signalwayantibody.com

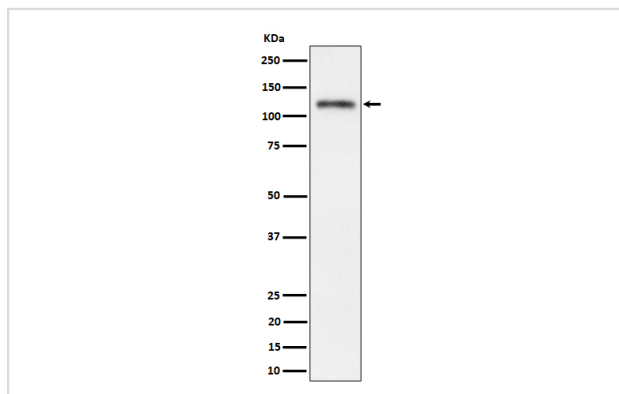
Description

Product Name	Semaphorin 4D / CD100 Rabbit mAb
Host Species	Recombinant Rabbit
Clonality	Monoclonal
Isotype	Rabbit IgG
Purification	Affinity-chromatography
Applications	WB IHC ICC/IF
Species Reactivity	Human
Specificity	Semaphorin 4D / CD100 Antibody detects endogenous levels of total Semaphorin 4D / CD100
Immunogen Description	A synthesized peptide derived from human Semaphorin 4D / CD100
Conjugates	Unconjugated
Other Names	BB18; CD100; COLL4; Collapsin 4; GR3; MSEMA; Sema4d; Semacl2; SemaH; SEMAJ; Semaphorin 4D; Semaphorin H; Semaphorin J; Semcl2;
Accession No.	Uniprot:Q92854
Calculated MW	120,140kDa
Formulation	Rabbit IgG in phosphate buffered saline , pH 7.4, 150mM NaCl, 0.02% sodium azide and 50% glycerol.
Storage	Store at +4°C short term. Store at -20°C long term. Avoid freeze / thaw cycle.

Application Details

WB:1:500~1:2000IHC:1:50~1:200ICC/IF:1:50~1:200

Images



Western blot analysis of Semaphorin 4D / CD100 expression in SH-SY5Y cell lysate.

Product Description

May play a functional role in the immune system, as well as in the nervous system. Induces B-cells to aggregate and improves their viability in vitro.

Published Papers

el at., Protection of Barrier Function in Cultured Human Corneal Epithelial Cells by Semaphorin 4DInCurr Eye ResOn2023 OctbyChengcheng Yang?1,?Yunzeping Li et al..PMID:?37395011, , (2023)

PMID:37395011

Note: This product is for in vitro research use only and is not intended for use in humans or animals.