

MKLP1 Rabbit mAb

Catalog No: #58517



Package Size: #58517-1 50ul #58517-2 100ul

Orders: order@signalwayantibody.com

Support: tech@signalwayantibody.com

Description

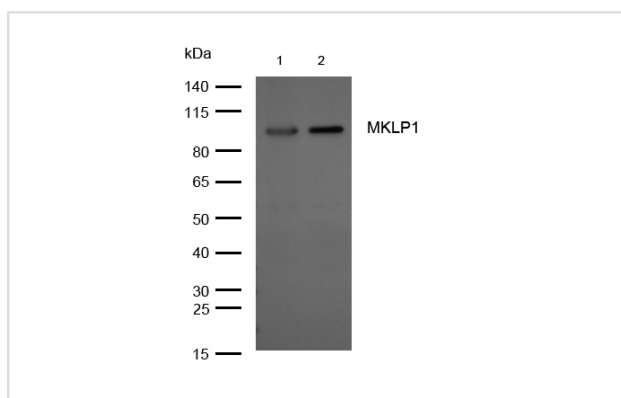
| | |
|--------------------|--|
| Product Name | MKLP1 Rabbit mAb |
| Host Species | Rabbit |
| Clonality | Monoclonal |
| Isotype | Rabbit IgG |
| Purification | Affinity-chromatography |
| Applications | WB;ICC/IF |
| Species Reactivity | Human Mouse Rat |
| Specificity | MKLP1 Antibody detects endogenous levels of total MKLP1 |
| Conjugates | Unconjugated |
| Other Names | CHO 1;CHO1;KIF 23;KIF23;;KNS L5;KNSL 5;KNSL5;Mitotic kinesin like 1;Mitotic kinesin like protein 1;MKLP 1; |
| Accession No. | Q02241 |
| Calculated MW | 110 kDa |
| SDS-PAGE MW | 98 kDa |
| Formulation | Rabbit IgG in phosphate buffered saline , pH 7.4, 150mM NaCl, 0.02% sodium azide and 50% glycerol. |
| Storage | Store at +4°C short term. Store at -20°C long term. Avoid freeze / thaw cycle. |

Application Details

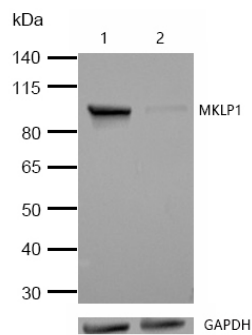
WB: 1:500-1:2000

ICC/IF: 1:50-1:200

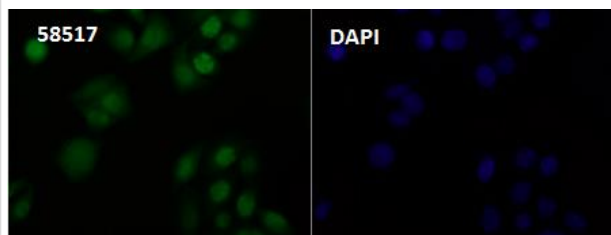
Images



All lanes: MKLP1 Rabbit mAb at 1/1k dilution
 Lane 1 : HeLa whole cell lysates
 Lane 2 : A549 whole cell lysates
 Lysates/proteins at 20 µg per lane.
 Secondary All lanes : Goat Anti-Rabbit IgG H&L (HRP) at 1/20000 dilution
 Predicted band size: 110 kDa
 Observed band size: 98 kDa
 Exposure time: 7 seconds



All lanes:MKLP1 Rabbit mAb at 1/1k dilution
 Lane 1 : Wild-type HeLa cell lysate
 Lane 2 : MKLP1 knockdown HeLa cell lysate
 Lysates/proteins at 20 µg per lane.



Immunocytochemistry/ Immunofluorescence MKLP1 antibody (58517) ICC/IF staining of MKLP1 in HeLa cells. Cells were fixed with 4% Paraformaldehyde permeabilized with 0.1% Triton X-100.

Samples were incubated with 58517 at a working dilution of 1/100. The secondary antibody was Alexa FluorB 488 goat anti rabbit, used at a dilution of 1/500.

Nuclei were counterstained with DAPI.

Note: This product is for in vitro research use only and is not intended for use in humans or animals.