

NF-κB (p105/p50) Rabbit mAb

Catalog No: #58548



Package Size: #58548-1 50ul #58548-2 100ul

Orders: order@signalwayantibody.com

Support: tech@signalwayantibody.com

Description

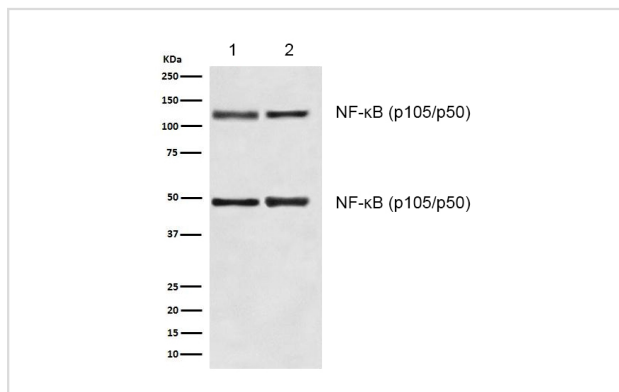
Product Name	NF-κB (p105/p50) Rabbit mAb
Host Species	Rabbit
Clonality	Monoclonal
Isotype	Rabbit IgG
Purification	Affinity-chromatography
Applications	WB;IHC
Species Reactivity	Human Mouse Rat
Specificity	NF-κB (p105/p50) Antibody detects endogenous levels of total NF-κB (p105/p50)
Conjugates	Unconjugated
Other Names	NF-kappa-B1; p84/NF-kappa-B1 p98; NFKB1; DNA-binding factor KBF1; EBP-1; NFKB-p50;
Accession No.	P19838
Calculated MW	50,120 kDa
SDS-PAGE MW	50,120 kDa
Formulation	Rabbit IgG in phosphate buffered saline , pH 7.4, 150mM NaCl, 0.02% sodium azide and 50% glycerol.
Storage	Store at +4°C short term. Store at -20°C long term. Avoid freeze / thaw cycle.

Application Details

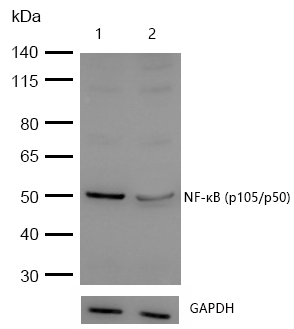
WB: 1:500-1:2000

IHC: 1:50-1:200

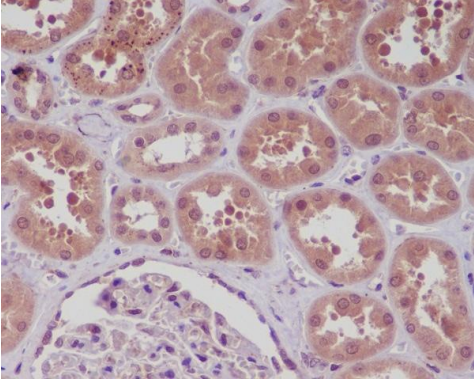
Images



All lanes: NF-κB (p105/p50) Rabbit mAb at 1/1k dilution
 Lane 1 : HeLa whole cell lysates
 Lane 2 : 3T3 whole cell lysates
 Lysates/proteins at 20 µg per lane.
 Secondary All lanes : Goat Anti-Rabbit IgG H&L (HRP) at 1/20000 dilution
 Predicted band size: 50,120 kDa
 Observed band size: 50,120 kDa
 Exposure time: 8 seconds



All lanes: NF- κ B (p105/p50) Rabbit mAb at 1/1k dilution
Lane 1 : Wild-type HCT116 cell lysate
Lane 2 : NF- κ B (p105/p50) knockdown HCT116 cell lysate
Lysates/proteins at 20 μ g per lane.



Formalin-fixed, paraffin-embedded human kidney tissue stained for NF- κ B (p105/p50) using 58548 at 1/100 dilution in immunohistochemical analysis.

Note: This product is for in vitro research use only and is not intended for use in humans or animals.