

EGFR (ErbB 1) Rabbit mAb

Catalog No: #58589



Package Size: #58589-1 50ul #58589-2 100ul

Orders: order@signalwayantibody.com

Support: tech@signalwayantibody.com

Description

Product Name	EGFR (ErbB 1) Rabbit mAb
Host Species	Rabbit
Clonality	Monoclonal
Isotype	Rabbit IgG
Purification	Affinity-chromatography
Applications	WB;IHC;ICC/IF
Species Reactivity	Human Mouse Rat
Specificity	EGFR α 0 ErbB 1 α 0 Antibody detects endogenous levels of total EGFR α 0 ErbB 1 α 0 Antibody
Conjugates	Unconjugated
Other Names	ERBB1; Epidermal growth factor receptor precursor; Receptor protein-tyrosine kinase ErbB-1; kinase EGFR;
Accession No.	P00533
Calculated MW	134 kDa
SDS-PAGE MW	134-180 kDa
Formulation	Rabbit IgG in phosphate buffered saline , pH 7.4, 150mM NaCl, 0.02% sodium azide and 50% glycerol.
Storage	Store at +4°C short term. Store at -20°C long term. Avoid freeze / thaw cycle.

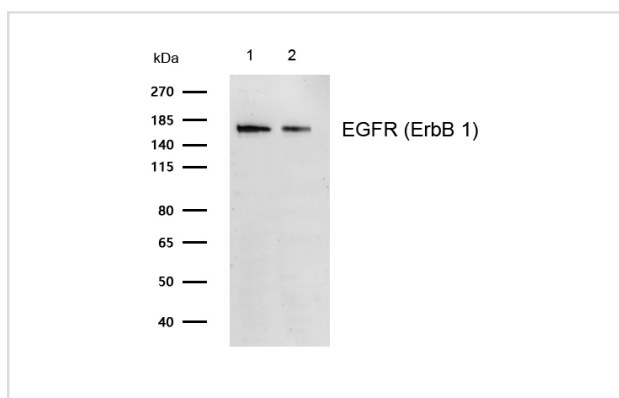
Application Details

WB: 1:500-1:2000

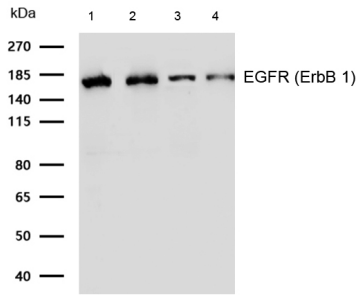
IHC: 1:50-1:200

ICC/IF: 1:50-1:200

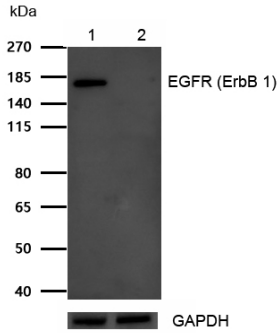
Images



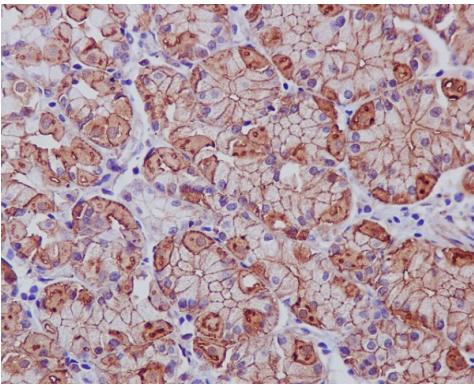
All lanes: EGFR (ErbB 1) Rabbit mAb at 1/1k dilution
 Lane 1 : HeLa whole cell lysates
 Lane 2 : 293 whole cell lysates
 Lysates/proteins at 20 μ g per lane.
 Secondary All lanes : Goat Anti-Rabbit IgG H&L (HRP) at 1/20000 dilution
 Predicted band size: 134 kDa
 Observed band size: 134-180 kDa
 Exposure time: 7 seconds



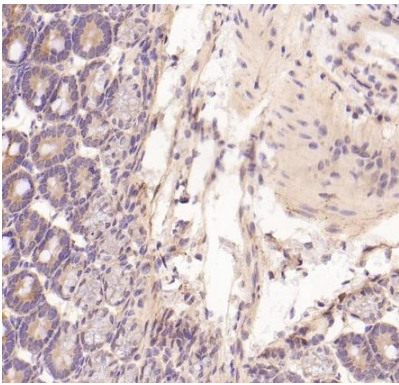
All lanes: EGFR (ErbB 1) Rabbit mAb at 1/1k dilution
 Lane 1 : Mouse lung lysates
 Lane 2 : Mouse brain lysates
 Lane 3 : Rat lung lysates
 Lane 4 : Rat heart lysates
 Lysates/proteins at 20 µg per lane.
 Secondary All lanes : Goat Anti-Rabbit IgG H&L (HRP) at 1/20000 dilution
 Predicted band size: 134 kDa
 Observed band size: 134-180 kDa
 Exposure time: 8 seconds



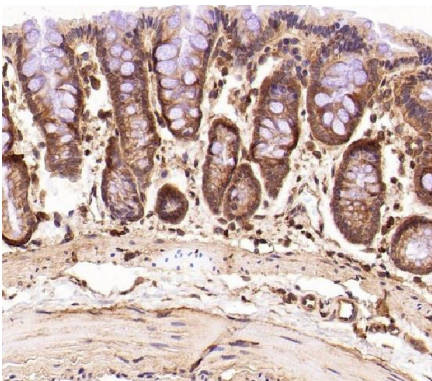
All lanes: EGFR (ErbB 1) Rabbit mAb at 1/1k dilution
 Lane 1 : Wild-type HeLa cell lysate
 Lane 2 : EGFR (ErbB 1) knockdown HeLa cell lysate
 Lysates/proteins at 20 µg per lane.



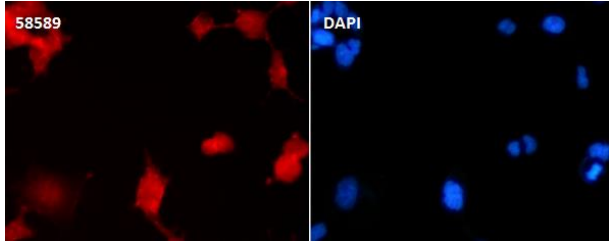
Formalin-fixed, paraffin-embedded human stomach cancer tissue stained for EGFR (ErbB 1) using 58589 at 1/100 dilution in immunohistochemical analysis.



Formalin-fixed, paraffin-embedded mouse intestine tissue stained for EGFR (ErbB 1) using 58589 at 1/100 dilution in immunohistochemical analysis.



Formalin-fixed, paraffin-embedded rat stomach tissue stained for EGFR (ErbB 1) using 58589 at 1/100 dilution in immunohistochemical analysis.



Immunocytochemistry/ Immunofluorescence EGFR (ErbB 1) antibody (58589) ICC/IF staining of EGFR (ErbB 1) in 293T cells. Cells were fixed with 4% Paraformaldehyde permeabilized with 0.1% Triton X-100.

Samples were incubated with 58589 at a working dilution of 1/100. The secondary antibody was Alexa FluorB 647 goat anti rabbit, used at a dilution of 1/500.

Nuclei were counterstained with DAPI.

Note: This product is for in vitro research use only and is not intended for use in humans or animals.