

Glutamine Synthetase Rabbit mAb

Catalog No: #58720



Package Size: #58720-1 50ul #58720-2 100ul

Orders: order@signalwayantibody.com

Support: tech@signalwayantibody.com

Description

Product Name	Glutamine Synthetase Rabbit mAb
Host Species	Rabbit
Clonality	Monoclonal
Isotype	Rabbit IgG
Purification	Affinity-chromatography
Applications	WB;IHC;ICC/IF
Species Reactivity	Human Mouse Rat
Specificity	Glutamine Synthetase Antibody detects endogenous levels of total Glutamine Synthetase
Conjugates	Unconjugated
Other Names	GLNA; GS; GLUL; GLNS; PIG43 ; PIG59; Glutamine synthetase;
Accession No.	P15104
Calculated MW	42 kDa
SDS-PAGE MW	42 kDa
Formulation	Rabbit IgG in phosphate buffered saline , pH 7.4, 150mM NaCl, 0.02% sodium azide and 50% glycerol.
Storage	Store at +4°C short term. Store at -20°C long term. Avoid freeze / thaw cycle.

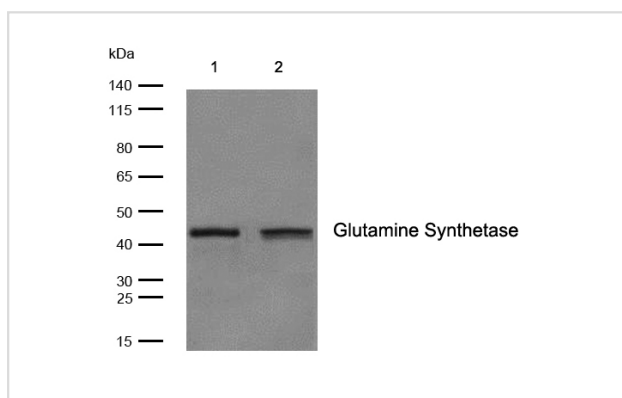
Application Details

WB: 1:500-1:2000

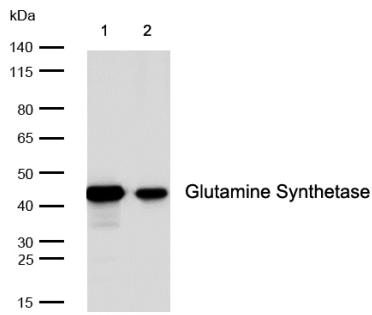
IHC: 1:50-1:200

ICC/IF: 1:50-1:200

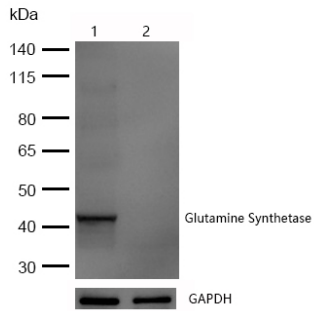
Images



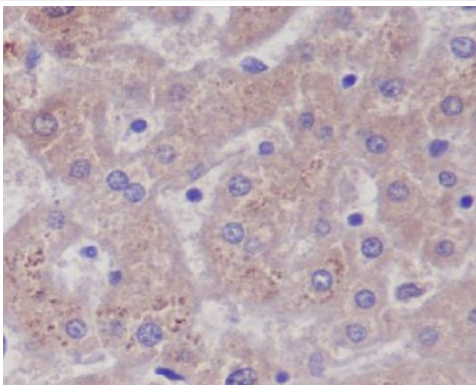
All lanes: Glutamine Synthetase Rabbit mAb at 1/1k dilution
 Lane 1 : JK whole cell lysates Lane 2 : HeLa whole cell lysates
 Lysates/proteins at 20 µg per lane. Secondary All lanes : Goat Anti-Rabbit IgG H&L (HRP) at 1/20000 dilution
 Predicted band size: 42 kDa Observed band size: 42 kDa
 Exposure time: 7 seconds



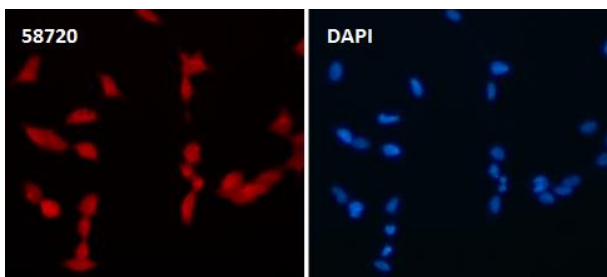
All lanes: Glutamine Synthetase Rabbit mAb at 1/1k dilution
 Lane 1 : Mouse liver lysates Lane 2 : Rat liver lysates
 Lysates/proteins at 20 µg per lane. Secondary All lanes : Goat Anti-Rabbit IgG H&L (HRP) at 1/20000 dilution
 Predicted band size: 42 kDa Observed band size: 42 kDa Exposure time: 5 seconds



All lanes: Glutamine Synthetase Rabbit mAb at 1/1k dilution
 Lane 1 : Wild-type HeLa cell lysate Lane 2 : Glutamine Synthetase knockdown HeLa cell lysate
 Lysates/proteins at 20 µg per lane.



Formalin-fixed, paraffin-embedded human liver tissue stained for Glutamine Synthetase using 58720 at 1/100 dilution in immunohistochemical analysis.



Immunocytochemistry/ Immunofluorescence Glutamine Synthetase antibody (58720) ICC/IF staining of Glutamine Synthetase in 293T cells. Cells were fixed with 4% Paraformaldehyde permeabilized with 0.1% Triton X-100.

Samples were incubated with 58720 at a working dilution of 1/100. The secondary antibody was Alexa FluorB 647 goat anti rabbit, used at a dilution of 1/500.

Nuclei were counterstained with DAPI.

Note: This product is for in vitro research use only and is not intended for use in humans or animals.