

AMPK alpha 1 Rabbit mAb

Catalog No: #58724

Package Size: #58724-1 50ul #58724-2 100ul

Orders: order@signalwayantibody.com

Support: tech@signalwayantibody.com

Description

Product Name	AMPK alpha 1 Rabbit mAb
Host Species	Rabbit
Clonality	Monoclonal
Isotype	Rabbit IgG
Purification	Affinity-chromatography
Applications	WB;IHC;ICC/IF
Species Reactivity	Human Mouse Rat
Specificity	AMPK alpha 1 Antibody detects endogenous levels of total AMPK alpha 1
Conjugates	Unconjugated
Other Names	AMP-activate kinase alpha 1 subunit; 5'-AMP-activated protein kinase catalytic subunit alpha-1; AAPK1; AMPK; SNF1A; HMGCR kinase; PRKAA1; cb116;
Accession No.	Q13131
Calculated MW	64 kDa
SDS-PAGE MW	64 kDa
Formulation	Rabbit IgG in phosphate buffered saline , pH 7.4, 150mM NaCl, 0.02% sodium azide and 50% glycerol.
Storage	Store at +4°C short term. Store at -20°C long term. Avoid freeze / thaw cycle.

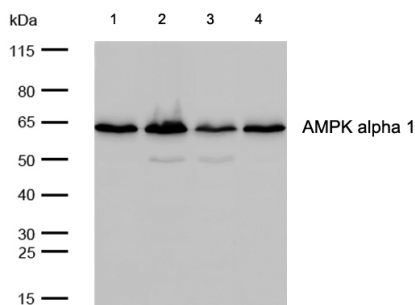
Application Details

WB: 1:500-1:2000

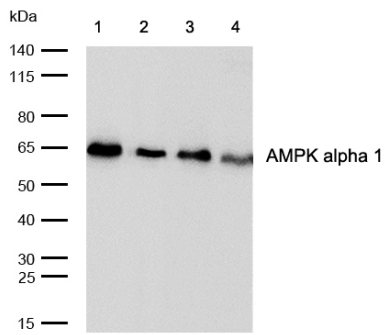
IHC: 1:50-1:200

ICC/IF: 1:50-1:200

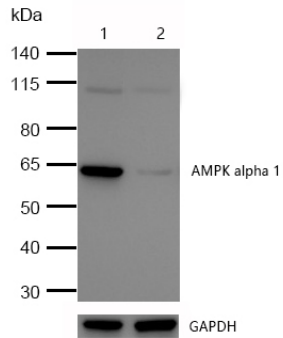
Images



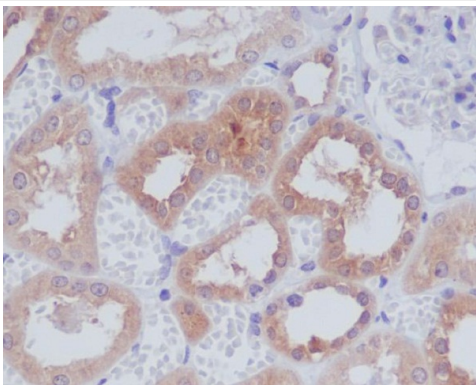
All lanes: AMPK alpha 1 Rabbit mAb at 1/1k dilution
 Lane 1 : HeLa whole cell lysates Lane 2 : JK whole cell lysates Lane 3 : HepG2 whole cell lysates Lane 4 : MCF-7 whole cell lysates
 Lysates/proteins at 20 µg per lane. Secondary All lanes : Goat Anti-Rabbit IgG H&L (HRP) at 1/20000 dilution
 Predicted band size: 64 kDa Observed band size: 64 kDa Exposure time: 2 seconds



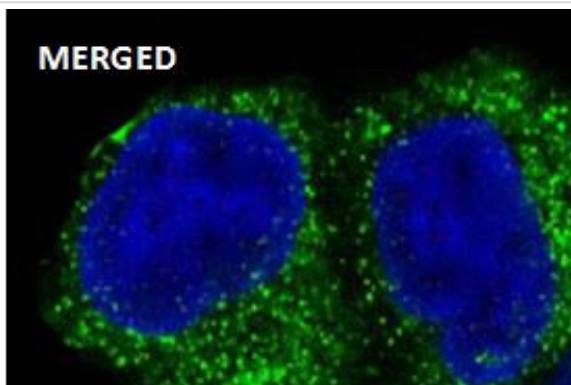
All lanes: AMPK alpha 1 Rabbit mAb at 1/1k dilution
 Lane 1 : Mouse kidney lysates
 Lane 2 : Mouse lung lysates
 Lane 3 : Rat kidney lysates
 Lane 4 : Rat lung lysates
 Lysates/proteins at 20 µg per lane.
 Secondary All lanes : Goat Anti-Rabbit IgG H&L (HRP) at 1/20000 dilution
 Predicted band size: 64 kDa
 Observed band size: 64 kDa
 Exposure time: 6 seconds



All lanes: AMPK alpha 1 Rabbit mAb at 1/1k dilution
 Lane 1 : Wild-type HeLa cell lysate
 Lane 2 : AMPK alpha 1 knockdown HeLa cell lysate
 Lysates/proteins at 20 µg per lane.



Formalin-fixed, paraffin-embedded human kidney tissue stained for AMPK alpha 1 using 58724 at 1/100 dilution in immunohistochemical analysis.



Immunocytochemistry/ Immunofluorescence AMPK alpha 1 antibody (58724) ICC/IF staining of AMPK alpha 1 in HeLa cells. Cells were fixed with 4% Paraformaldehyde permeabilized with 0.1% Triton X-100.

Samples were incubated with 58724 at a working dilution of 1/100. The secondary antibody was Alexa FluorB 488 goat anti rabbit, used at a dilution of 1/500.

Nuclei were counterstained with DAPI.

Note: This product is for in vitro research use only and is not intended for use in humans or animals.