

beta 2 Microglobulin Rabbit mAb

Catalog No: #58728



Package Size: #58728-1 50ul #58728-2 100ul

Orders: order@signalwayantibody.com

Support: tech@signalwayantibody.com

Description

Product Name	beta 2 Microglobulin Rabbit mAb
Host Species	Rabbit
Clonality	Monoclonal
Isotype	Rabbit IgG
Purification	Affinity-chromatography
Applications	WB;IHC;ICC/IF
Species Reactivity	Human Mouse Rat
Specificity	beta 2 Microglobulin Antibody detects endogenous levels of total beta 2 Microglobulin
Conjugates	Unconjugated
Other Names	B2MG; Beta 2 microglobin; Beta 2 microglobulin; Beta-2-microglobulin form pl 5.3; CDABP0092; Hdcma22p;
Accession No.	P61769
Calculated MW	14 kDa
SDS-PAGE MW	14 kDa
Formulation	Rabbit IgG in phosphate buffered saline , pH 7.4, 150mM NaCl, 0.02% sodium azide and 50% glycerol.
Storage	Store at +4°C short term. Store at -20°C long term. Avoid freeze / thaw cycle.

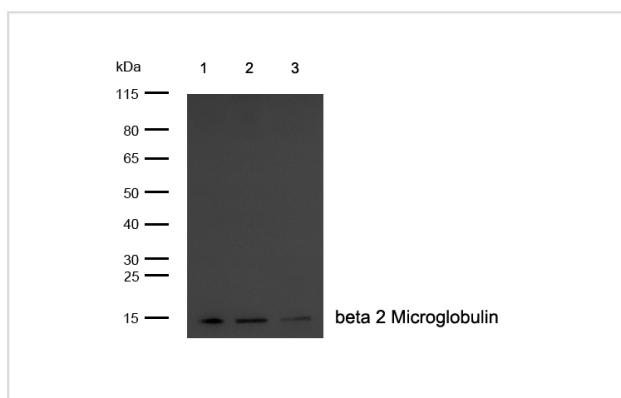
Application Details

WB: 1:500-1:2000

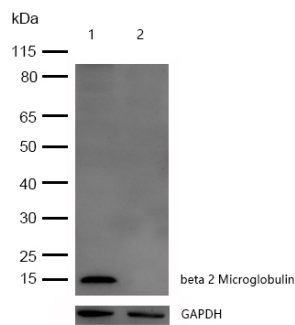
IHC: 1:50-1:200

ICC/IF: 1:50-1:200

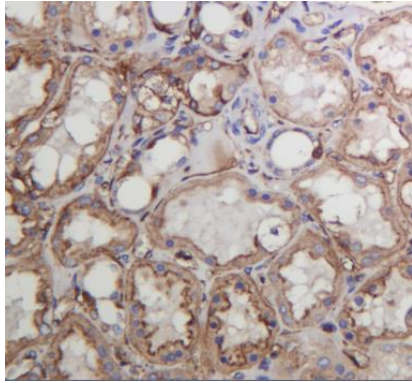
Images



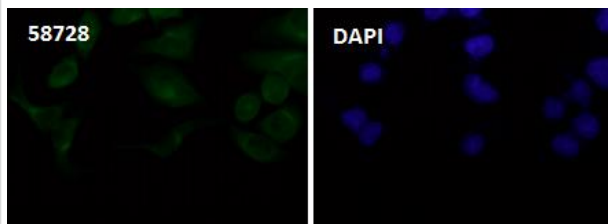
All lanes: beta 2 Microglobulin Rabbit mAb at 1/1k dilution
 Lane 1 : U937 whole cell lysates Lane 2 : Mouse skin lysates Lane 3 : Rat liver lysates
 Lysates/proteins at 20 µg per lane. Secondary All lanes : Goat Anti-Rabbit IgG H&L (HRP) at 1/20000 dilution
 Predicted band size: 14 kDa Observed band size: 14 kDa Exposure time: 9 seconds



All lanes :beta 2 Microglobulin Rabbit mAb at 1/1k dilution
 Lane 1 : Wild-type HAP1 cell lysate
 Lane 2 : beta 2 Microglobulin knockdown HAP1 cell lysate
 Lysates/proteins at 20 µg per lane.



Formalin-fixed, paraffin-embedded human kidney tissue stained for beta 2 Microglobulin using 58728 at 1/100 dilution in immunohistochemical analysis.



Immunocytochemistry/ Immunofluorescence beta 2 Microglobulin antibody (58728) ICC/IF staining of beta 2 Microglobulin in Hela cells. Cells were fixed with 4% Paraformaldehyde permeabilized with 0.1% Triton X-100.

Samples were incubated with 58728 at a working dilution of 1/100. The secondary antibody was Alexa FluorB 488 goat anti rabbit, used at a dilution of 1/500.

Nuclei were counterstained with DAPI.

Note: This product is for in vitro research use only and is not intended for use in humans or animals.