

Cathepsin D Rabbit mAb

Catalog No: #58732

Package Size: #58732-1 50ul #58732-2 100ul

Orders: order@signalwayantibody.comSupport: tech@signalwayantibody.com

Description

Product Name	Cathepsin D Rabbit mAb
Host Species	Rabbit
Clonality	Monoclonal
Isotype	Rabbit IgG
Purification	Affinity-chromatography
Applications	WB;IHC;ICC/IF
Species Reactivity	Human Mouse Rat
Specificity	Cathepsin D Antibody detects endogenous levels of total Cathepsin D
Conjugates	Unconjugated
Other Names	CATD; Cathepsin D; Cathepsin D heavy chain; Cathepsin D light chain; ceroid-lipofuscinosis, neuronal 10; CLN10; CPSD; CTSD; lysosomal aspartyl peptidase; lysosomal aspartyl protease; MGC2311
Accession No.	P07339
Calculated MW	45 kDa
SDS-PAGE MW	28,46 kDa
Formulation	Rabbit IgG in phosphate buffered saline , pH 7.4, 150mM NaCl, 0.02% sodium azide and 50% glycerol.
Storage	Store at +4°C short term. Store at -20°C long term. Avoid freeze / thaw cycle.

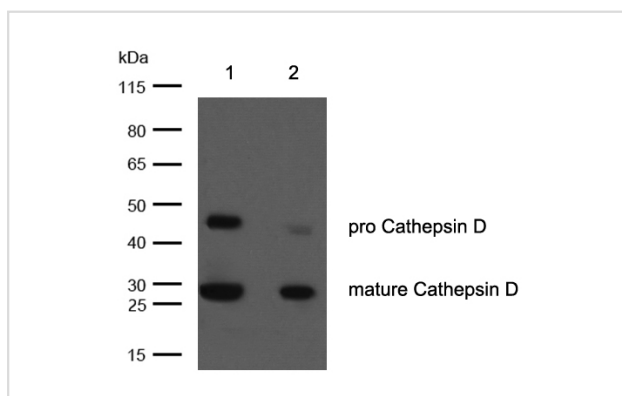
Application Details

WB: 1:500-1:2000

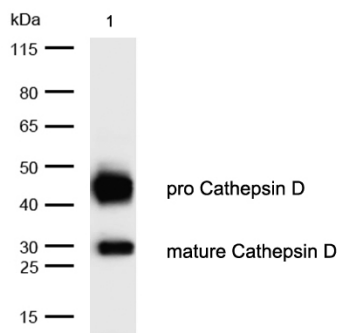
IHC: 1:50-1:200

ICC/IF: 1:50-1:200

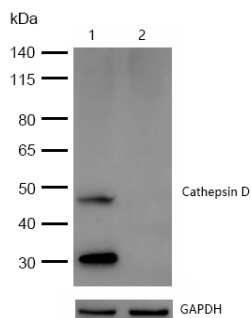
Images



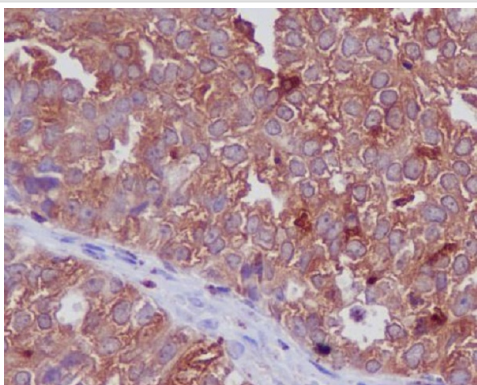
All lanes: Cathepsin D Rabbit mAb at 1/1k dilution
 Lane 1 : MCF-7 whole cell lysates
 Lane 2 : SKBR-3 whole cell lysates
 Lysates/proteins at 20 µg per lane.
 Secondary All lanes : Goat Anti-Rabbit IgG H&L (HRP) at 1/20000 dilution
 Predicted band size: 45 kDa
 Observed band size: 28,46 kDa
 Exposure time: 6 seconds



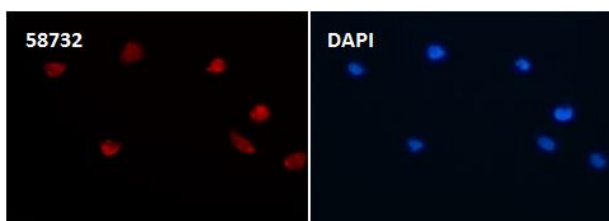
All lanes: Cathepsin D Rabbit mAb at 1/1k dilution
 Lane 1 : Mouse brain lysates Lysates/proteins at 20 µg per lane.
 Secondary All lanes : Goat Anti-Rabbit IgG H&L (HRP) at 1/20000 dilution
 Predicted band size: 45 kDa Observed band size: 28,46 kDa
 Exposure time: 5 seconds



All lanes: Cathepsin D Rabbit mAb at 1/1k dilution
 Lane 1 : Wild-type HeLa cell lysate
 Lane 2 : Cathepsin D knockdown HeLa cell lysate
 Lysates/proteins at 20 µg per lane.



Formalin-fixed, paraffin-embedded human ovarian cancer tissue stained for Cathepsin D using 58732 at 1/100 dilution in immunohistochemical analysis.



Immunocytochemistry/ Immunofluorescence Cathepsin D antibody (58732) ICC/IF staining of Cathepsin D in 293T cells. Cells were fixed with 4% Paraformaldehyde permeabilized with 0.1% Triton X-100.

Samples were incubated with 58732 at a working dilution of 1/100. The secondary antibody was Alexa FluorB 647 goat anti rabbit, used at a dilution of 1/500.

Nuclei were counterstained with DAPI.

Note: This product is for in vitro research use only and is not intended for use in humans or animals.