

Cyclophilin B Rabbit mAb

Catalog No: #58767



Package Size: #58767-1 50ul #58767-2 100ul

Orders: order@signalwayantibody.com

Support: tech@signalwayantibody.com

Description

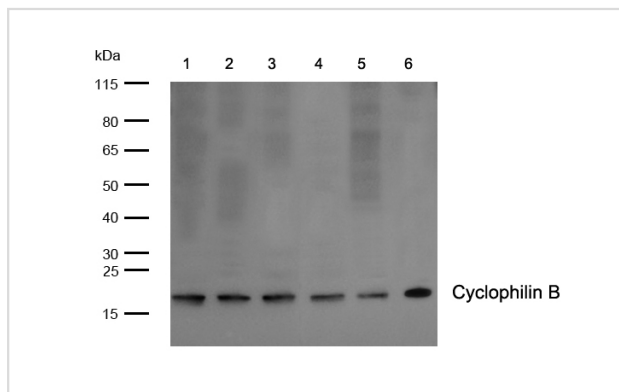
Product Name	Cyclophilin B Rabbit mAb
Host Species	Rabbit
Clonality	Monoclonal
Isotype	Rabbit IgG
Purification	Affinity-chromatography
Applications	WB;IHC
Species Reactivity	Human Mouse Rat
Specificity	Cyclophilin B Antibody detects endogenous levels of total Cyclophilin B
Conjugates	Unconjugated
Other Names	Cphn2; Cyclophilin B; OI9; CYPB; PPIase B; PPIB; SCYLP; Rotamase B;
Accession No.	P23284
Calculated MW	24 kDa
SDS-PAGE MW	18 kDa
Formulation	Rabbit IgG in phosphate buffered saline , pH 7.4, 150mM NaCl, 0.02% sodium azide and 50% glycerol.
Storage	Store at +4°C short term. Store at -20°C long term. Avoid freeze / thaw cycle.

Application Details

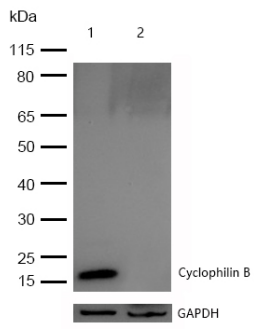
WB: 1:500-1:2000

IHC: 1:50-1:200

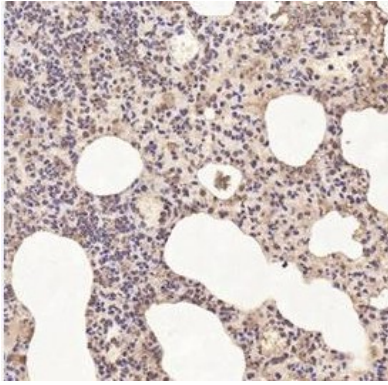
Images



All lanes: Cyclophilin B Rabbit mAb at 1/1k dilution
 Lane 1 : HepG2 whole cell lysates
 Lane 2 : MCF-7 whole cell lysates
 Lane 3 : Mouse liver lysates
 Lane 4 : Mouse spleen lysates
 Lane 5 : Rat liver lysates
 Lane 6 : Rat spleen lysates
 Lysates/proteins at 20 µg per lane.
 Secondary All lanes : Goat Anti-Rabbit IgG H&L (HRP) at 1/20000 dilution
 Predicted band size: 24 kDa
 Observed band size: 18 kDa
 Exposure time: 8 seconds



All lanes :Cyclophilin B Rabbit mAb at 1/1k dilution
Lane 1 : Wild-type HAP1 cell lysate
Lane 2 : Cyclophilin B knockdown HAP1 cell lysate
Lysates/proteins at 20 µg per lane.



Formalin-fixed, paraffin-embedded mouse lung tissue stained for Cyclophilin B using 58767 at 1/100 dilution in immunohistochemical analysis.

Note: This product is for in vitro research use only and is not intended for use in humans or animals.