

Tubulin gamma Rabbit mAb

Catalog No: #58778

Package Size: #58778-1 50ul #58778-2 100ul

Orders: order@signalwayantibody.com

Support: tech@signalwayantibody.com

Description

Product Name	Tubulin gamma Rabbit mAb
Host Species	Rabbit
Clonality	Monoclonal
Isotype	Rabbit IgG
Purification	Affinity-chromatography
Applications	WB;IHC;ICC/IF
Species Reactivity	Human Mouse Rat Monkey Chicken Hamster Cow Dog Fish Xenopus tropicalis
Specificity	Tubulin gamma Antibody detects endogenous levels of total Tubulin gamma
Conjugates	Unconjugated
Other Names	Gamma-1-tubulin; Gamma-tubulin complex component 1; GCP-1; TBG1; TUBG; TUBG1; TUBGCP1; Tubulin gamma-1 chain; tubulin, gamma 1; tubulin, gamma polypeptide,gamma tubulin;
Accession No.	P23258
Calculated MW	51 kDa
SDS-PAGE MW	48 kDa
Formulation	Rabbit IgG in phosphate buffered saline , pH 7.4, 150mM NaCl, 0.02% sodium azide and 50% glycerol.
Storage	Store at +4°C short term. Store at -20°C long term. Avoid freeze / thaw cycle.

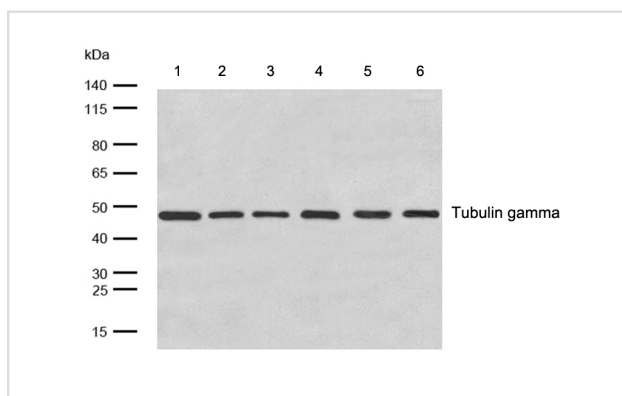
Application Details

WB: 1:500-1:2000

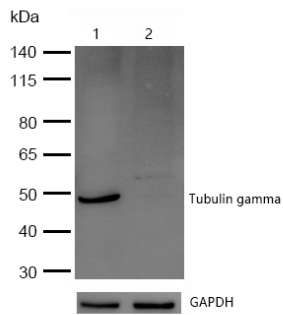
IHC: 1:50-1:200

ICC/IF: 1:50-1:200

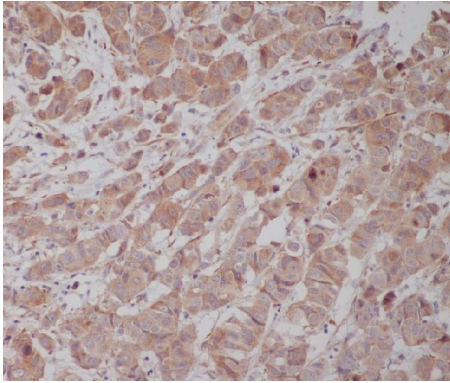
Images



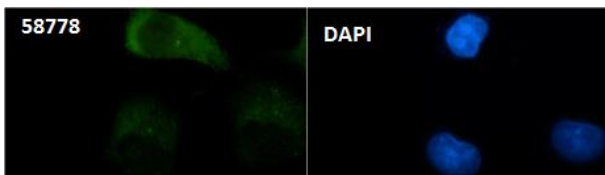
All lanes: Tubulin gamma Rabbit mAb at 1/1k dilution
 Lane 1 : HeLa whole cell lysates
 Lane 2 : 3T3 whole cell lysates
 Lane 3 : C6 whole cell lysates
 Lane 4 : Zebrafish lysates
 Lane 5 : COS-7 whole cell lysates
 Lane 6 : MDCK whole cell lysates
 Lysates/proteins at 20 µg per lane.
 Secondary All lanes : Goat Anti-Rabbit IgG H&L (HRP) at 1/20000 dilution
 Predicted band size: 51 kDa
 Observed band size: 48 kDa
 Exposure time: 3 seconds



All lanes: Tubulin gamma Rabbit mAb at 1/1k dilution
 Lane 1 : Wild-type HeLa cell lysate
 Lane 2 : Tubulin gamma knockdown HeLa cell lysate
 Lysates/proteins at 20 µg per lane.



Formalin-fixed, paraffin-embedded human breast cancer tissue stained for Tubulin gamma using 58778 at 1/100 dilution in immunohistochemical analysis.



Immunocytochemistry/ Immunofluorescence Tubulin gamma antibody (58778) ICC/IF staining of Tubulin gamma in HEPG2 cells. Cells were fixed with 4% Paraformaldehyde permeabilized with 0.1% Triton X-100.

Samples were incubated with 58778 at a working dilution of 1/100. The secondary antibody was Alexa FluorB 488 goat anti rabbit, used at a dilution of 1/500.

Nuclei were counterstained with DAPI.

Note: This product is for in vitro research use only and is not intended for use in humans or animals.