

Alas1 Rabbit mAb

Catalog No: #58840



Package Size: #58840-1 50ul #58840-2 100ul

Orders: order@signalwayantibody.com

Support: tech@signalwayantibody.com

Description

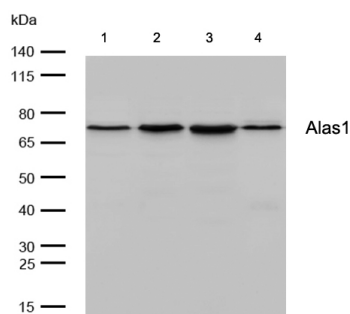
Product Name	Alas1 Rabbit mAb
Host Species	Rabbit
Clonality	Monoclonal
Isotype	Rabbit IgG
Purification	Affinity-chromatography
Applications	WB;ICC/IF
Species Reactivity	Human
Specificity	Alas1 Antibody detects endogenous levels of total Alas1
Conjugates	Unconjugated
Other Names	ALAS1; ALAS-H; 5-aminolevulinic acid synthase 1; Delta-ALA synthase 1; ALAS3; ALASH;
Accession No.	P13196
Calculated MW	71 kDa
SDS-PAGE MW	71 kDa
Formulation	Rabbit IgG in phosphate buffered saline , pH 7.4, 150mM NaCl, 0.02% sodium azide and 50% glycerol.
Storage	Store at +4°C short term. Store at -20°C long term. Avoid freeze / thaw cycle.

Application Details

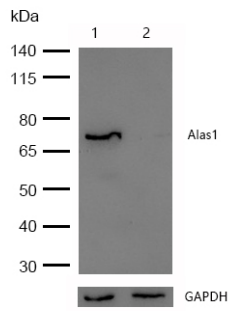
WB: 1:500-1:2000

ICC/IF: 1:50-1:200

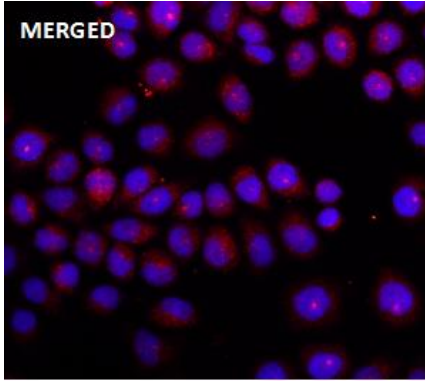
Images



All lanes: Alas1 Rabbit mAb at 1/1k dilution
 Lane 1 : Hela whole cell lysates
 Lane 2 : JK whole cell lysates
 Lane 3 : HepG2 whole cell lysates
 Lane 4 : MCF-7 whole cell lysates
 Lysates/proteins at 20 µg per lane.
 Secondary All lanes : Goat Anti-Rabbit IgG H&L (HRP) at 1/20000 dilution
 Predicted band size: 71 kDa
 Observed band size: 71 kDa
 Exposure time: 7 seconds



All lanes :Alas1 Rabbit mAb at 1/1k dilution
 Lane 1 : Wild-type A549 cell lysate
 Lane 2 : Alas1 knockdown A549 cell lysate
 Lysates/proteins at 20 µg per lane.



Immunocytochemistry/ Immunofluorescence Alas1 antibody (58840) ICC/IF staining of Alas1 in HeLa cells. Cells were fixed with 4% Paraformaldehyde permeabilized with 0.1% Triton X-100.

Samples were incubated with 58840 at a working dilution of 1/100. The secondary antibody was Alexa FluorB 647 goat anti rabbit, used at a dilution of 1/500.

Nuclei were counterstained with DAPI.

Note: This product is for in vitro research use only and is not intended for use in humans or animals.