

DGCR8 Rabbit mAb

Catalog No: #58849



Package Size: #58849-1 50ul #58849-2 100ul

Orders: order@signalwayantibody.com

Support: tech@signalwayantibody.com

Description

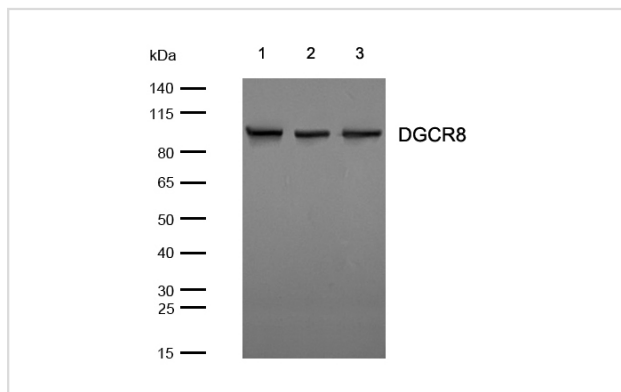
Product Name	DGCR8 Rabbit mAb
Host Species	Rabbit
Clonality	Monoclonal
Isotype	Rabbit IgG
Purification	Affinity-chromatography
Applications	WB;ICC/IF
Species Reactivity	Human Mouse Rat
Specificity	DGCR8 Antibody detects endogenous levels of total DGCR8
Conjugates	Unconjugated
Other Names	DGCR8; DGCRK6; Gy1 ; C22orf12; D16Wis2; pasha;
Accession No.	Q8WYQ5
Calculated MW	86 kDa
SDS-PAGE MW	100 kDa
Formulation	Rabbit IgG in phosphate buffered saline , pH 7.4, 150mM NaCl, 0.02% sodium azide and 50% glycerol.
Storage	Store at +4°C short term. Store at -20°C long term. Avoid freeze / thaw cycle.

Application Details

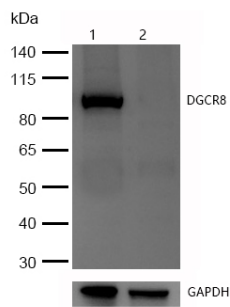
WB: 1:500-1:2000

ICC/IF: 1:50-1:200

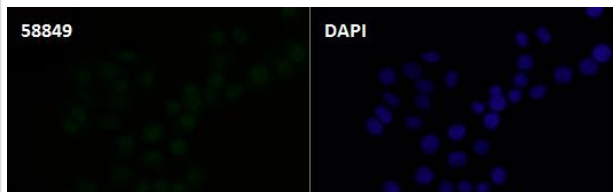
Images



All lanes: DGCR8 Rabbit mAb at 1/1k dilution
 Lane 1 : 293 whole cell lysates
 Lane 2 : K562 whole cell lysates
 Lane 3 : 3T3 whole cell lysates
 Lysates/proteins at 20 µg per lane.
 Secondary All lanes : Goat Anti-Rabbit IgG H&L (HRP) at 1/20000 dilution
 Predicted band size: 86 kDa
 Observed band size: 100 kDa
 Exposure time: 7 seconds



All lanes: DGCR8 Rabbit mAb at 1/1k dilution
 Lane 1 : Wild-type HeLa cell lysate
 Lane 2 : DGCR8 knockdown HeLa cell lysate
 Lysates/proteins at 20 µg per lane.



Immunocytochemistry/ Immunofluorescence DGCR8 antibody (58849)
 ICC/IF staining of DGCR8 in HeLa cells. Cells were fixed with 4% Paraformaldehyde permeabilized with 0.1% Triton X-100.

Samples were incubated with 58849 at a working dilution of 1/100. The secondary antibody was Alexa FluorB 488 goat anti rabbit, used at a dilution of 1/500.

Nuclei

were counterstained with DAPI.

Note: This product is for in vitro research use only and is not intended for use in humans or animals.