

HIF-1 beta Rabbit mAb

Catalog No: #58851



Package Size: #58851-1 50ul #58851-2 100ul

Orders: order@signalwayantibody.comSupport: tech@signalwayantibody.com

Description

Product Name	HIF-1 beta Rabbit mAb
Host Species	Rabbit
Clonality	Monoclonal
Isotype	Rabbit IgG
Purification	Affinity-chromatography
Applications	WB;IHC;ICC/IF
Species Reactivity	Human
Specificity	HIF-1 beta Antibody detects endogenous levels of total HIF-1 beta
Conjugates	Unconjugated
Other Names	ARNT;HIF-1beta;HIF1B;HIF1BETA;TANGO;bHLHe2;
Accession No.	P27540
Calculated MW	87 kDa
SDS-PAGE MW	87 kDa
Formulation	Rabbit IgG in phosphate buffered saline , pH 7.4, 150mM NaCl, 0.02% sodium azide and 50% glycerol.
Storage	Store at +4°C short term. Store at -20°C long term. Avoid freeze / thaw cycle.

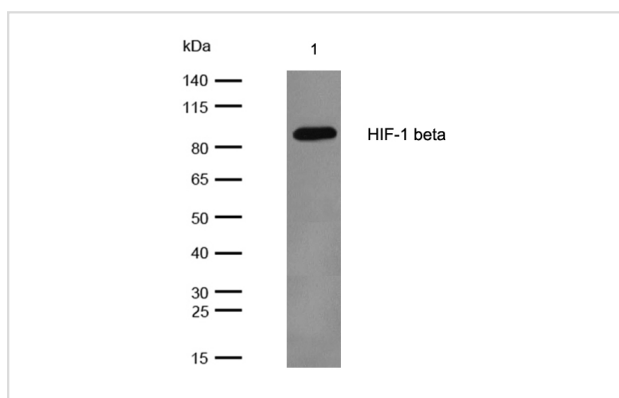
Application Details

WB: 1:500-1:2000

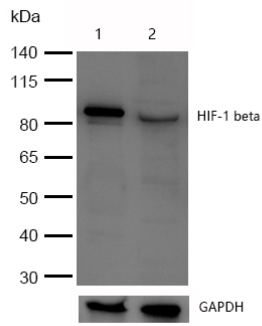
IHC: 1:50-1:200

ICC/IF: 1:50-1:200

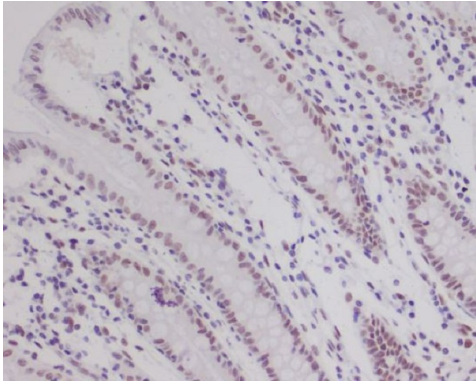
Images



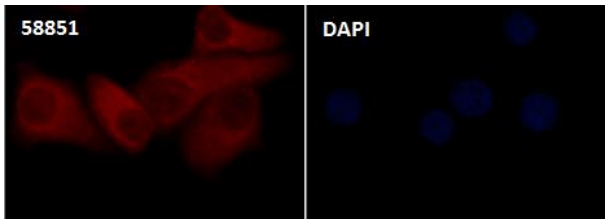
All lanes: HIF-1 beta Rabbit mAb at 1/1k dilution
 Lane 1 : Human fetal kidney lysate Lysates/proteins at 20 µg per lane.
 Secondary All lanes : Goat Anti-Rabbit IgG H&L (HRP) at 1/20000 dilution
 Predicted band size: 87 kDa Observed band size: 87 kDa
 Exposure time: 6 seconds



All lanes :HIF-1 beta Rabbit mAb at 1/1k dilution
 Lane 1 : Wild-type A549 cell lysate
 Lane 2 : HIF-1 beta knockdown A549 cell lysate
 Lysates/proteins at 20 µg per lane.



Formalin-fixed, paraffin-embedded human colon tissue stained for HIF-1 beta using 58851 at 1/100 dilution in immunohistochemical analysis.



Immunocytochemistry/ Immunofluorescence HIF-1 beta antibody (58851) ICC/IF staining of HIF-1 beta in HeLa cells. Cells were fixed with 4% Paraformaldehyde permeabilized with 0.1% Triton X-100.

Samples were incubated with 58851 at a working dilution of 1/100. The secondary antibody was Alexa FluorB 647 goat anti rabbit, used at a dilution of 1/500.

Nuclei were counterstained with DAPI.

Note: This product is for in vitro research use only and is not intended for use in humans or animals.