

ATP citrate lyase Rabbit mAb

Catalog No: #58866

Package Size: #58866-1 50ul #58866-2 100ul

Orders: order@signalwayantibody.com

Support: tech@signalwayantibody.com

Description

Product Name	ATP citrate lyase Rabbit mAb
Host Species	Rabbit
Clonality	Monoclonal
Isotype	Rabbit IgG
Purification	Affinity-chromatography
Applications	WB;IHC;ICC/IF
Species Reactivity	Human Mouse Rat
Specificity	ATP citrate lyase Antibody detects endogenous levels of total ATP citrate
Conjugates	Unconjugated
Other Names	ACL; ATPCL; CLATP; ATP citrate lyase;
Accession No.	P53396
Calculated MW	121 kDa
SDS-PAGE MW	121 kDa
Formulation	Rabbit IgG in phosphate buffered saline , pH 7.4, 150mM NaCl, 0.02% sodium azide and 50% glycerol.
Storage	Store at +4°C short term. Store at -20°C long term. Avoid freeze / thaw cycle.

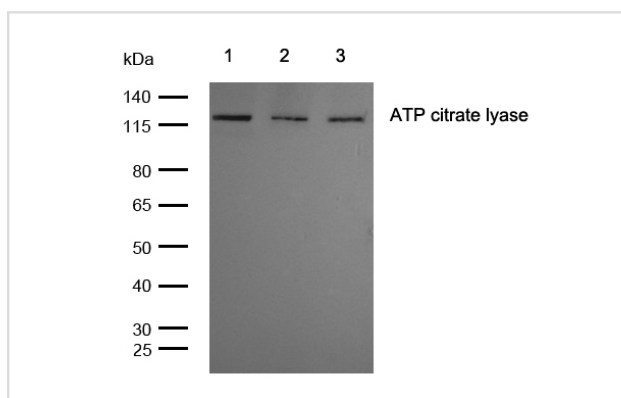
Application Details

WB: 1:500-1:2000

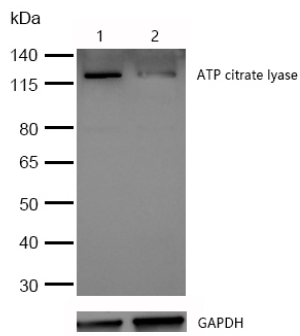
IHC: 1:50-1:200

ICC/IF: 1:50-1:200

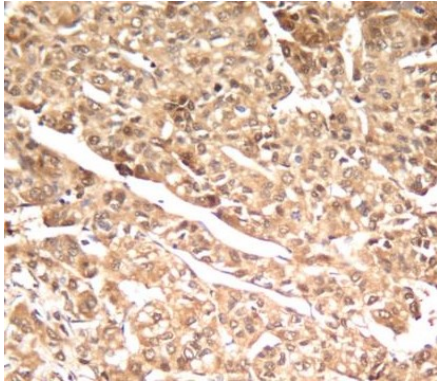
Images



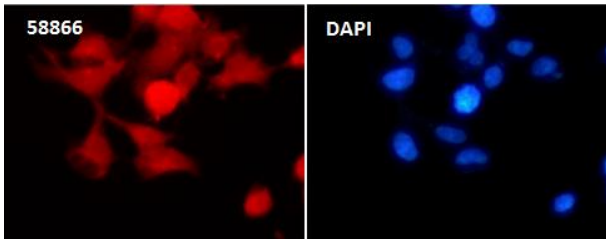
All lanes: ATP citrate lyase Rabbit mAb at 1/1k dilution
 Lane 1 : JK whole cell lysates Lane 2 : 3T3 whole cell lysates Lane 3 : C6 whole cell lysates
 Lysates/proteins at 20 µg per lane. Secondary All lanes : Goat Anti-Rabbit IgG H&L (HRP) at 1/20000 dilution
 Predicted band size: 121 kDa Observed band size: 121 kDa Exposure time: 9 seconds



All lanes: ATP citrate lyase Rabbit mAb at 1/1k dilution
 Lane 1 : Wild-type HeLa cell lysate
 Lane 2 : ATP citrate lyase knockdown HeLa cell lysate
 Lysates/proteins at 20 µg per lane.



Formalin-fixed, paraffin-embedded human hepatocellular carcinoma tissue stained for ATP citrate lyase using 58866 at 1/100 dilution in immunohistochemical analysis.



Immunocytochemistry/ Immunofluorescence ATP citrate lyase antibody (58866) ICC/IF staining of ATP citrate lyase in 293T cells. Cells were fixed with 4% Paraformaldehyde permeabilized with 0.1% Triton X-100.

Samples were incubated with 58866 at a working dilution of 1/100. The secondary antibody was Alexa FluorB 647 goat anti rabbit, used at a dilution of 1/500.

Nuclei were counterstained with DAPI.

Note: This product is for in vitro research use only and is not intended for use in humans or animals.