

DNA-PKcs Rabbit mAb

Catalog No: #58905



Package Size: #58905-1 50ul #58905-2 100ul

Orders: order@signalwayantibody.com

Support: tech@signalwayantibody.com

Description

Product Name	DNA-PKcs Rabbit mAb
Host Species	Rabbit
Clonality	Monoclonal
Isotype	Rabbit IgG
Purification	Affinity-chromatography
Applications	WB;IHC;ICC/IF
Species Reactivity	Human Mouse Rat
Specificity	DNA-PKcs Antibody detects endogenous levels of DNA-PKcs
Conjugates	Unconjugated
Other Names	DNA-PKcs; DNA-dependent protein kinase catalytic subunit; DNPK1; EC 2.7.11.1; P460; PRKD; PRKDC; XRCC7, kinase DNA PK; DNA PKcs;
Accession No.	P78527
Calculated MW	469 kDa
SDS-PAGE MW	469 kDa
Formulation	Rabbit IgG in phosphate buffered saline , pH 7.4, 150mM NaCl, 0.02% sodium azide and 50% glycerol.
Storage	Store at +4°C short term. Store at -20°C long term. Avoid freeze / thaw cycle.

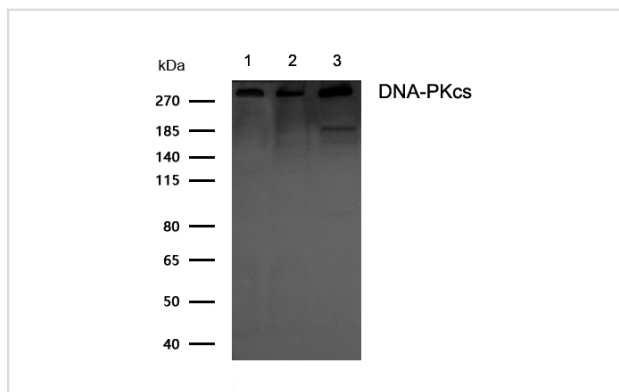
Application Details

WB: 1:500-1:2000

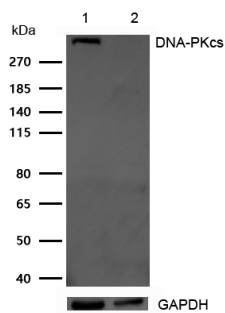
IHC: 1:50-1:200

ICC/IF: 1:50-1:200

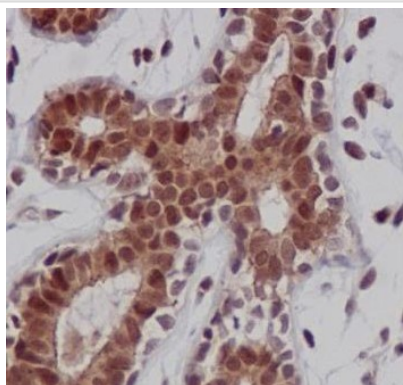
Images



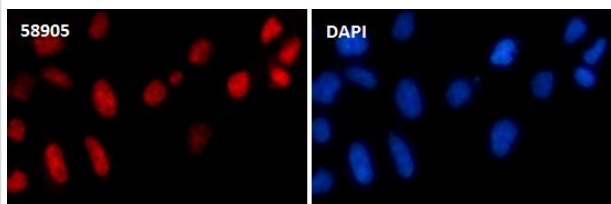
All lanes: DNA-PKcs Rabbit mAb at 1/1k dilution
 Lane 1 : Hela whole cell lysates
 Lane 2 : 3T3 whole cell lysates
 Lane 3 : PC12 whole cell lysates
 Lysates/proteins at 20 µg per lane.
 Secondary All lanes : Goat Anti-Rabbit IgG H&L (HRP) at 1/20000 dilution
 Predicted band size: 469 kDa
 Observed band size: 469 kDa
 Exposure time: 10 seconds



All lanes: DNA-PKcs Rabbit mAb at 1/1k dilution
 Lane 1 : Wild-type HeLa cell lysate
 Lane 2 : DNA-PKcs knockdown HeLa cell lysate
 Lysates/proteins at 20 µg per lane.



Formalin-fixed, paraffin-embedded human breast tissue stained for DNA-PKcs using 58905 at 1/100 dilution in immunohistochemical analysis.



Immunocytochemistry/ Immunofluorescence DNA-PKcs antibody (58905) ICC/IF staining of DNA-PKcs in 293T cells. Cells were fixed with 4% Paraformaldehyde permeabilized with 0.1% Triton X-100.

Samples were incubated with 58905 at a working dilution of 1/100. The secondary antibody was Alexa Fluor 647 goat anti rabbit, used at a dilution of 1/500.

Nuclei were counterstained with DAPI.

Note: This product is for in vitro research use only and is not intended for use in humans or animals.