

Catenin alpha 1 Rabbit mAb

Catalog No: #58929



Package Size: #58929-1 50ul #58929-2 100ul

Orders: order@signalwayantibody.com

Support: tech@signalwayantibody.com

Description

Product Name	Catenin alpha 1 Rabbit mAb
Host Species	Rabbit
Clonality	Monoclonal
Isotype	Rabbit IgG
Purification	Affinity-chromatography
Applications	WB;IHC;ICC/IF
Species Reactivity	Human Mouse Rat
Specificity	Catenin alpha 1 Antibody detects endogenous levels of Catenin alpha 1
Conjugates	Unconjugated
Other Names	102 kDa cadherin-associated protein; Alpha E-catenin; CATNA1; CTN1; Cadherin-associated protein; catenin alpha-1; Catenin alpha 1;
Accession No.	P35221
Calculated MW	100 kDa
SDS-PAGE MW	100 kDa
Formulation	Rabbit IgG in phosphate buffered saline , pH 7.4, 150mM NaCl, 0.02% sodium azide and 50% glycerol.
Storage	Store at +4°C short term. Store at -20°C long term. Avoid freeze / thaw cycle.

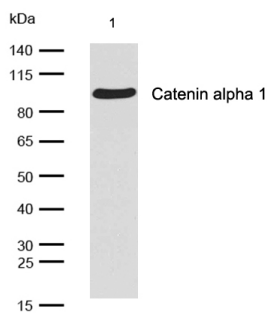
Application Details

WB: 1:500-1:2000

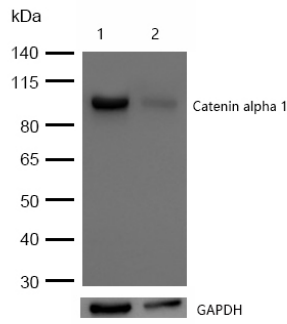
IHC: 1:50-1:200

ICC/IF: 1:50-1:200

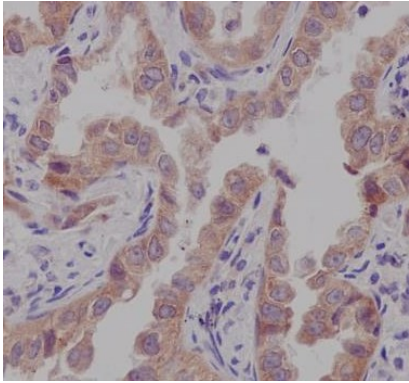
Images



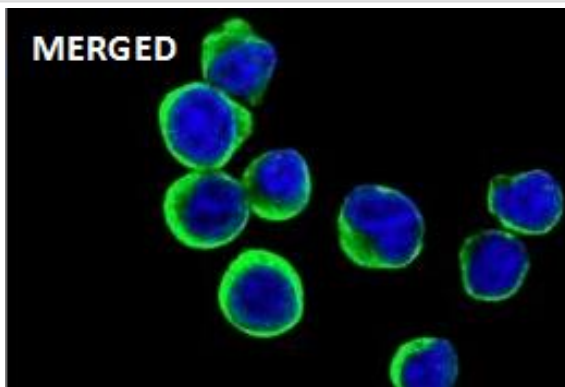
All lanes: Catenin alpha 1 Rabbit mAb at 1/1k dilution
 Lane 1 :
 HeLa whole cell lysates Lysates/proteins at 20 µg per
 lane.SecondaryAll lanes : Goat Anti-Rabbit IgG H&L (HRP) at
 1/20000 dilutionPredicted band size: 100 kDa Observed band
 size: 100 kDaExposure time: 5 seconds



All lanes: Catenin alpha 1 Rabbit mAb at 1/1k dilution
 Lane 1 : Wild-type HeLa cell lysate
 Lane 2 : Catenin alpha 1 knockdown HeLa cell lysate
 Lysates/proteins at 20 µg per lane.



Formalin-fixed, paraffin-embedded human lung cancer tissue stained for Catenin alpha 1 using 58929 at 1/100 dilution in immunohistochemical analysis.



Immunocytochemistry/ Immunofluorescence Catenin alpha 1 antibody (58929) ICC/IF staining of Catenin alpha 1 in A431 cells. Cells were fixed with 4% Paraformaldehyde permeabilized with 0.1% Triton X-100.

Samples were incubated with 58929 at a working dilution of 1/100. The secondary antibody was Alexa FluorB 488 goat anti rabbit, used at a dilution of 1/500.

Nuclei were counterstained with DAPI.

Note: This product is for in vitro research use only and is not intended for use in humans or animals.