

IKK alpha Rabbit mAb

Catalog No: #59000



Package Size: #59000-1 50ul #59000-2 100ul

Orders: order@signalwayantibody.com

Support: tech@signalwayantibody.com

Description

| | |
|--------------------|--|
| Product Name | IKK alpha Rabbit mAb |
| Host Species | Rabbit |
| Clonality | Monoclonal |
| Isotype | Rabbit IgG |
| Purification | Affinity-chromatography |
| Applications | WB;IHC;ICC/IF |
| Species Reactivity | Human Mouse Rat |
| Specificity | IKK alpha Antibody detects endogenous levels of IKK alpha |
| Conjugates | Unconjugated |
| Other Names | CHUK; I-kappa-B kinase 1; I-kappa-B kinase alpha; I-kappa-B kinase-alpha; IkappaB kinase; Ikb kinase alpha subunit; IkbKA; IKK-A; IKK-a kinase; IKK-alpha; IKK1; IKKA; |
| Accession No. | O15111 |
| Calculated MW | 85 kDa |
| SDS-PAGE MW | 85 kDa |
| Formulation | Rabbit IgG in phosphate buffered saline , pH 7.4, 150mM NaCl, 0.02% sodium azide and 50% glycerol. |
| Storage | Store at +4°C short term. Store at -20°C long term. Avoid freeze / thaw cycle. |

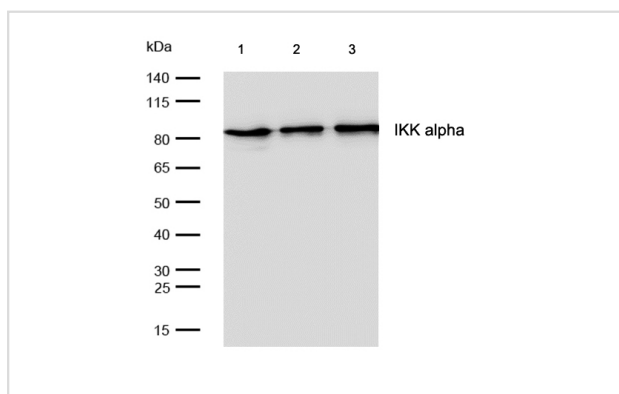
Application Details

WB: 1:500-1:2000

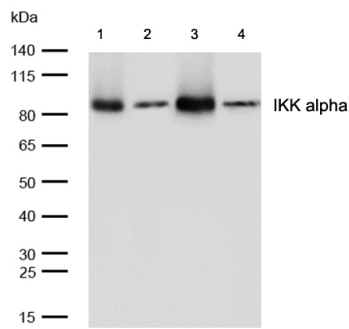
IHC: 1:50-1:200

ICC/IF: 1:50-1:200

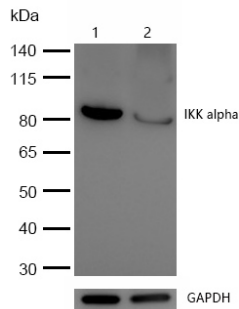
Images



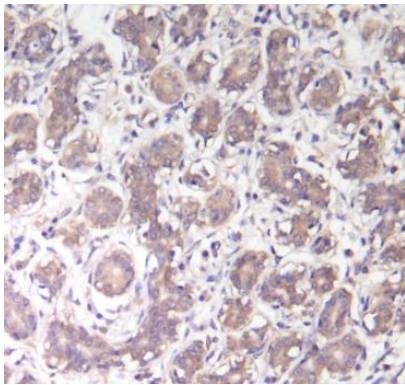
All lanes: IKK alpha Rabbit mAb at 1/1k dilution
 Lane 1 : Hela whole cell lysates
 Lane 2 : 293 whole cell lysates
 Lane 3 : A375 whole cell lysates
 Lysates/proteins at 20 µg per lane.
 Secondary All lanes : Goat Anti-Rabbit IgG H&L (HRP) at 1/20000 dilution
 Predicted band size: 85 kDa
 Observed band size: 85 kDa
 Exposure time: 6 seconds



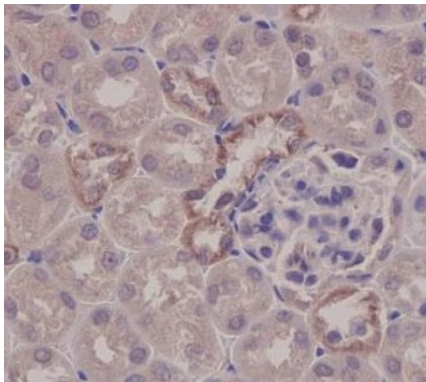
All lanes: IKK alpha Rabbit mAb at 1/1k dilution
 Lane 1 : Mouse lung lysates
 Lane 2 : Mouse brain lysates
 Lane 3 : Rat lung lysates
 Lane 4 : Rat heart lysates
 Lysates/proteins at 20 µg per lane.
 Secondary All lanes : Goat Anti-Rabbit IgG H&L (HRP) at 1/20000 dilution
 Predicted band size: 85 kDa
 Observed band size: 85 kDa
 Exposure time: 8 seconds



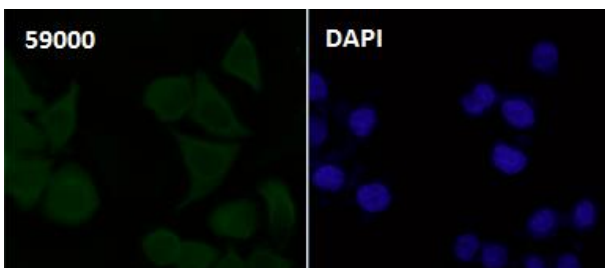
All lanes: IKK Rabbit mAb at 1/1k dilution
 Lane 1 : Wild-type HeLa cell lysate
 Lane 2 : IKK knockdown HeLa cell lysate
 Lysates/proteins at 20 µg per lane.



Formalin-fixed, paraffin-embedded human breast cancer tissue stained for IKK alpha using 59000 at 1/100 dilution in immunohistochemical analysis.



Formalin-fixed, paraffin-embedded mouse kidney tissue stained for IKK alpha using 59000 at 1/100 dilution in immunohistochemical analysis.



Immunocytochemistry/ Immunofluorescence IKK alpha antibody (59000) ICC/IF staining of IKK alpha in HeLa cells. Cells were fixed with 4% Paraformaldehyde permeabilized with 0.1% Triton X-100.

Samples were incubated with 59000 at a working dilution of 1/100. The secondary antibody was Alexa FluorB 488 goat anti rabbit, used at a dilution of 1/500.

Nuclei were counterstained with DAPI.

Note: This product is for in vitro research use only and is not intended for use in humans or animals.