

## SHP2 Rabbit mAb

Catalog No: #59015



Package Size: #59015-1 50ul #59015-2 100ul

Orders: order@signalwayantibody.com

Support: tech@signalwayantibody.com

## Description

Product Name	SHP2 Rabbit mAb
Host Species	Rabbit
Clonality	Monoclonal
Isotype	Rabbit IgG
Purification	Affinity-chromatography
Applications	WB;IHC;ICC/IF
Species Reactivity	Human Mouse Rat
Specificity	SHP2 Antibody detects endogenous levels of SHP2
Conjugates	Unconjugated
Other Names	CFC; NS1; SHP2; BPTP3; SH-PTP2; SH-PTP3; Tyrosine-protein phosphatase non-receptor type 11; PTP-1D; PTP2C; Protein-tyrosine phosphatase 1D;
Accession No.	Q06124
Calculated MW	68 kDa
SDS-PAGE MW	68 kDa
Formulation	Rabbit IgG in phosphate buffered saline , pH 7.4, 150mM NaCl, 0.02% sodium azide and 50% glycerol.
Storage	Store at +4°C short term. Store at -20°C long term. Avoid freeze / thaw cycle.

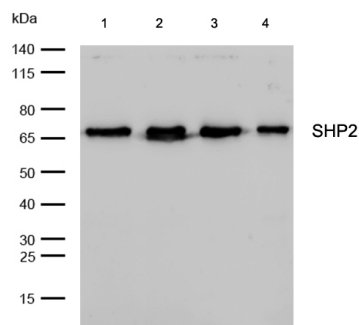
## Application Details

WB: 1:500-1:2000

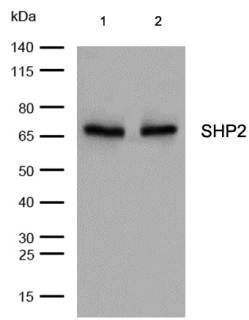
IHC: 1:50-1:200

ICC/IF: 1:50-1:200

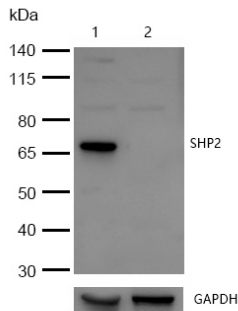
## Images



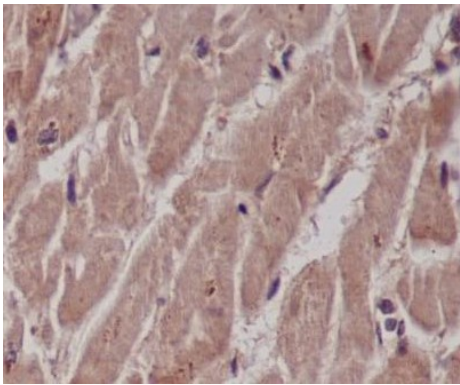
All lanes: SHP2 Rabbit mAb at 1/1k dilution  
 Lane 1 : JK whole cell lysates  
 Lane 2 : HepG2 whole cell lysates  
 Lane 3 : MCF-7 whole cell lysates  
 Lane 4 : SH-SY5Y whole cell lysates  
 Lysates/proteins at 20 µg per lane.  
 Secondary All lanes : Goat Anti-Rabbit IgG H&L (HRP) at 1/20000 dilution  
 Predicted band size: 68 kDa  
 Observed band size: 68 kDa  
 Exposure time: 5 seconds



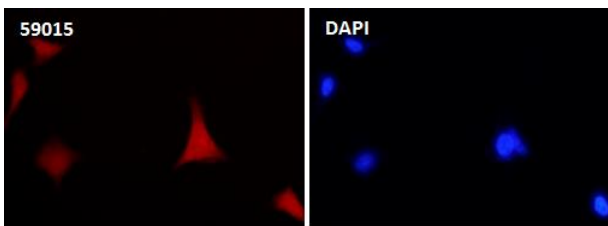
All lanes: SHP2 Rabbit mAb at 1/1k dilution  
 Lane 1 : Mouse brain lysates  
 Lane 2 : Rat brain lysates  
 Lysates/proteins at 20 µg per lane.  
 Secondary All lanes : Goat Anti-Rabbit IgG H&L (HRP) at 1/20000 dilution  
 Predicted band size: 68 kDa  
 Observed band size: 68 kDa  
 Exposure time: 6 seconds



All lanes: SHP2 Rabbit mAb at 1/1k dilution  
 Lane 1 : Wild-type HeLa cell lysate  
 Lane 2 : SHP2 knockdown HeLa cell lysate  
 Lysates/proteins at 20 µg per lane.



Formalin-fixed, paraffin-embedded human heart tissue stained for SHP2 using 59015 at 1/100 dilution in immunohistochemical analysis.



Immunocytochemistry/ Immunofluorescence SHP2 antibody (59015)  
 ICC/IF staining of SHP2 in 293T cells. Cells were fixed with 4% Paraformaldehyde permeabilized with 0.1% Triton X-100.

Samples were incubated with 59015 at a working dilution of 1/100. The secondary antibody was Alexa FluorB 647 goat anti rabbit, used at a dilution of 1/500.

Nuclei were counterstained with DAPI.

Note: This product is for in vitro research use only and is not intended for use in humans or animals.