

## Bcl10 Rabbit mAb

Catalog No: #59034



Package Size: #59034-1 50ul #59034-2 100ul

Orders: order@signalwayantibody.com

Support: tech@signalwayantibody.com

## Description

Product Name	Bcl10 Rabbit mAb
Host Species	Rabbit
Clonality	Monoclonal
Isotype	Rabbit IgG
Purification	Affinity-chromatography
Applications	WB;IHC;ICC/IF
Species Reactivity	Human
Specificity	Bcl10 Antibody detects endogenous levels of Bcl10
Conjugates	Unconjugated
Other Names	B cell CLL/lymphoma 10; B-cell leukemia/lymphoma 10; Bcl10; CARD containing molecule enhancing NF kappa B; CARD like apoptotic protein; Caspase recruiting domain containing protein; cE10; Cellular E10; CIPER; hCLAP; Mammalian CARD-containing adapter molecule E10; R-RCD1;
Accession No.	O95999
Calculated MW	26 kDa
SDS-PAGE MW	31 kDa
Formulation	Rabbit IgG in phosphate buffered saline , pH 7.4, 150mM NaCl, 0.02% sodium azide and 50% glycerol.
Storage	Store at +4°C short term. Store at -20°C long term. Avoid freeze / thaw cycle.

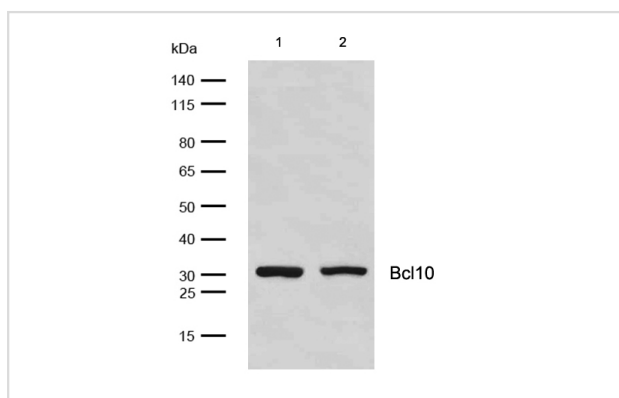
## Application Details

WB: 1:500-1:2000

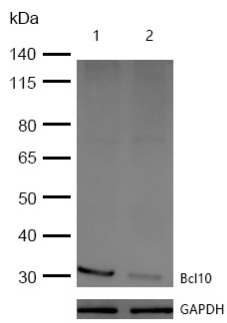
IHC: 1:50-1:200

ICC/IF: 1:50-1:200

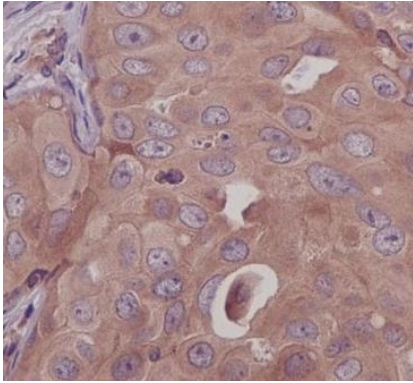
## Images



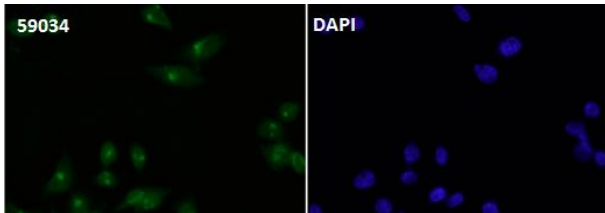
All lanes: Bcl10 Rabbit mAb at 1/1k dilution  
 Lane 1 : Hela whole cell lysates  
 Lane 2 : Raji whole cell lysates  
 Lysates/proteins at 20 µg per lane. Secondary All lanes : Goat Anti-Rabbit IgG H&L (HRP) at 1/20000 dilution  
 Predicted band size: 26 kDa Observed band size: 31 kDa  
 Exposure time: 4 seconds



All lanes: Bcl10 Rabbit mAb at 1/1k dilution  
 Lane 1 : Wild-type HeLa cell lysate  
 Lane 2 : Bcl10 knockdown HeLa cell lysate  
 Lysates/proteins at 20 µg per lane.



Formalin-fixed, paraffin-embedded human breast cancer tissue stained for Bcl10 using 59034 at 1/100 dilution in immunohistochemical analysis.



Immunocytochemistry/ Immunofluorescence Bcl10 antibody (59034) ICC/IF staining of Bcl10 in HeLa cells. Cells were fixed with 4% Paraformaldehyde permeabilized with 0.1% Triton X-100.

Samples were incubated with 59034 at a working dilution of 1/100. The secondary antibody was Alexa Fluor 488 goat anti rabbit, used at a dilution of 1/500.

Nuclei were counterstained with DAPI.

Note: This product is for in vitro research use only and is not intended for use in humans or animals.