

CD36 Rabbit mAb

Catalog No: #59054



Package Size: #59054-1 50ul #59054-2 100ul

Orders: order@signalwayantibody.com

Support: tech@signalwayantibody.com

Description

Product Name	CD36 Rabbit mAb
Host Species	Rabbit
Clonality	Monoclonal
Isotype	Rabbit IgG
Purification	Affinity-chromatography
Applications	WB;IHC;ICC/IF
Species Reactivity	Human Mouse Rat
Specificity	CD36 Antibody detects endogenous levels of CD36
Conjugates	Unconjugated
Other Names	Adipocyte membrane protein; CD36; CD36; CD36 antigen (collagen type I receptor, thrombospondin receptor); CD36 antigen; CD36 molecule (thrombospondin receptor); CD36 molecule; CD36_HUMAN; CHDS7; Cluster determinant 36; Collagen receptor;
Accession No.	P16671
Calculated MW	53 kDa
SDS-PAGE MW	70-120 kDa
Formulation	Rabbit IgG in phosphate buffered saline , pH 7.4, 150mM NaCl, 0.02% sodium azide and 50% glycerol.
Storage	Store at +4°C short term. Store at -20°C long term. Avoid freeze / thaw cycle.

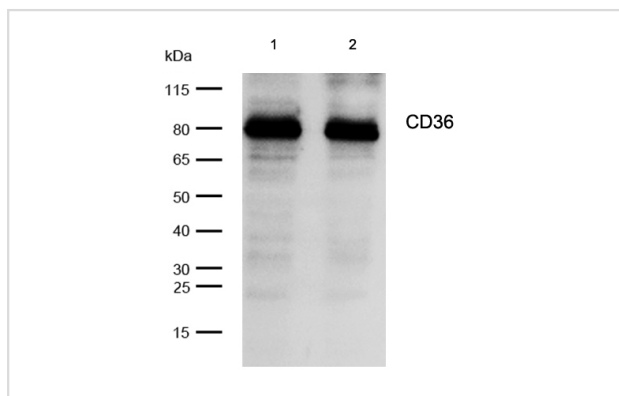
Application Details

WB: 1:500-1:2000

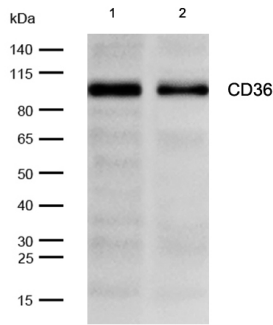
IHC: 1:50-1:200

ICC/IF: 1:50-1:200

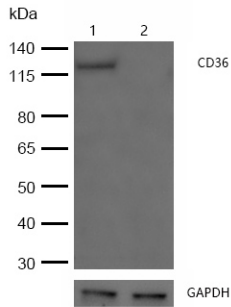
Images



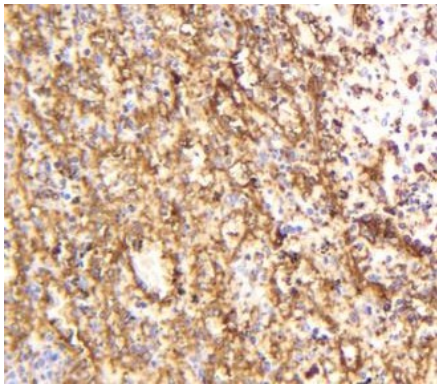
All lanes: CD36 Rabbit mAb at 1/1k dilution
 Lane 1 : Raji whole cell lysates
 Lane 2 : Daudi whole cell lysates
 Lysates/proteins at 20 µg per lane.
 Secondary All lanes : Goat Anti-Rabbit IgG H&L (HRP) at 1/20000 dilution
 Predicted band size: 53 kDa
 Observed band size: 70-120 kDa
 Exposure time: 4 seconds



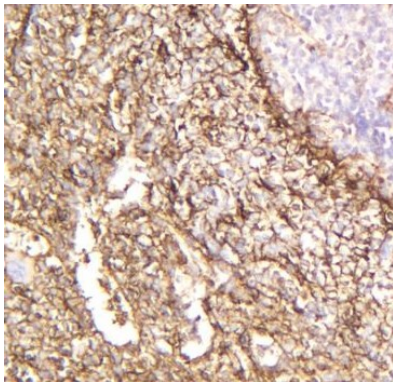
All lanes: CD36 Rabbit mAb at 1/1k dilution
 Lane 1 : Mouse brain lysates
 Lane 2 : Rat brain lysates
 Lysates/proteins at 20 µg per lane.
 Secondary All lanes : Goat Anti-Rabbit IgG H&L (HRP) at 1/20000 dilution
 Predicted band size: 53 kDa
 Observed band size: 70-120 kDa
 Exposure time: 6 seconds



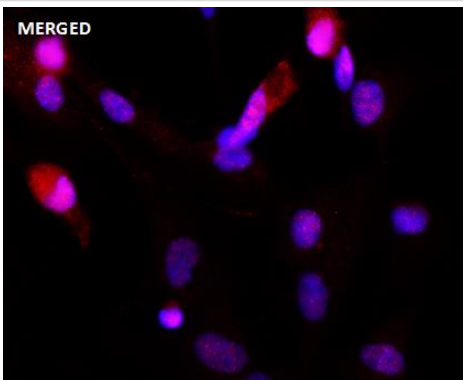
All lanes: CD36 Rabbit mAb at 1/1k dilution
 Lane 1 : Wild-type HeLa cell lysate
 Lane 2 : CD36 knockdown HeLa cell lysate
 Lysates/proteins at 20 µg per lane.



Formalin-fixed, paraffin-embedded human spleen tissue stained for CD36 using 59054 at 1/100 dilution in immunohistochemical analysis.



Formalin-fixed, paraffin-embedded rat spleen tissue stained for CD36 using 59054 at 1/100 dilution in immunohistochemical analysis.



Immunocytochemistry/ Immunofluorescence CD36 antibody (59054)
 ICC/IF staining of CD36 in SH-SY5Y cells. Cells were fixed with 4% Paraformaldehyde permeabilized with 0.1% Triton X-100.

Samples were incubated with 59054 at a working dilution of 1/100. The secondary antibody was Alexa FluorB 647 goat anti rabbit, used at a dilution of 1/500.

Nuclei were counterstained with DAPI.

Note: This product is for in vitro research use only and is not intended for use in humans or animals.