

## Insulin Receptor Rabbit mAb

Catalog No: #59060



Package Size: #59060-1 50ul #59060-2 100ul

Orders: [order@signalwayantibody.com](mailto:order@signalwayantibody.com)Support: [tech@signalwayantibody.com](mailto:tech@signalwayantibody.com)

## Description

Product Name	Insulin Receptor Rabbit mAb
Host Species	Rabbit
Clonality	Monoclonal
Isotype	Rabbit IgG
Purification	Affinity-chromatography
Applications	WB;IHC;ICC/IF
Species Reactivity	Human Mouse Rat
Specificity	Insulin Receptor Antibody detects endogenous levels of Insulin Receptor
Conjugates	Unconjugated
Other Names	CD220; HHF5; human insulin receptor; Insr; Insulin receptor subunit beta; IR 1; IR;
Accession No.	P06213
Calculated MW	156 kDa
SDS-PAGE MW	95 kDa
Formulation	Rabbit IgG in phosphate buffered saline , pH 7.4, 150mM NaCl, 0.02% sodium azide and 50% glycerol.
Storage	Store at +4°C short term. Store at -20°C long term. Avoid freeze / thaw cycle.

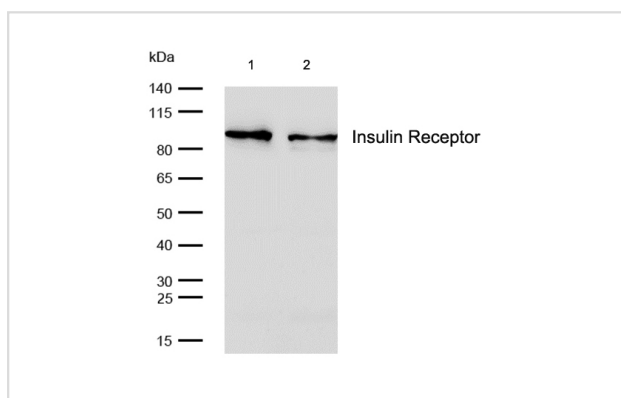
## Application Details

WB: 1:500-1:2000

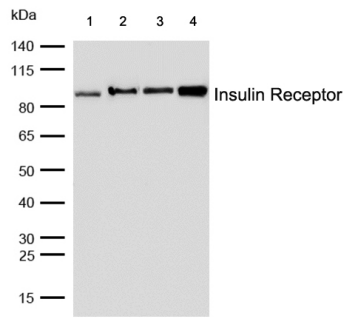
IHC: 1:50-1:200

ICC/IF: 1:50-1:200

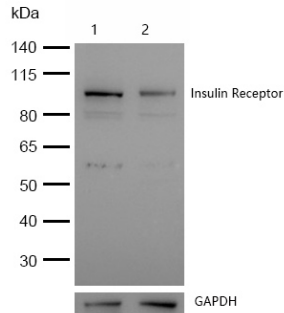
## Images



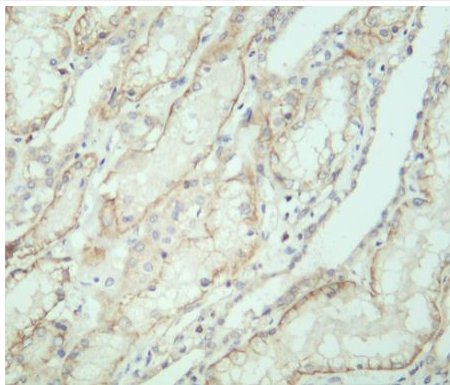
All lanes: Insulin Receptor Rabbit mAb at 1/1k dilution  
 Lane 1 : HepG2 whole cell lysates  
 Lane 2 : MCF-7 whole cell lysates  
 Lysates/proteins at 20 µg per lane.  
 Secondary All lanes : Goat Anti-Rabbit IgG H&L (HRP) at 1/20000 dilution  
 Predicted band size: 156 kDa  
 Observed band size: 95 kDa  
 Exposure time: 4 seconds



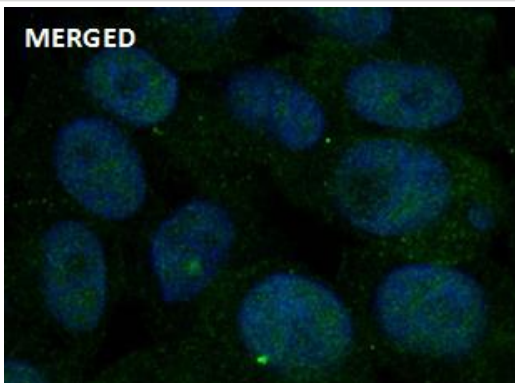
All lanes: Insulin Receptor Rabbit mAb at 1/1k dilution  
 Lane 1 : Mouse liver lysates  
 Lane 2 : Mouse spleen lysates  
 Lane 3 : Rat liver lysates  
 Lane 4 : Rat spleen lysates  
 Lysates/proteins at 20 µg per lane.  
 Secondary All lanes : Goat Anti-Rabbit IgG H&L (HRP) at 1/20000 dilution  
 Predicted band size: 156 kDa  
 Observed band size: 95 kDa  
 Exposure time: 6 seconds



All lanes: Insulin Receptor Rabbit mAb at 1/1k dilution  
 Lane 1 : Wild-type HCT116 cell lysate  
 Lane 2 : Insulin Receptor knockdown HCT116 cell lysate  
 Lysates/proteins at 20 µg per lane.



Formalin-fixed, paraffin-embedded human kidney tissue stained for Insulin Receptor using 59060 at 1/100 dilution in immunohistochemical analysis.



Immunocytochemistry/ Immunofluorescence Insulin Receptor antibody (59060) ICC/IF staining of Insulin Receptor in BxPC-3 cells. Cells were fixed with 4% Paraformaldehyde permeabilized with 0.1% Triton X-100.

Samples were incubated with 59060 at a working dilution of 1/100. The secondary antibody was Alexa FluorB 488 goat anti rabbit, used at a dilution of 1/500.

Nuclei were counterstained with DAPI.

Note: This product is for in vitro research use only and is not intended for use in humans or animals.