

14-3-3 gamma Rabbit mAb

Catalog No: #59100



Package Size: #59100-1 50ul #59100-2 100ul

Orders: order@signalwayantibody.com

Support: tech@signalwayantibody.com

Description

Product Name	14-3-3 gamma Rabbit mAb
Host Species	Rabbit
Clonality	Monoclonal
Isotype	Rabbit IgG
Purification	Affinity-chromatography
Applications	WB;IHC;ICC/IF
Species Reactivity	Human Mouse Rat
Specificity	14-3-3 gamma Antibody detects endogenous levels of 14-3-3 gamma
Conjugates	Unconjugated
Other Names	1433G, 143G, KCIP-1, Protein kinase C inhibitor protein-1, YWHAG; gamma polypeptide;
Accession No.	P61981
Calculated MW	28 kDa
SDS-PAGE MW	28 kDa
Formulation	Rabbit IgG in phosphate buffered saline , pH 7.4, 150mM NaCl, 0.02% sodium azide and 50% glycerol.
Storage	Store at +4°C short term. Store at -20°C long term. Avoid freeze / thaw cycle.

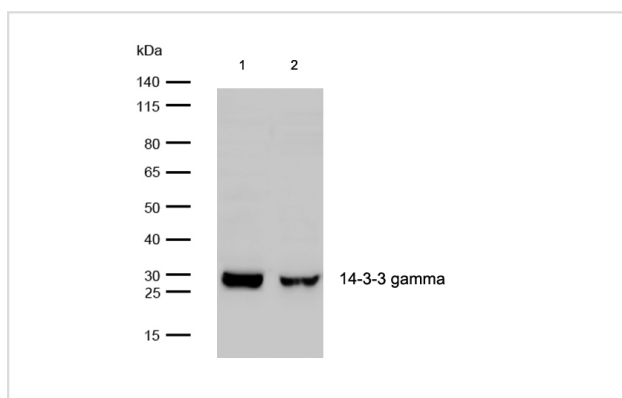
Application Details

WB: 1:500-1:2000

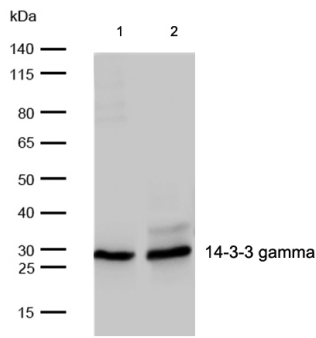
IHC: 1:50-1:200

ICC/IF: 1:50-1:200

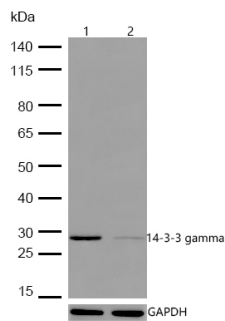
Images



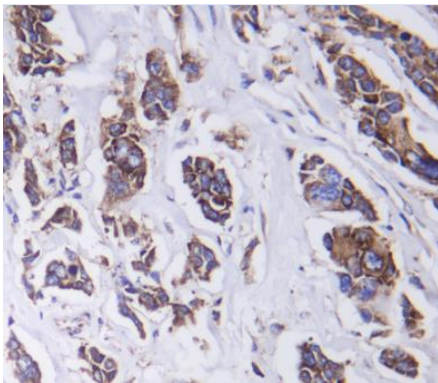
All lanes: 14-3-3 gamma Rabbit mAb at 1/1k dilution
 Lane 1 : A549 whole cell lysates
 Lane 2 : HUVEC whole cell lysates
 Lysates/proteins at 20 µg per lane.
 Secondary All lanes : Goat Anti-Rabbit IgG H&L (HRP) at 1/20000 dilution
 Predicted band size: 28 kDa
 Observed band size: 28 kDa
 Exposure time: 3 seconds



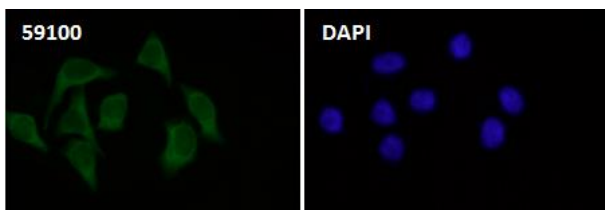
All lanes: 14-3-3 gamma Rabbit mAb at 1/1k dilution
 Lane 1 : Mouse skeletal muscle lysates
 Lane 2 : Rat skeletal muscle lysates
 Lysates/proteins at 20 µg per lane.
 Secondary All lanes : Goat Anti-Rabbit IgG H&L (HRP) at 1/20000 dilution
 Predicted band size: 28 kDa
 Observed band size: 28 kDa
 Exposure time: 6 seconds



All lanes: 14-3-3 gamma Rabbit mAb at 1/1k dilution
 Lane 1 : Wild-type HAP1 cell lysate
 Lane 2 : 14-3-3 gamma Rabbit mAb knockdown HAP1 cell lysate
 Lysates/proteins at 20 µg per lane.



Formalin-fixed, paraffin-embedded human breast cancer tissue stained for 14-3-3 gamma using 59100 at 1/100 dilution in immunohistochemical analysis.



Immunocytochemistry/ Immunofluorescence 14-3-3 gamma antibody (59100) ICC/IF staining of 14-3-3 gamma in HeLa cells. Cells were fixed with 4% Paraformaldehyde permeabilized with 0.1% Triton X-100.

Samples were incubated with 59100 at a working dilution of 1/100. The secondary antibody was Alexa FluorB 488 goat anti rabbit, used at a dilution of 1/500.

Nuclei were counterstained with DAPI.

Note: This product is for in vitro research use only and is not intended for use in humans or animals.