

## ARID1A Rabbit mAb

Catalog No: #59196



Package Size: #59196-1 50ul #59196-2 100ul

Orders: order@signalwayantibody.com

Support: tech@signalwayantibody.com

## Description

Product Name	ARID1A Rabbit mAb
Host Species	Rabbit
Clonality	Monoclonal
Isotype	Rabbit IgG
Purification	Affinity-chromatography
Applications	WB;IHC;ICC/IF
Species Reactivity	Human Mouse Rat
Specificity	ARID1A Antibody detects endogenous levels of total ARID1A
Conjugates	Unconjugated
Other Names	ARID1A; BAF250; C1orf4; ELD; HOSA1; Osa homolog 1; OSA1 nuclear protein; SMARCF1; MRD14; p270; B120; BM029;
Accession No.	O14497
Calculated MW	242 kDa
SDS-PAGE MW	242 kDa
Formulation	Rabbit IgG in phosphate buffered saline , pH 7.4, 150mM NaCl, 0.02% sodium azide and 50% glycerol.
Storage	Store at +4°C short term. Store at -20°C long term. Avoid freeze / thaw cycle.

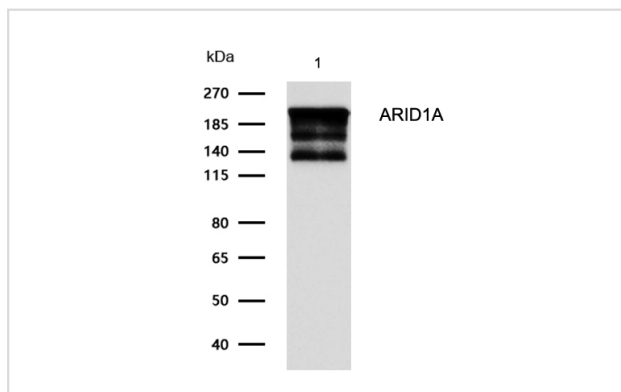
## Application Details

WB: 1:500-1:2000

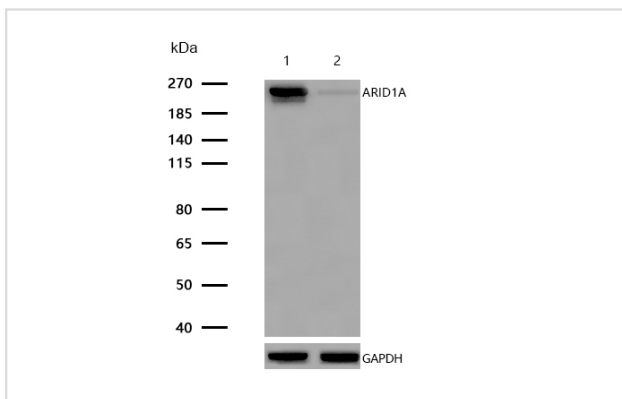
IHC: 1:50-1:200

ICC/IF: 1:50-1:200

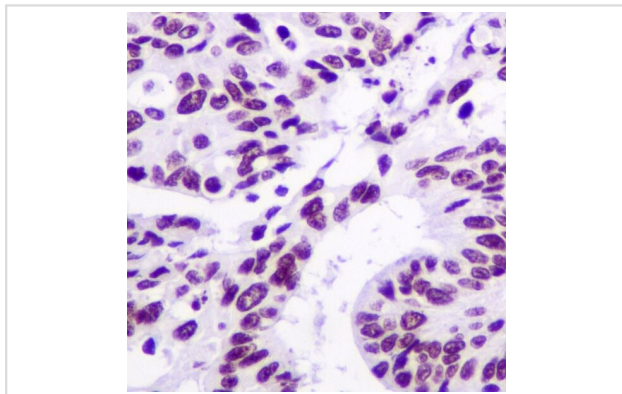
## Images



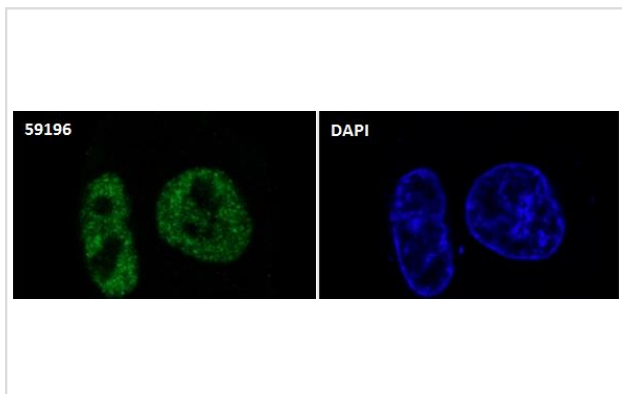
All lanes: ARID1A Rabbit mAb at 1/1k dilution  
 Lane 1 : A375 whole cell lysates Lysates/proteins at 20 µg per lane.  
 Secondary All lanes : Goat Anti-Rabbit IgG H&L (HRP) at 1/20000 dilution  
 Predicted band size: 242 kDa  
 Observed band size: 242 kDa  
 Exposure time: 9 seconds



All lanes: ARID1A Rabbit mAb at 1/1k dilution  
 Lane 1 : Wild-type HeLa cell lysate  
 Lane 2 : ARID1A Rabbit mAb knockdown HeLa cell lysate  
 Lysates/proteins at 20 µg per lane.



Formalin-fixed, paraffin-embedded human colon cancer tissue stained for ARID1A using 59196 at 1/100 dilution in immunohistochemical analysis.



Immunocytochemistry/ Immunofluorescence ARID1A antibody (59196) ICC/IF staining of ARID1A in SH-SY5Y cells. Cells were fixed with 4% Paraformaldehyde permeabilized with 0.1% Triton X-100.

Samples were incubated with 59196 at a working dilution of 1/100. The secondary antibody was Alexa FluorB 488 goat anti rabbit, used at a dilution of 1/500.

Nuclei were counterstained with DAPI.

Note: This product is for in vitro research use only and is not intended for use in humans or animals.